

Prince George's County Public Schools

Blueprint Schools Program **Construction Site Logistics Town Hall**

# HYATTSVILLE MIDDLE SCHOOL

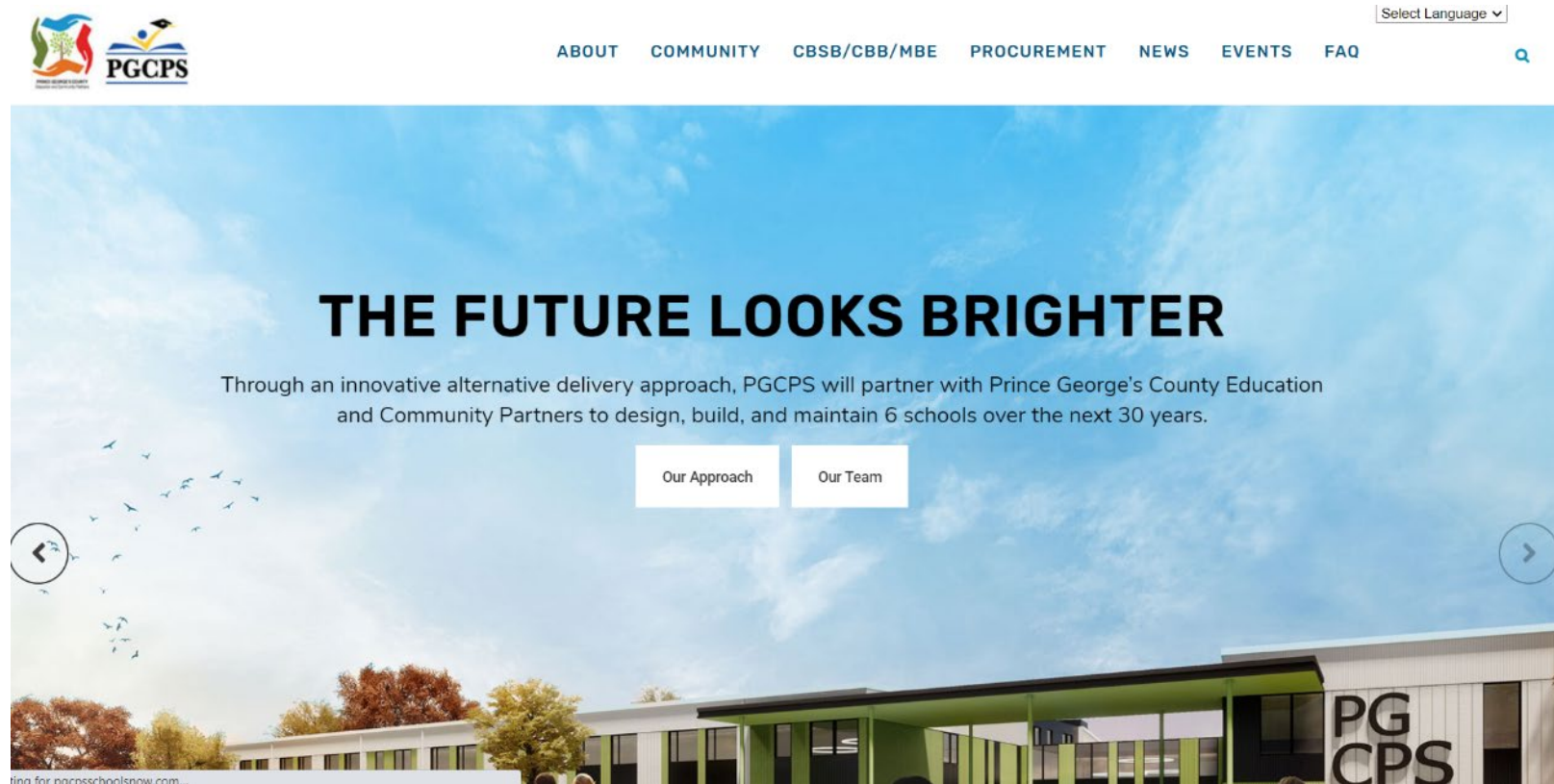
January 12, 2021



PRINCE GEORGE'S COUNTY  
EDUCATION & COMMUNITY PARTNERS



This presentation is being **interpreted LIVE** in **Spanish at (609) 663-4089**. The PowerPoint will be available in Spanish and French on the program website [www.PGCPSBlueprintschools.com](http://www.PGCPSBlueprintschools.com).

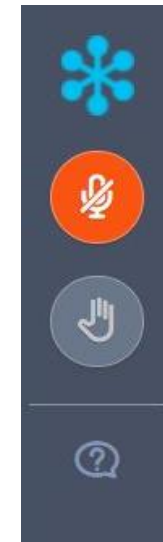




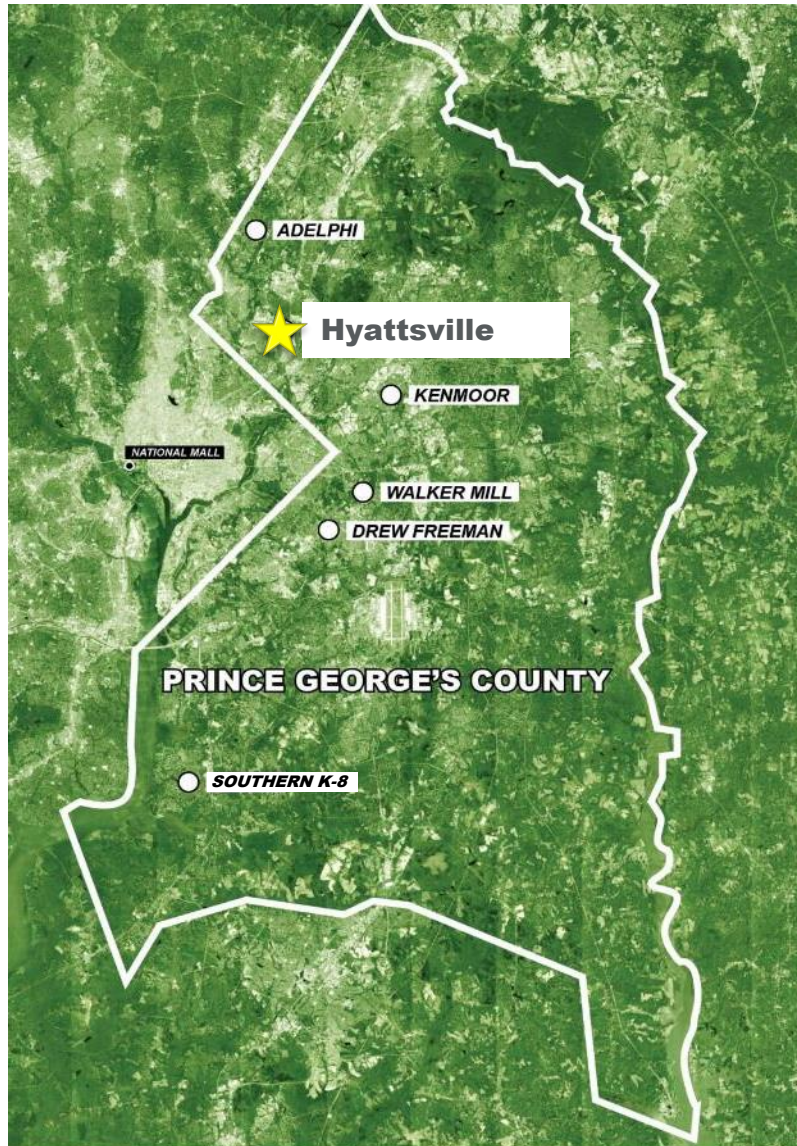
## How to Submit a Question or Comment

At any time during this town hall please submit questions and comments through the **Question function** in your toolbar. Our panelists are able to view what you submit.

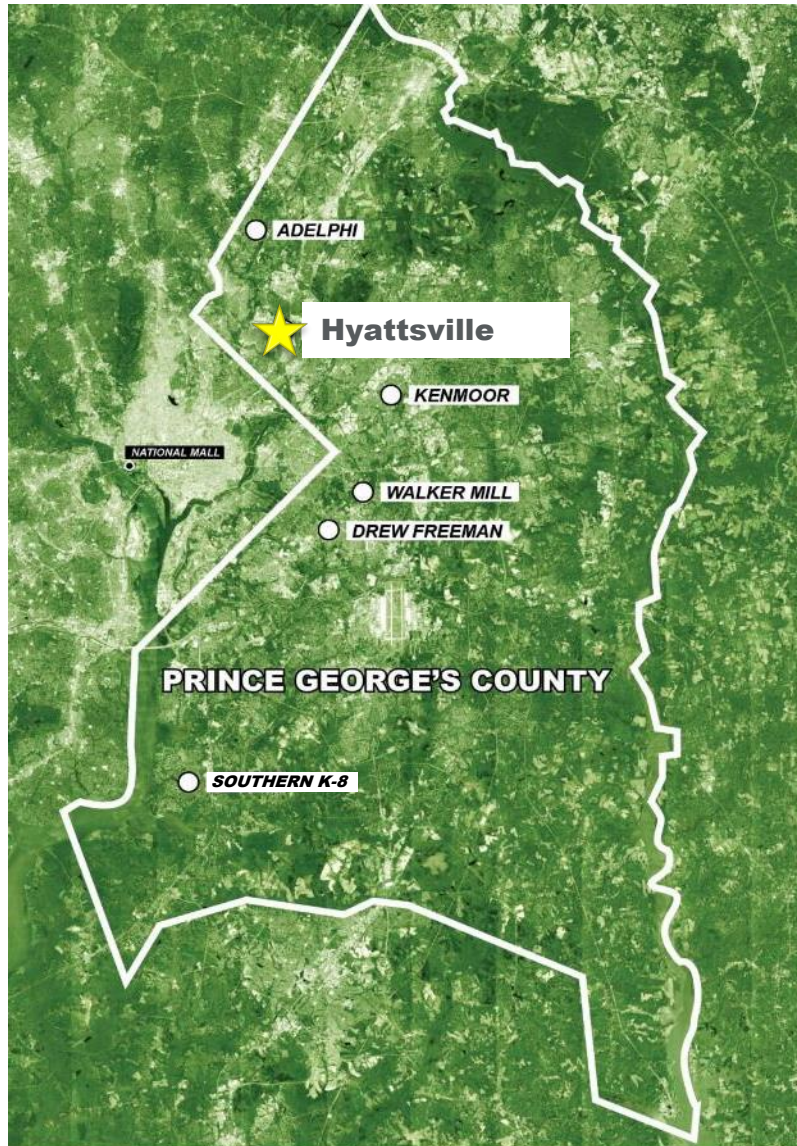
It is our goal to address as many questions as possible throughout and at the end of the presentation. All Q&A's will be posted to the program website, [www.PGCPSblueprintschools.com](http://www.PGCPSblueprintschools.com).







- **Overview of Blueprint Schools Program**
- **Schedule Overview**
- **Building Design Concept**
- **Site Logistics, Traffic and Safety**
- **Communication**
- **Questions and Answers**



## **Design-Build-Finance-Maintain (DBFM) Program**

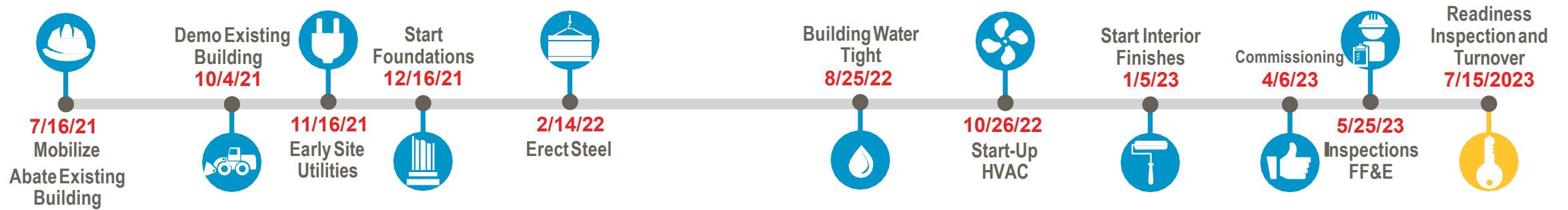
- Six New Schools
  - Five - 1,200 student middle schools
  - One - 2,000 student K-8
- 3 Year Design-Build Phase (2020 – 2023)
- 30 Year Building Maintenance Period (2023 – 2053)
- **Hyattsville Middle School Site Selection**







### SCHEDULE: HYATTSVILLE MIDDLE SCHOOL

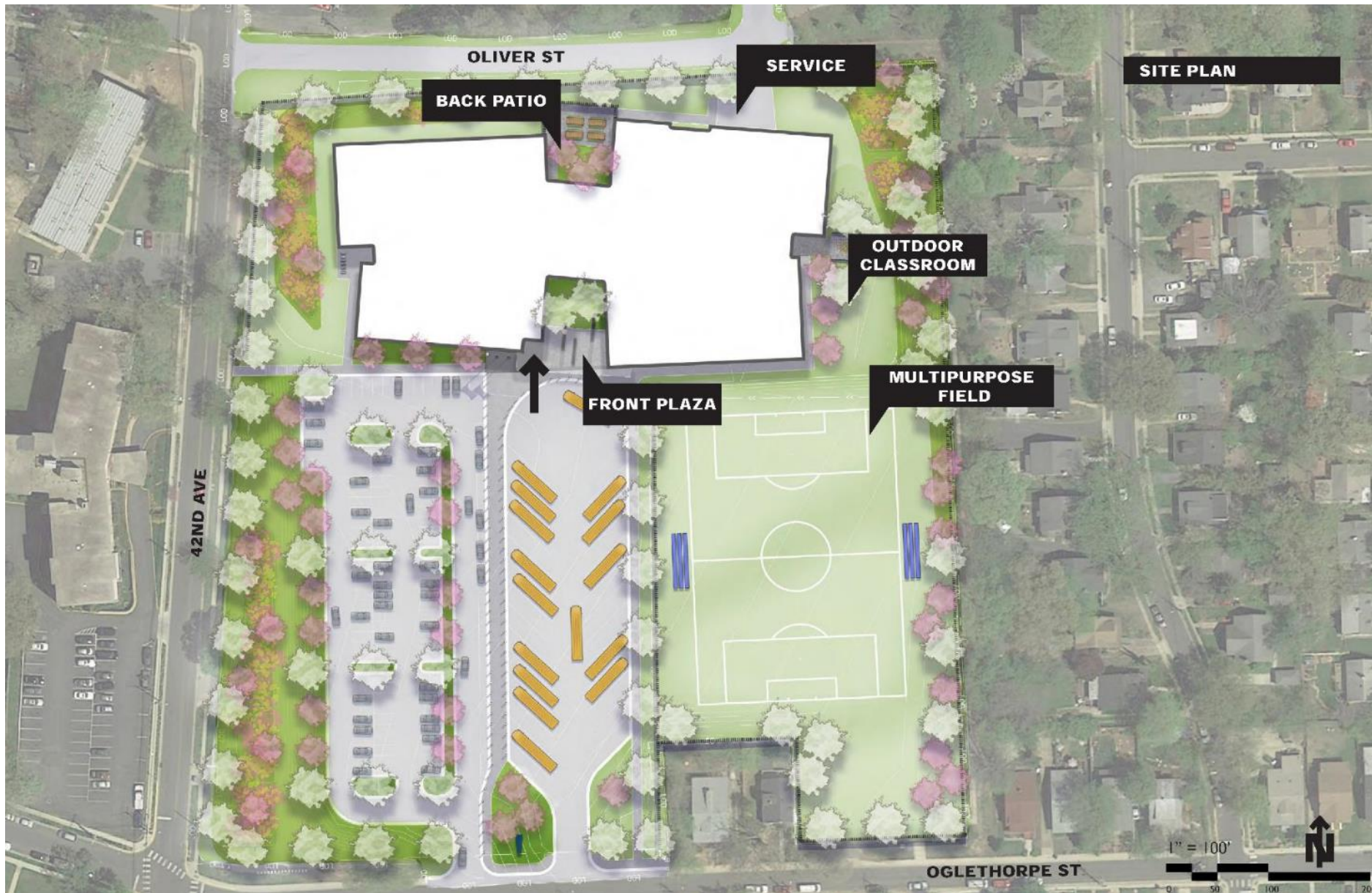


# Project Overview: Existing Site





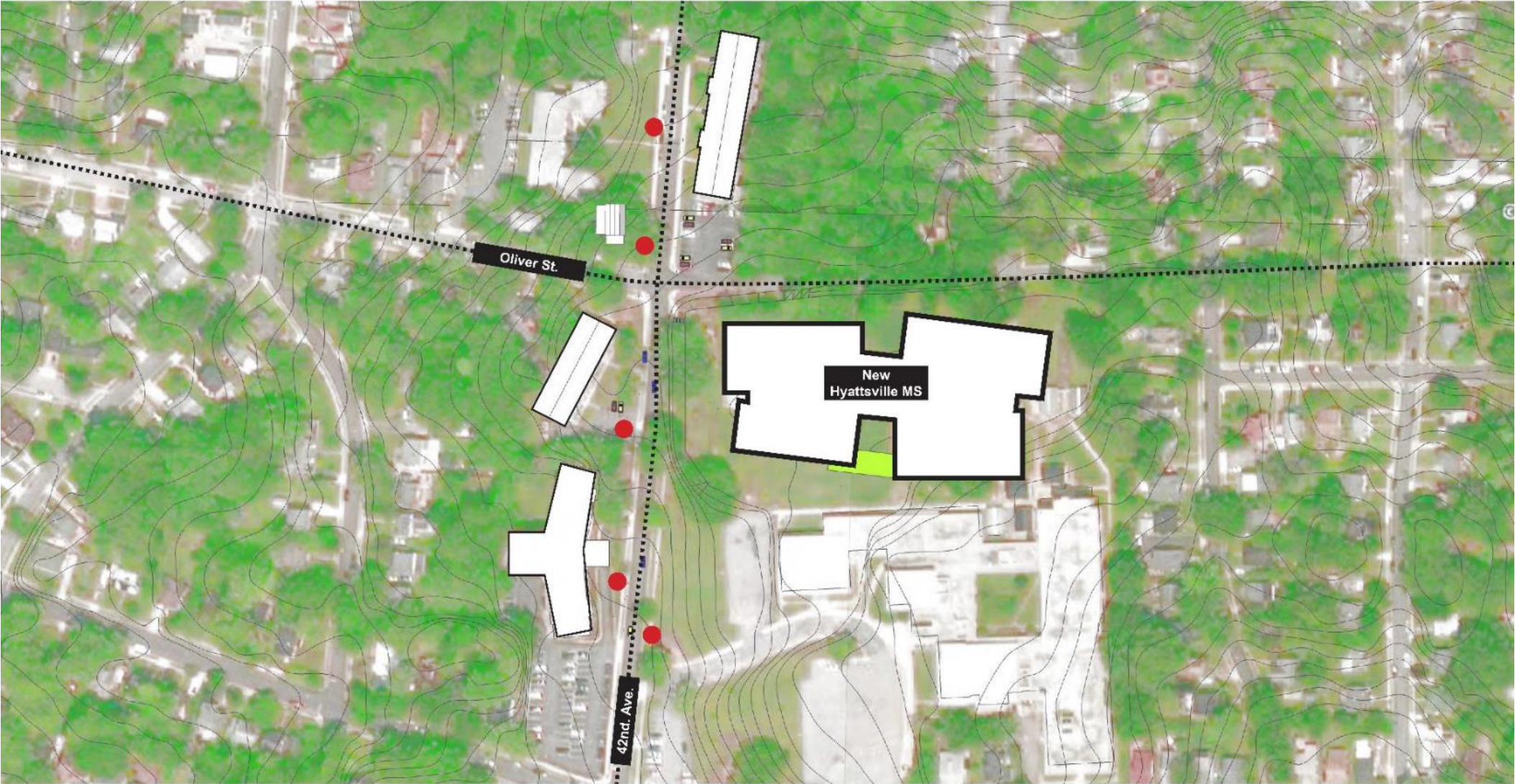
# Project Overview: Master Plan After Construction





# Project Overview: Project Images

## SITE AERIAL VIEW























**FRONT PERSPECTIVE**





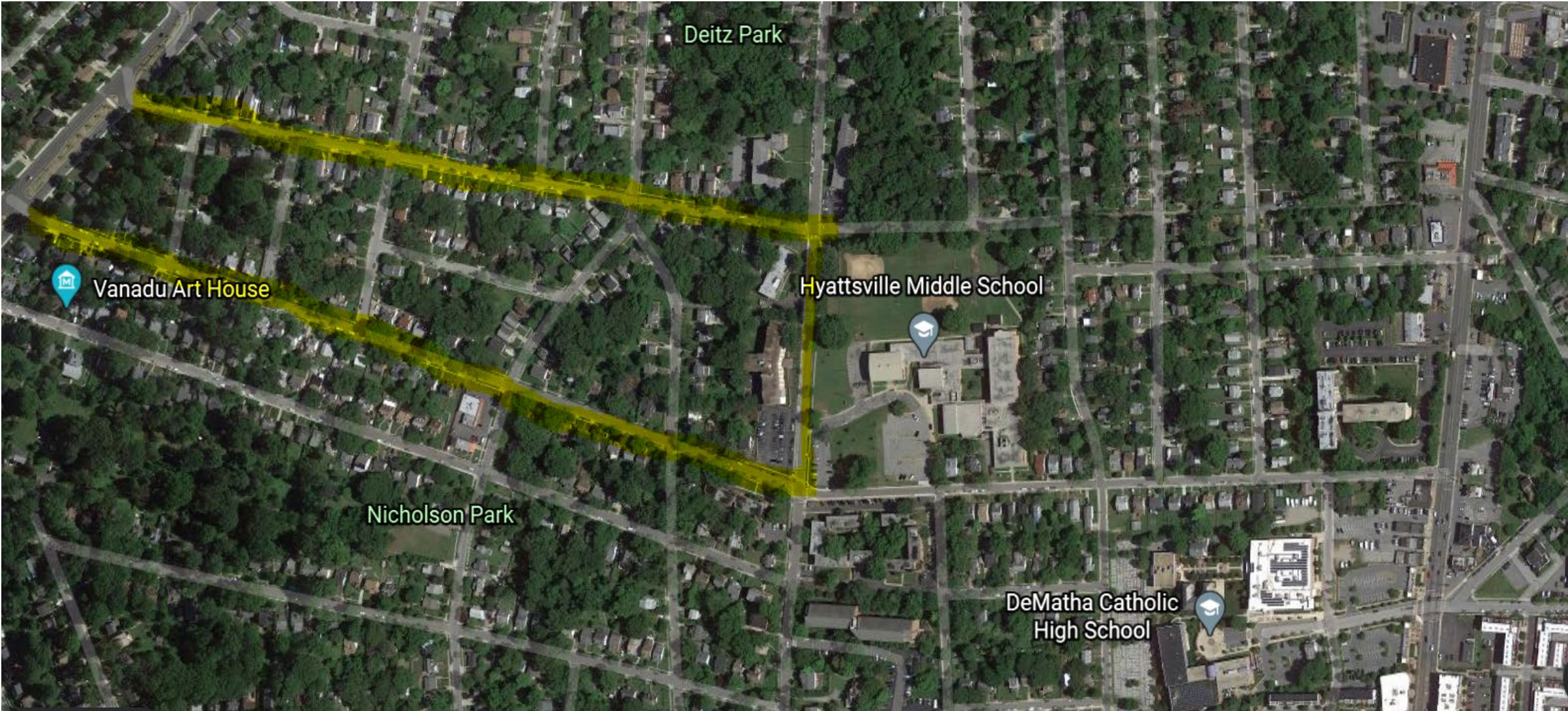
# Construction: Site Location Plan

## EXISTING SITE



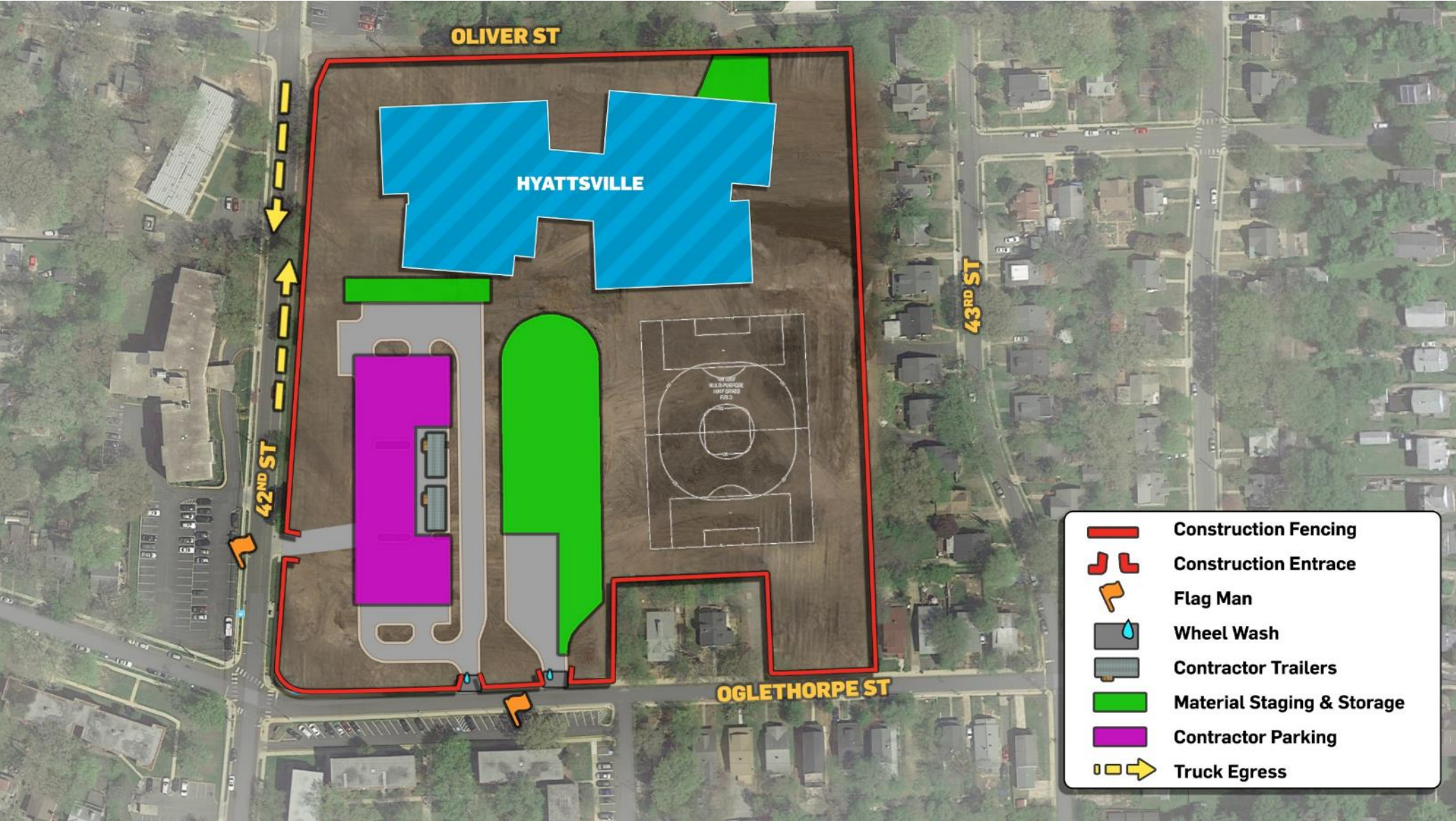


# Construction: Preliminary Vehicle Exiting Path





# Project Overview: Primary Site Utilization Study

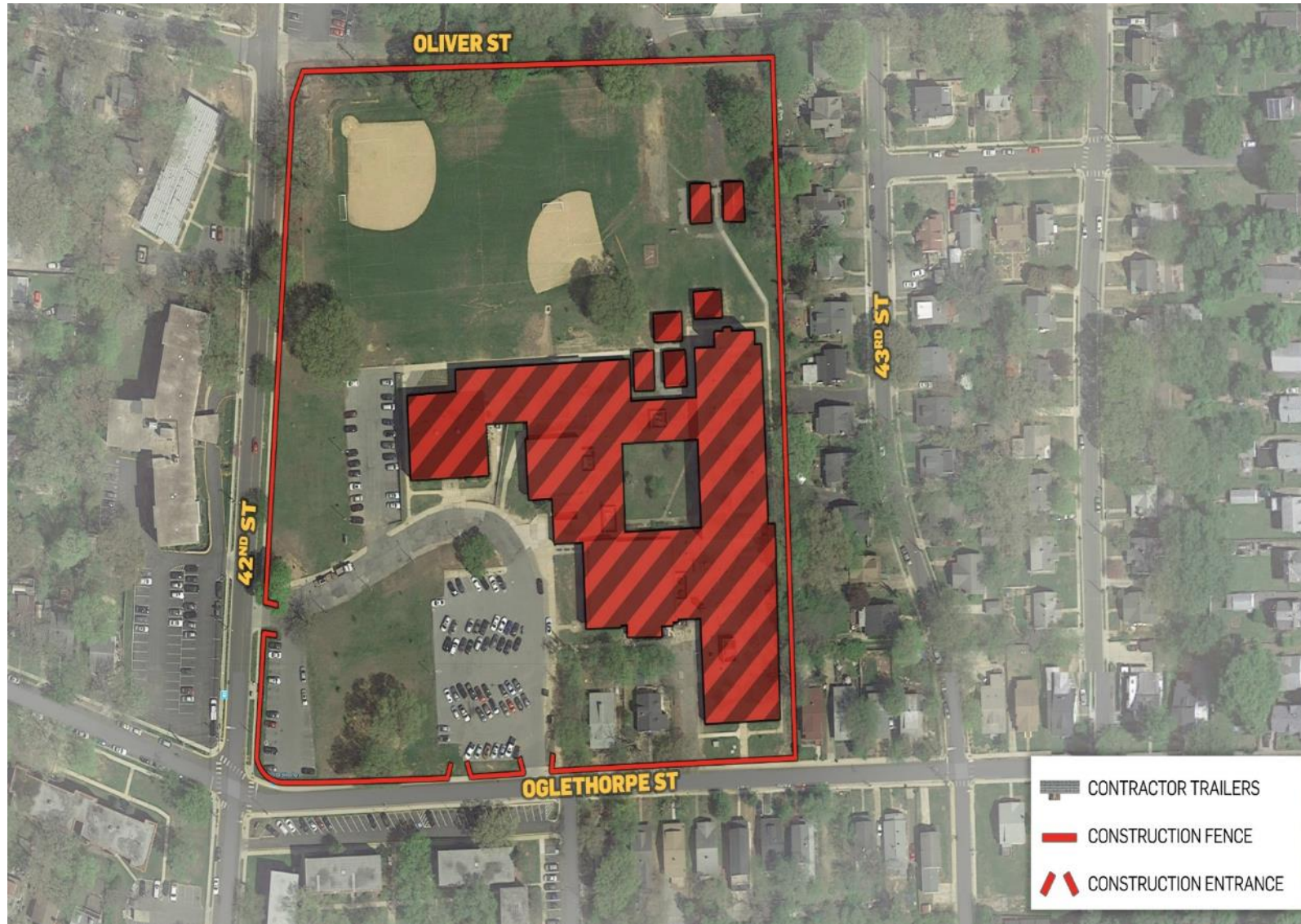


### **Site Management Activities**

- Construction Starts July 1, 2021
- Hours of Operation Follow Hyattsville and County Ordinances 8:00 AM to 6:00 PM Daily
- Construction Operations normally include Monday through Saturday with occasional Sunday Work
- Site open for workers at 7:00 AM No Idling or Construction Activities
- Safety Orientation and Stretch and Flex 7:45 AM
- Construction Activities Start 8:00 AM
- Sound Ordinances to be followed per county code
- Vehicles Staged on Site, NO IDLING



# Project Overview: Demolition Staging



## Staging For Demolition

- Starts July 1, 2021
- Vehicles Staged on Site
- Ingress and Egress via Existing entrances

## Construction Activity

### Sequence

- Secure Site with Fencing and Gates
- Set Up Site Security
- Perform Interior Selective Demolition
- Receive Approval for Raise Permit following Interior Selective Demolition
- Raise Building August-October



# Project Overview: **Construction**



## Major Activities

- Storm Water and Sediment Control Placement August 2021
- Site Excavation October 21
- Foundations December 2021
- Steel Erection February 2022
- Building Watertight August 2022
- Site Work Complete April 2023
- Building Complete July 2023

Security 24-7 Electronically Monitored



# Project Overview: **Site Security Preliminary Plan**



Security 247 Electronically Monitored

Construction Updates Provided on Project Website

Construction Progress Photos Provided on Project Website

Emergency Contract Information Provided on Site Fencing and Community Project Website

[WWW.PGCPSBlueprintSchools.Com](http://WWW.PGCPSBlueprintSchools.Com)





# THANK YOU

Questions: [jason.washington@pgcps.org](mailto:jason.washington@pgcps.org)

[www.PGCPSblueprintschools.com](http://www.PGCPSblueprintschools.com)



PRINCE GEORGE'S COUNTY  
EDUCATION & COMMUNITY PARTNERS