



HYATTSVILLE ENVIRONMENTAL DEPOT CONCEPTUAL DESIGN

Presented by:



Emily Clifton | Associate Executive Director

Blair Danies | Landscape Designer and Environmental Planner

City Council Meeting
April 18, 2022

LOW IMPACT DEVELOPMENT CENTER



- Non-profit research organization established in 1998
- Focused on sustainable stormwater management that promotes beneficial economic and community development outcomes in diverse communities.

OVERVIEW

Purpose:

- Prepare an environmental depot conceptual design

Pre-identified Needs:

- Covered oil/ antifreeze recycling drop-off *
- Household Paint drop-off ◇◇
- Level 2 electric charging station for City vehicles
- Recycling for general recyclables, food scraps, and electronics ◇◇

* During regular business hours only

◇◇ Electronics, household paints on designated event days, unless demand warrants additional times

Overview

Considerations:

Area:

- Local neighborhood needs
- Attractive façade / frontage + ROW consideration
- Neighborhood-Activity-Center zone

Site:

- Pedestrian & vehicular flows
- Landscaped and open space
- Green stormwater management

Open Air Building/Yard:

- Recycling collection
- Electric charging station(s)
- Temporary / multi-purpose storage
- Solar collector panels

Building:

- Multi-functional
- Gathering / meeting spaces

INSPIRATION: REPURPOSE EXISTING BUILDING



OPEN WORK SPACE



FULL CUT OFF EXTERIOR LIGHTING



INTERIOR SHELVING / STORAGE



GLASS GARAGE DOOR

INSPIRATION: PROVIDE OUTDOOR MEETING SPACE



OUTDOOR CLASSROOM / MEETING SPACE



OUTDOOR SINK



MICRO-BIORETENTION

BUILDING FAÇADE



INSPIRATION: CREATE MULTI-FUNCTIONAL YARD



OPEN AIR BUILDING



ARTISTIC, INTERACTIVE STREET VIEW



VERTICAL SHELVING

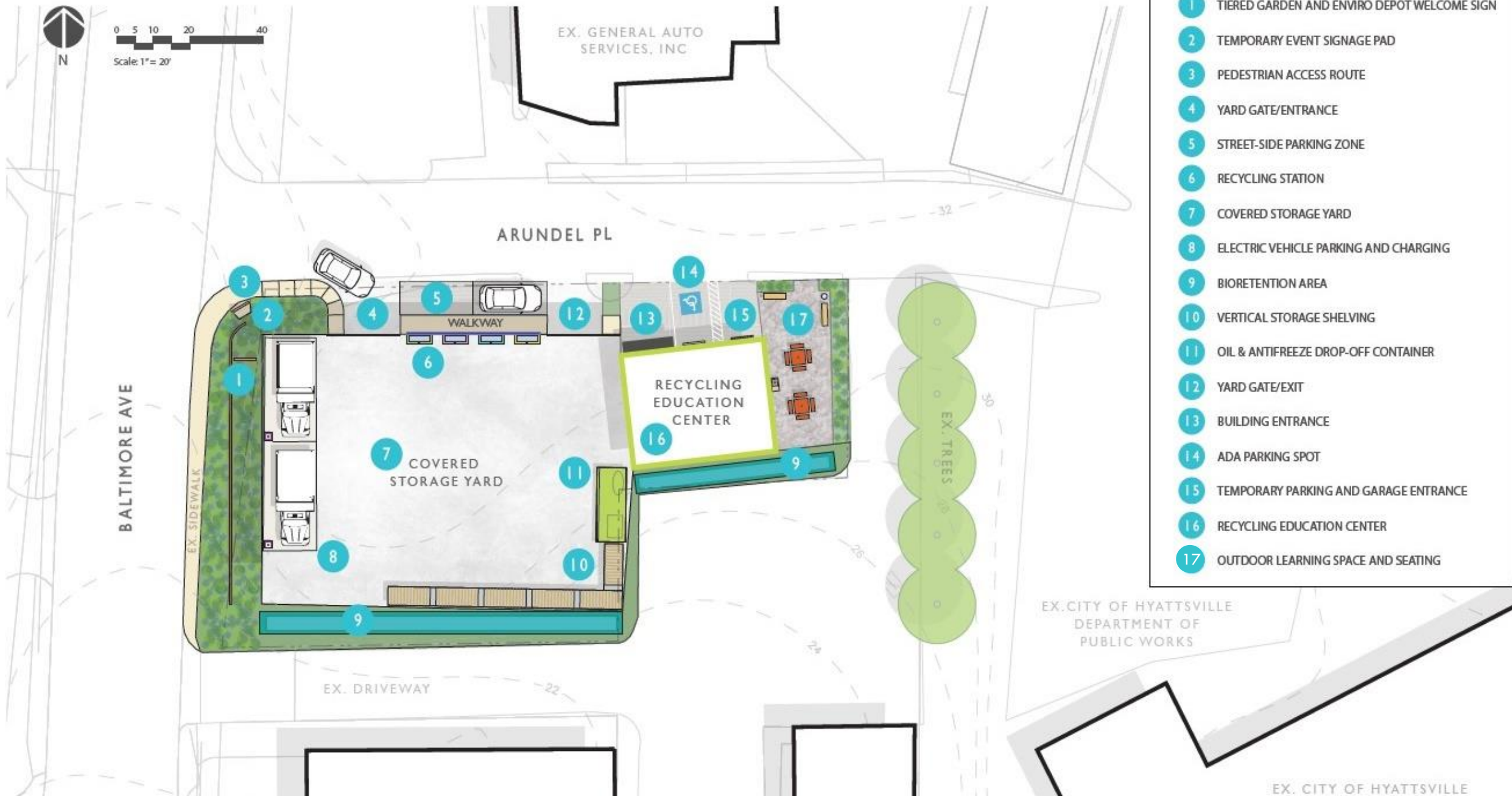


BIG BELLY CANS

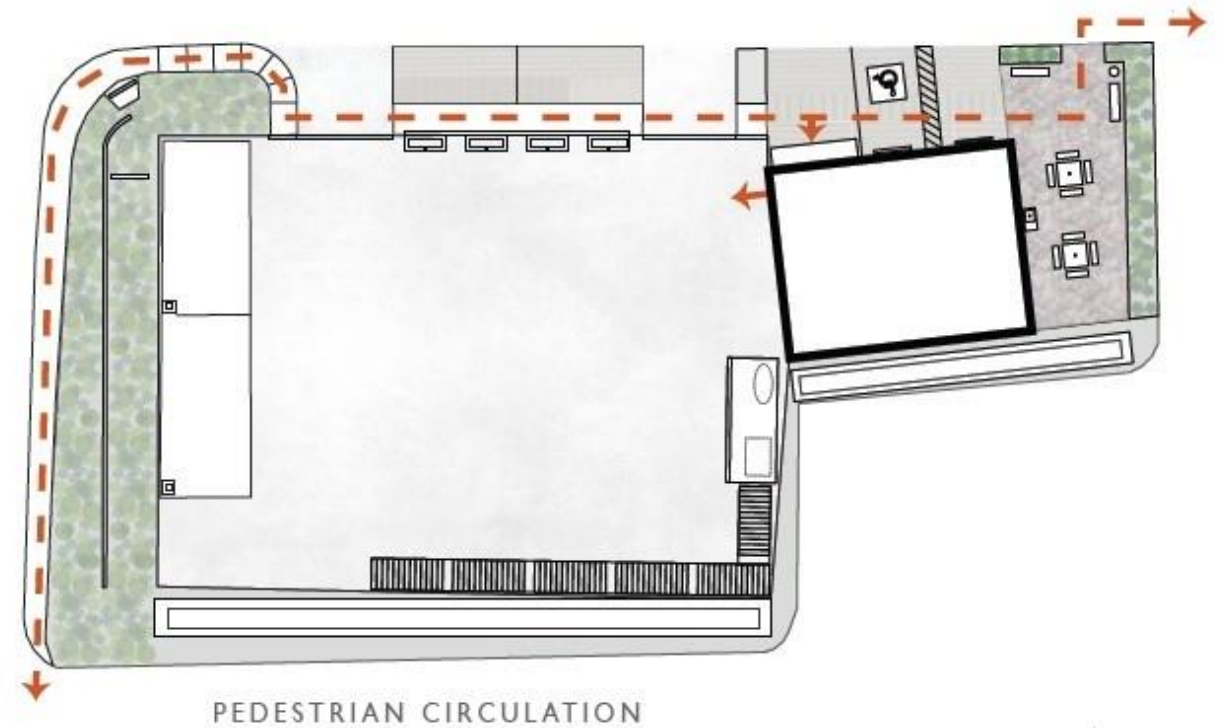
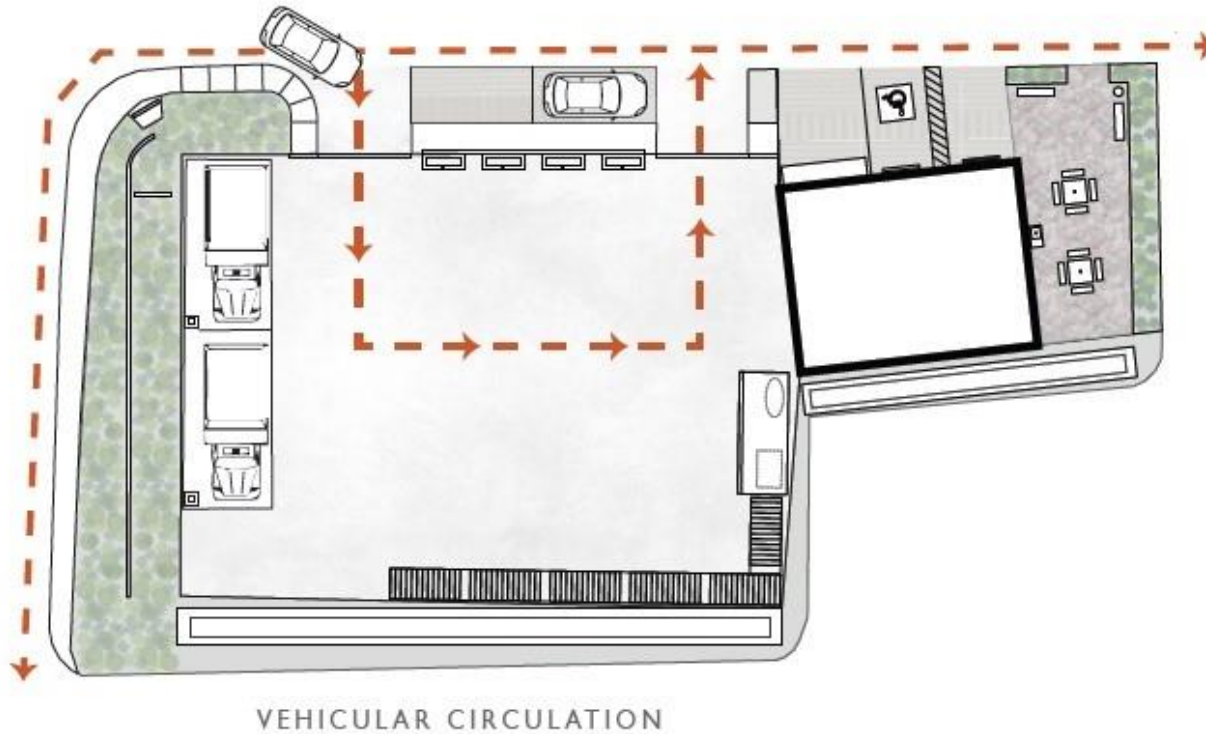


USED OIL AND ANTIFREEZE CONTAINER

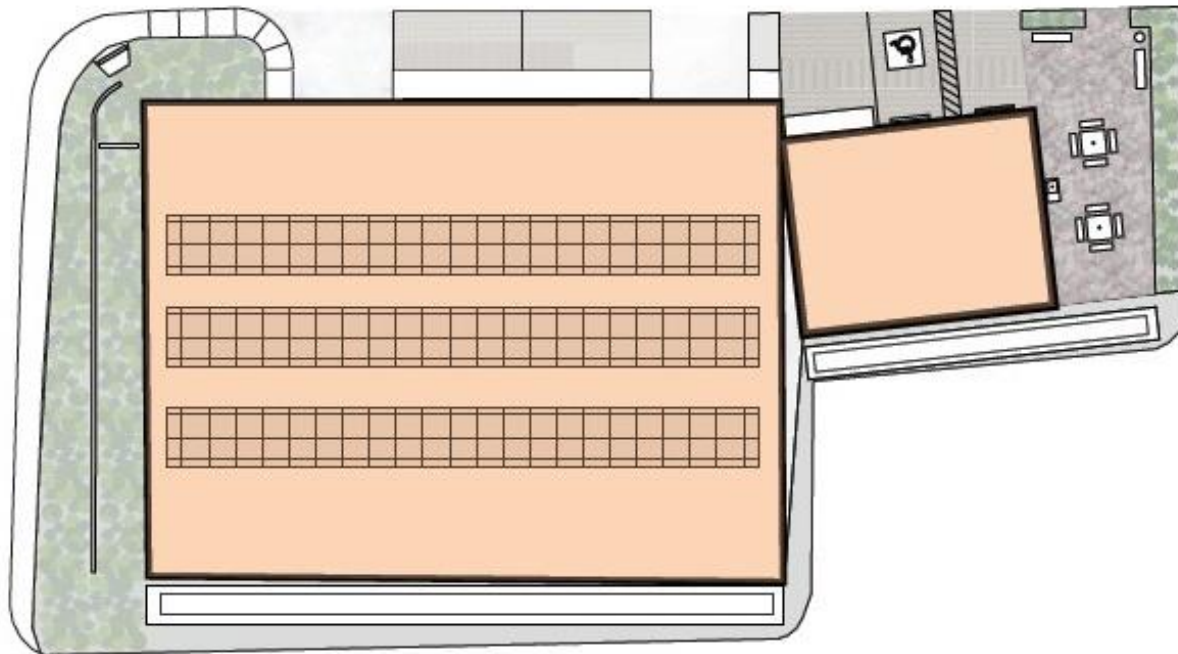
CITY OF HYATTSVILLE ENVIRONMENTAL DEPOT CONCEPT DESIGN



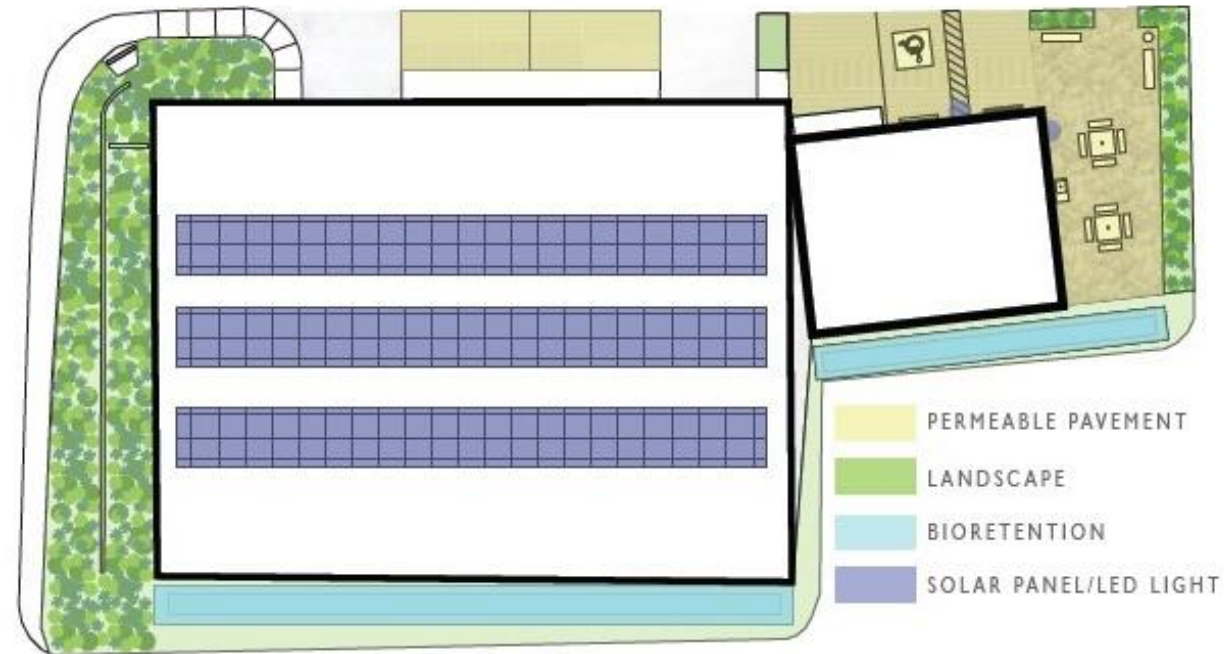
Functional Diagrams: Vehicular & Pedestrian Circulation



Functional Diagrams: Building Footprint & Sustainability Features



BUILDING COVERAGE



SUSTAINABILITY FEATURES

Next Steps



- Survey of additional environmental services/needs
- Feedback on design elements
- Identify potential locations

FUNDING

Chesapeake Bay Trust Green Streets, Green Jobs, Green Towns

The United States Environmental Protection Agency Region 3, Maryland Department of Natural Resources, and the Chesapeake Bay Trust



City of Hyattsville

