

Prince George's County Public Schools
Hyattsville City Council Presentation

HYATTSVILLE MIDDLE SCHOOL

April 5, 2021



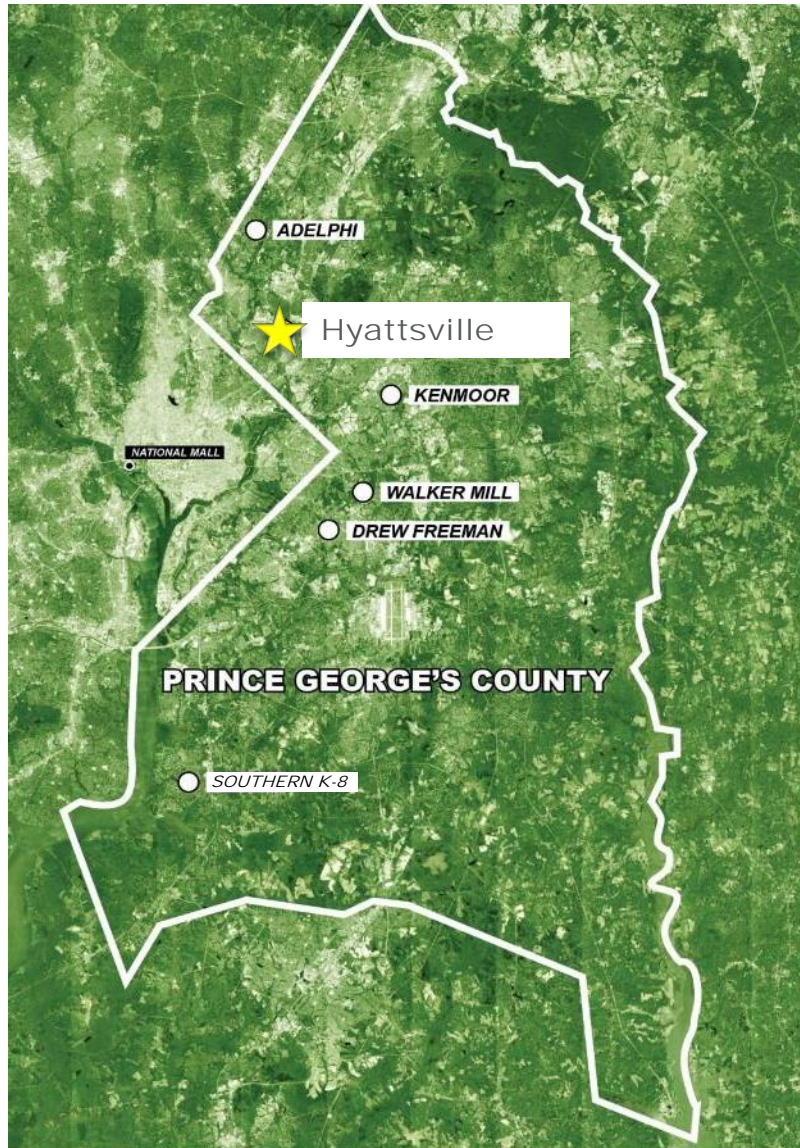
PGCPS



PRINCE GEORGE'S COUNTY
EDUCATION & COMMUNITY PARTNERS

Important Notice: This document contains confidential information proprietary to Gilbane Building Company, including but not limited to trade secrets and/or copyrighted material. Any unauthorized disclosure, duplication, or use – in whole or in part – of such confidential information for any purpose is strictly prohibited. All rights reserved by Gilbane Building Company.

Project Overview: **Blueprint School Program**



Design-Build-Finance-Maintain (DBFM) Program

- Six New Schools
 - Five - 1,200 student middle schools
 - One - 2,000 student K-8
- 3 Year Design-Build Phase (2020 – 2023)
- 30 Year Building Maintenance Period (2023 – 2053)
- **Hyattsville Middle School Site Selection**

Project Overview: **Blueprint School Program**



Town Hall Meetings

- ✓ On-going town halls provided for each school community.
- ✓ Presentations will include project and community impact updates.
- ✓ Participants' questions are addressed during the meeting; all follow-up materials/additional info is provided on the program website:
www.pgcpsschoolsnow.com



Project Planning Committees (PPC)

- ✓ PPC teams are representative of individual school communities, selected and led by school principals.
- ✓ PPCs will use their community and school-based expertise to inform design and actively participate in each phase of the design-build period.
- ✓ Feedback loop provides opportunities for PPCs to provide guidance and support the advancement of the school design.



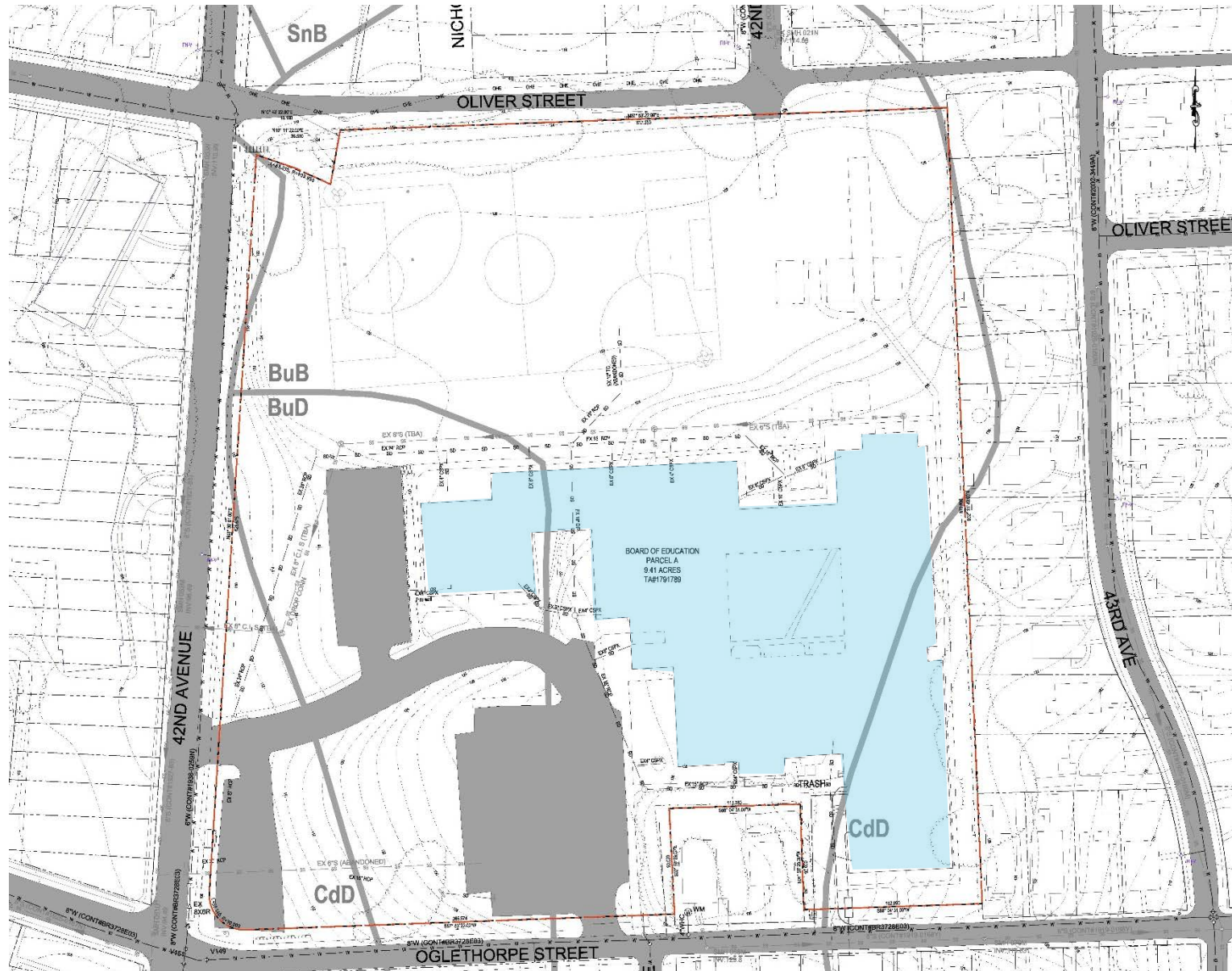
Community Investment

- ✓ PGCECP will provide monthly MBE/CBB outreach and pre-certification events.
- ✓ Community investment opportunities and program updates will be shared at town halls, with the PPCs and on the program website.

Location of site



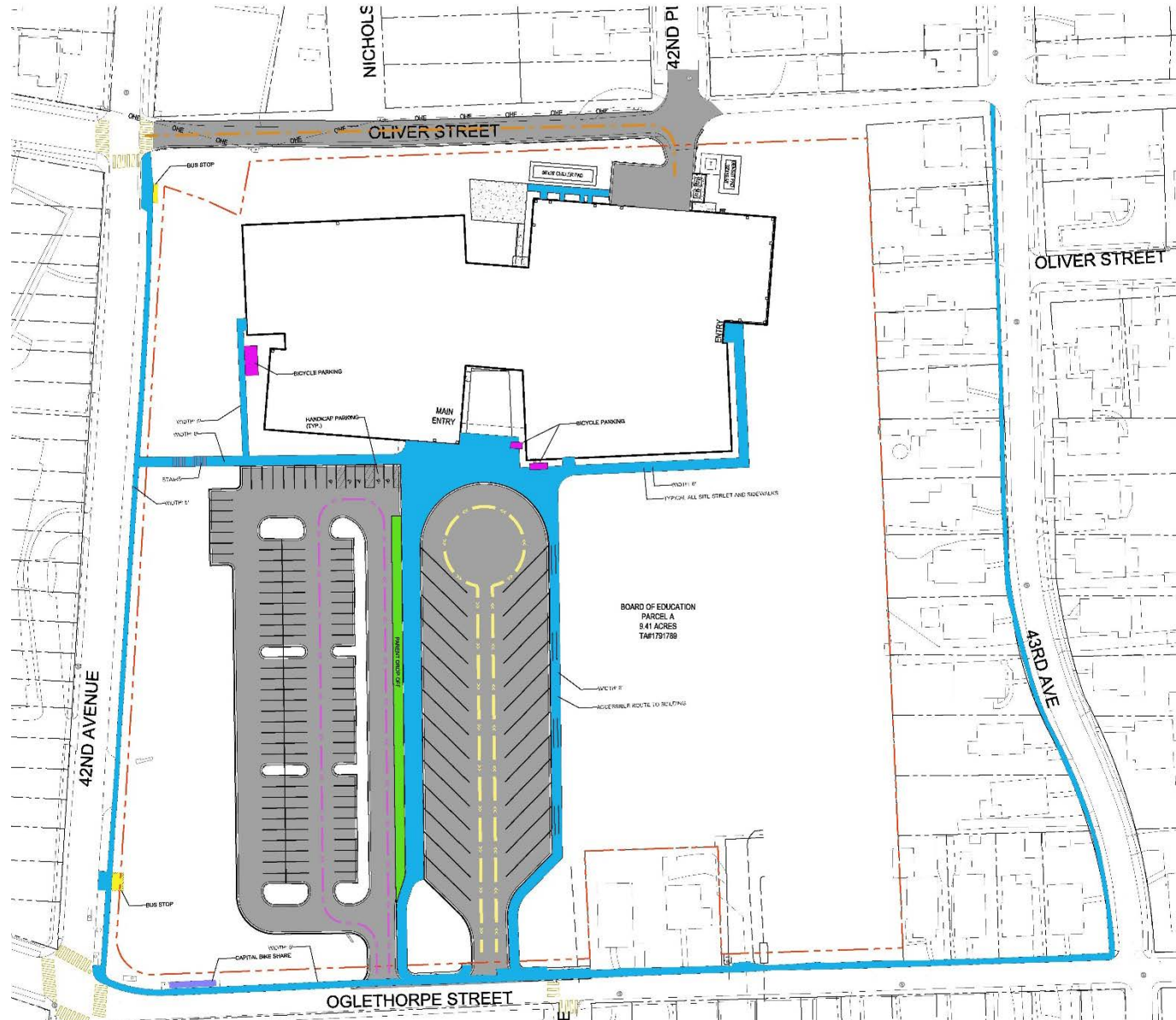
Existing Site Plan



Proposed Site Plan



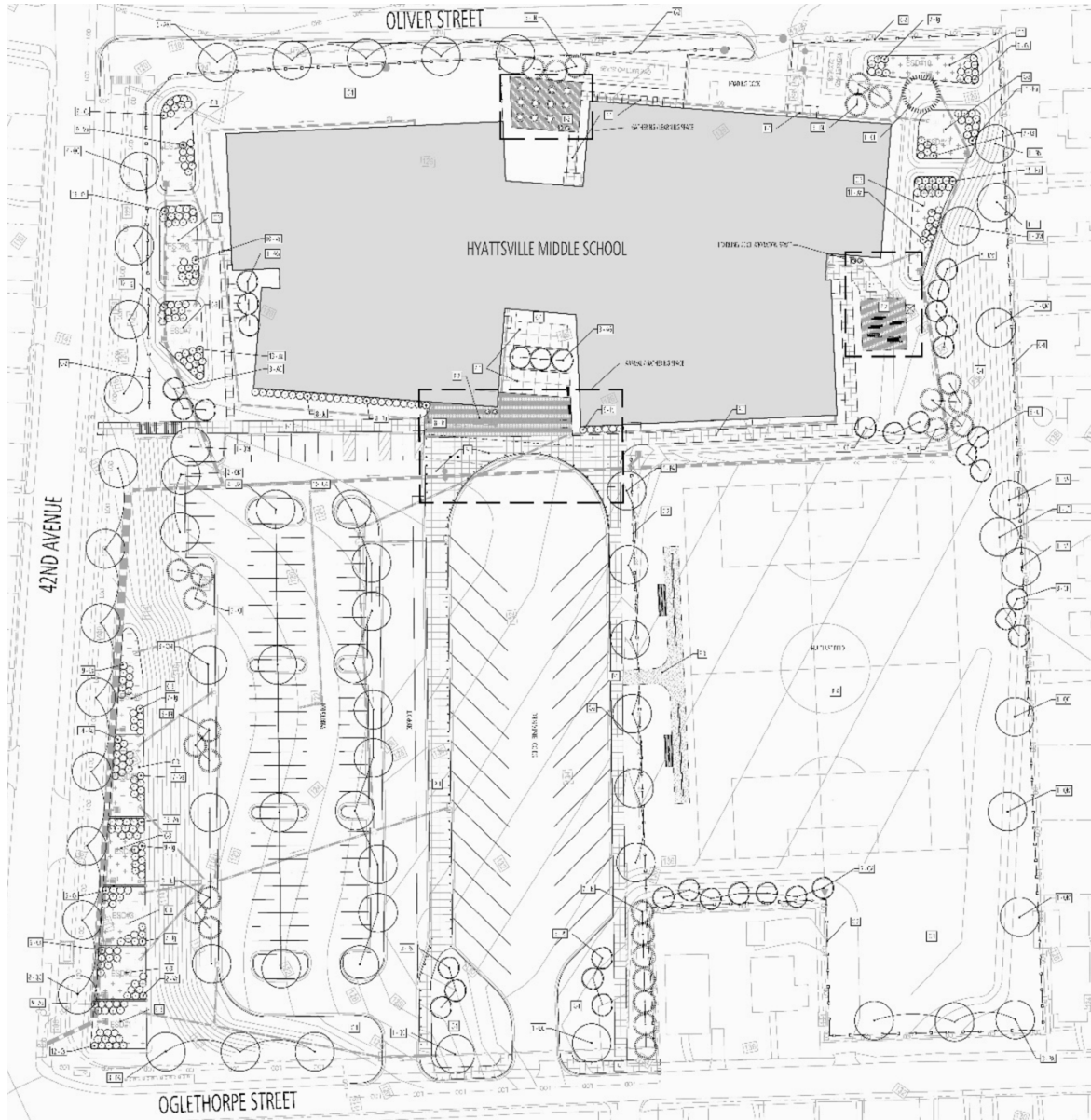
Site Circulation Plan



LEGEND

- PEDESTRIAN AND BICYCLE CIRCULATION
- PARENT DROP-PFF
- DRIVEWAY
- SCHOOL BUS CIRCULATION
- PASSENGER CAR CIRCULATION
- PROPERTY LINE
- SERVICE VEHICLE ACCESS
- BUS STOP
- CAPITAL BIKE SHARE
- PEDESTRIAN CROSSING
- BICYCLE PARKING
- HANDICAP PARKING
- STAIRS

Landscape Plan



Building Plans



FOURTH FLOOR PLAN



THIRD FLOOR PLAN

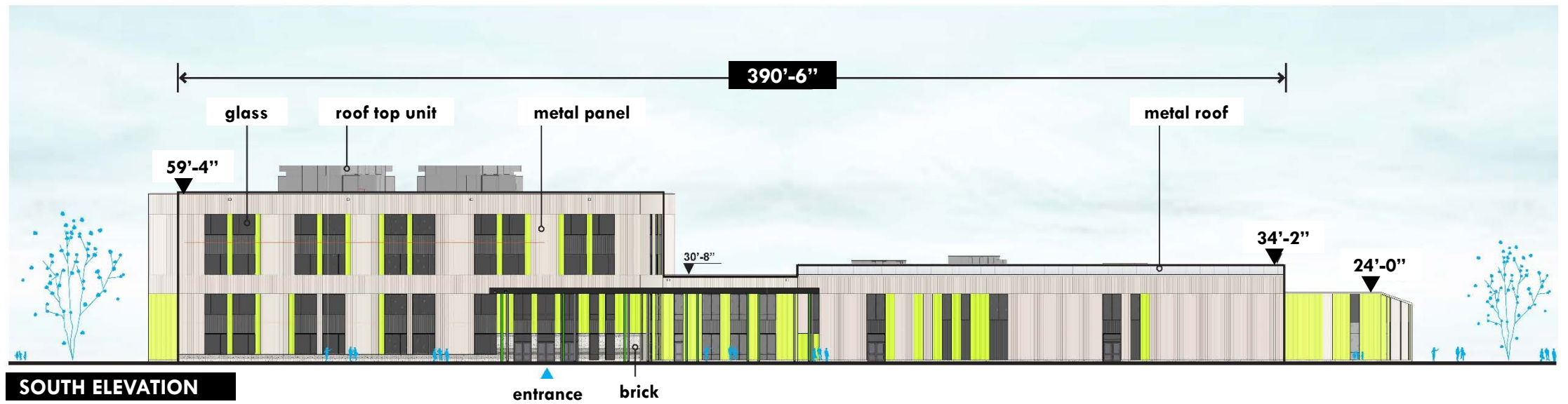
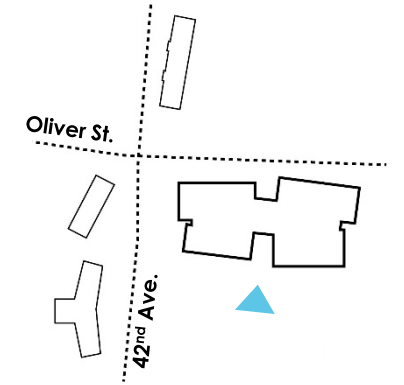


SECOND FLOOR PLAN

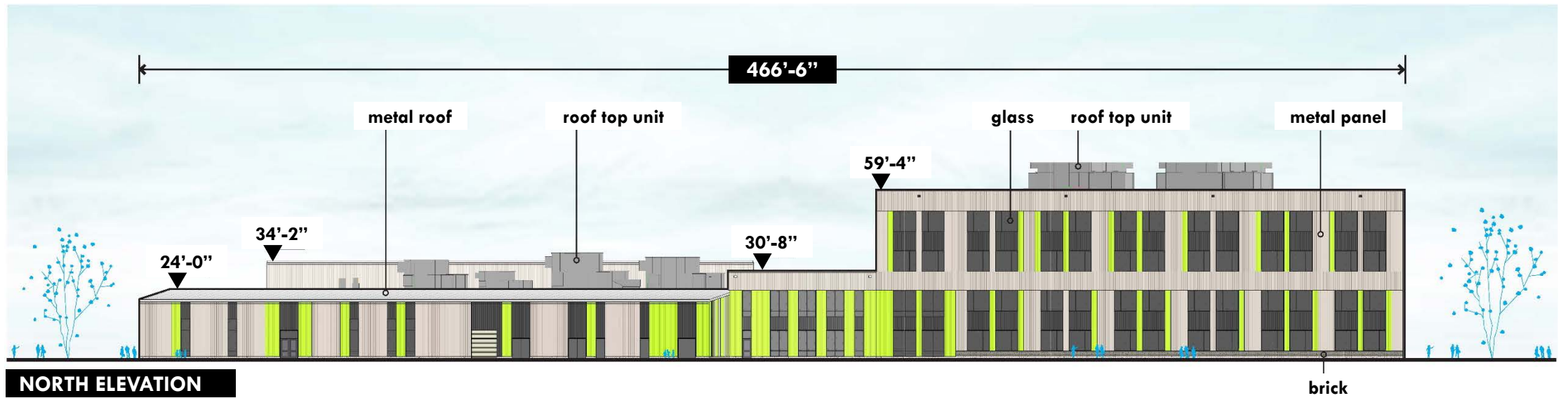
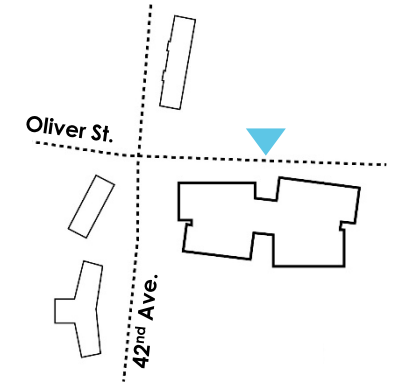


FIRST FLOOR PLAN

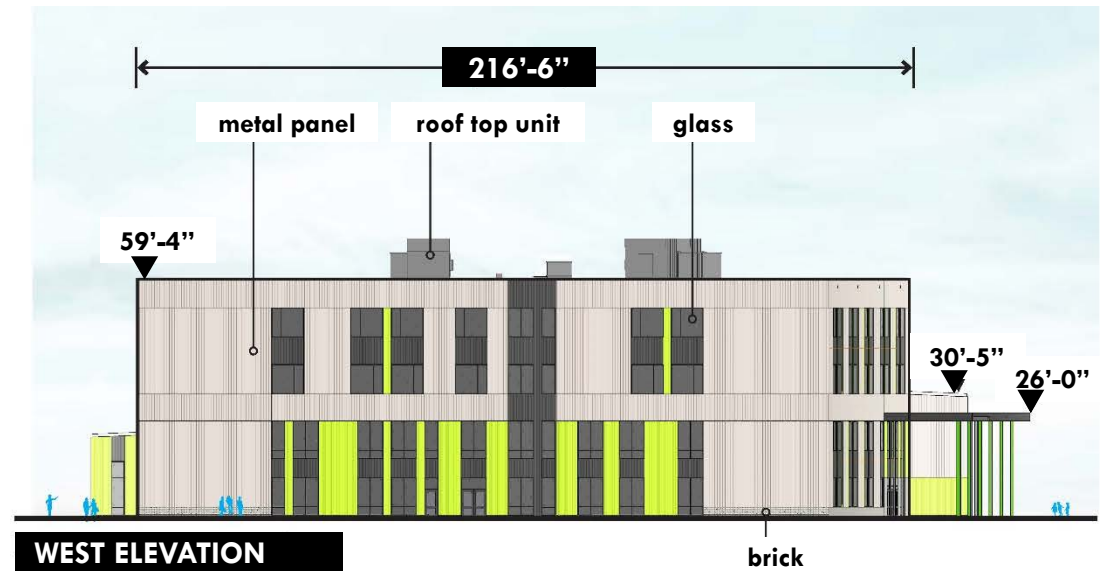
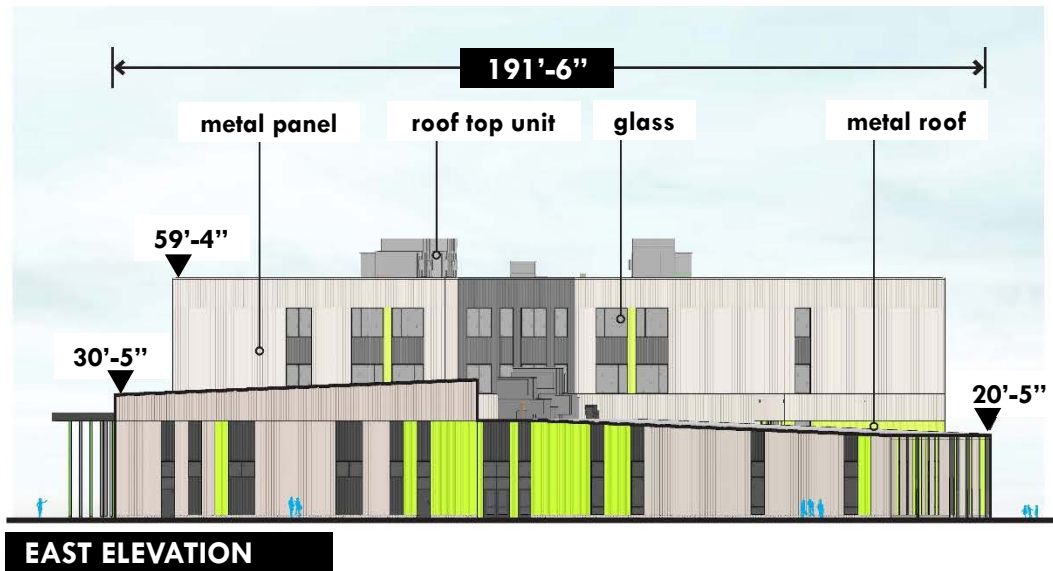
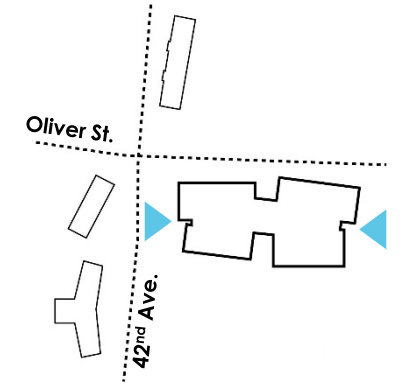
Building Elevations



Building Elevations



Building Elevations



Building Views: front entrance



Building Views: 42nd PI and Oliver St.



THANK YOU

Questions: jason.washington@pgcps.org



PRINCE GEORGE'S COUNTY
EDUCATION & COMMUNITY PARTNERS