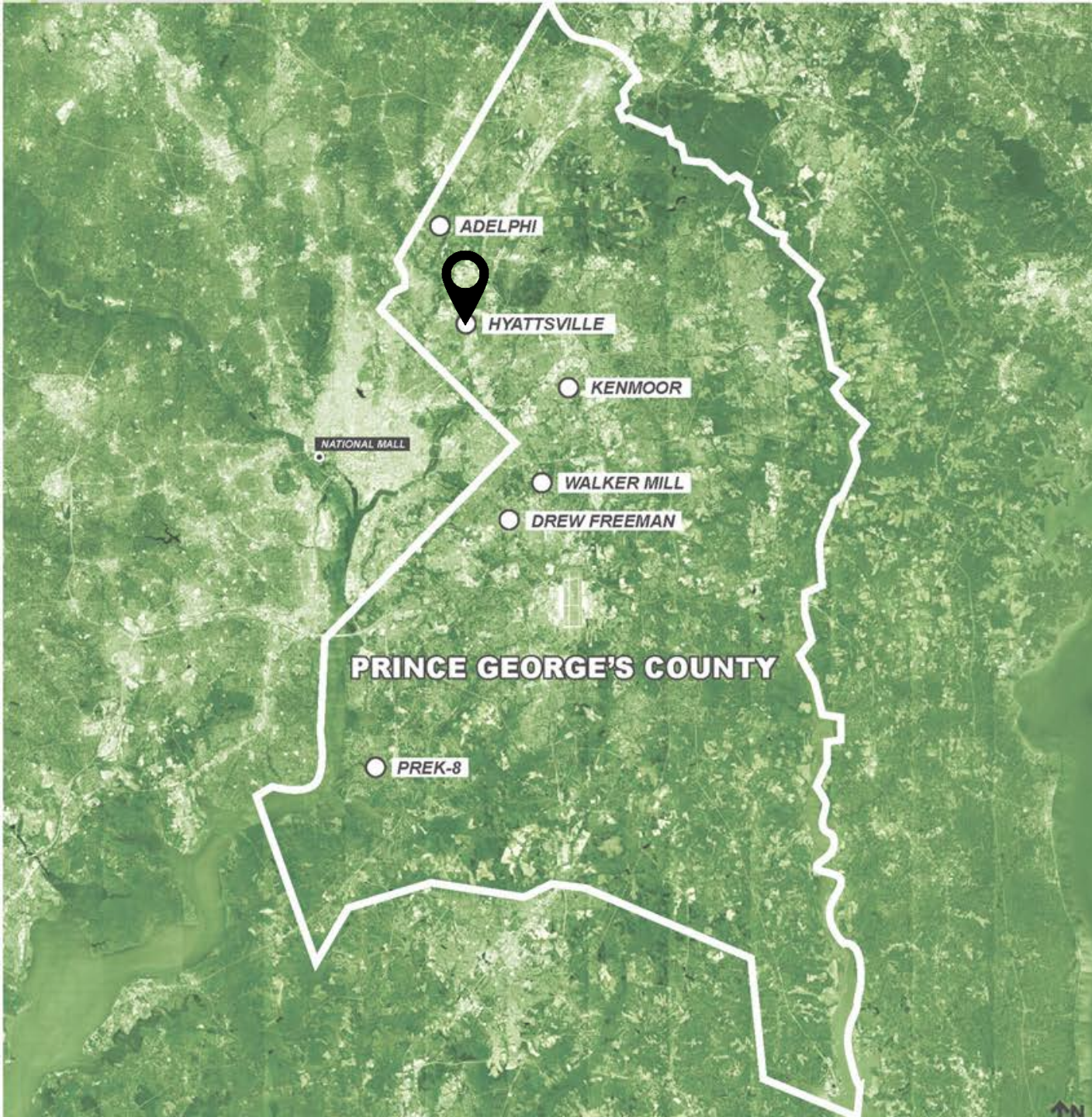


Hyattsville Middle School

ONE OF SIX SCHOOLS BEING BUILT

The sites for the projects vary, some are more urban like Drew Freeman, while others are more undeveloped (like the new PreK-8 lot). For the sake of educational equity, identity, economy, and constructability, our challenge was to design buildings and site strategies which applied to all sites, while being adaptable and flexible as needed.



ADELPHI



DREW FREEMAN



KENMOOR



WALKER MILL



HYATTSVILLE



PREK-8

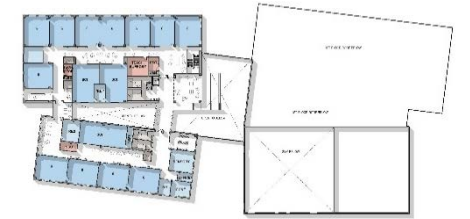


Project Design

Performing Arts



Hyattsville Middle School





Project Design





Project Design





Project Design

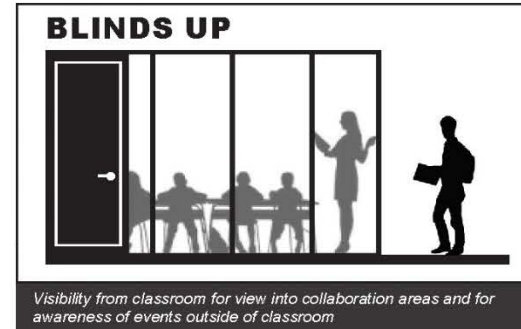




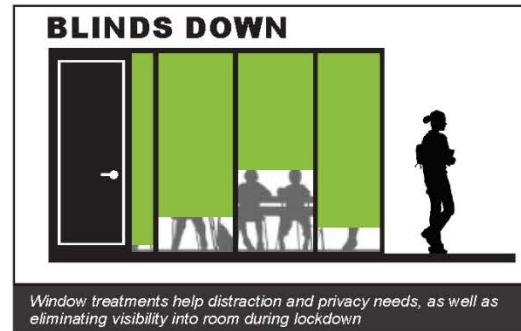
Project Design

SECURITY CONSIDERATIONS

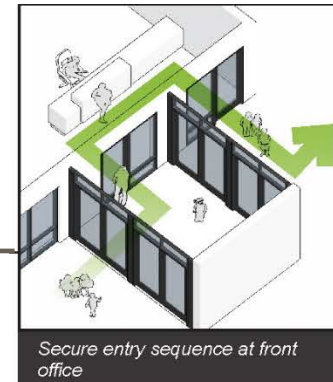
The building has multiple layers of safety and security. The secure vestibule requires visitors to check in with the front office before being granted access to the building. The academic areas can be isolated from more public areas by closing doors at entrances to "houses". Under normal school conditions, the doors to the 'houses' remain in an held-open position for easy circulation and an inviting entrance into each academic area. However, doors to the academic areas can be locked should the need arise without compromising emergency exiting routes. Classroom areas with glazing into collaboration areas are equipped with blinds should the occupants feel the need to obstruct the view into the room.



Visibility from classroom for view into collaboration areas and for awareness of events outside of classroom



Window treatments help distraction and privacy needs, as well as eliminating visibility into room during lockdown



Secure entry sequence at front office



Lockdown entrance to 'houses' and other zones to compartmentalize building



Project Design



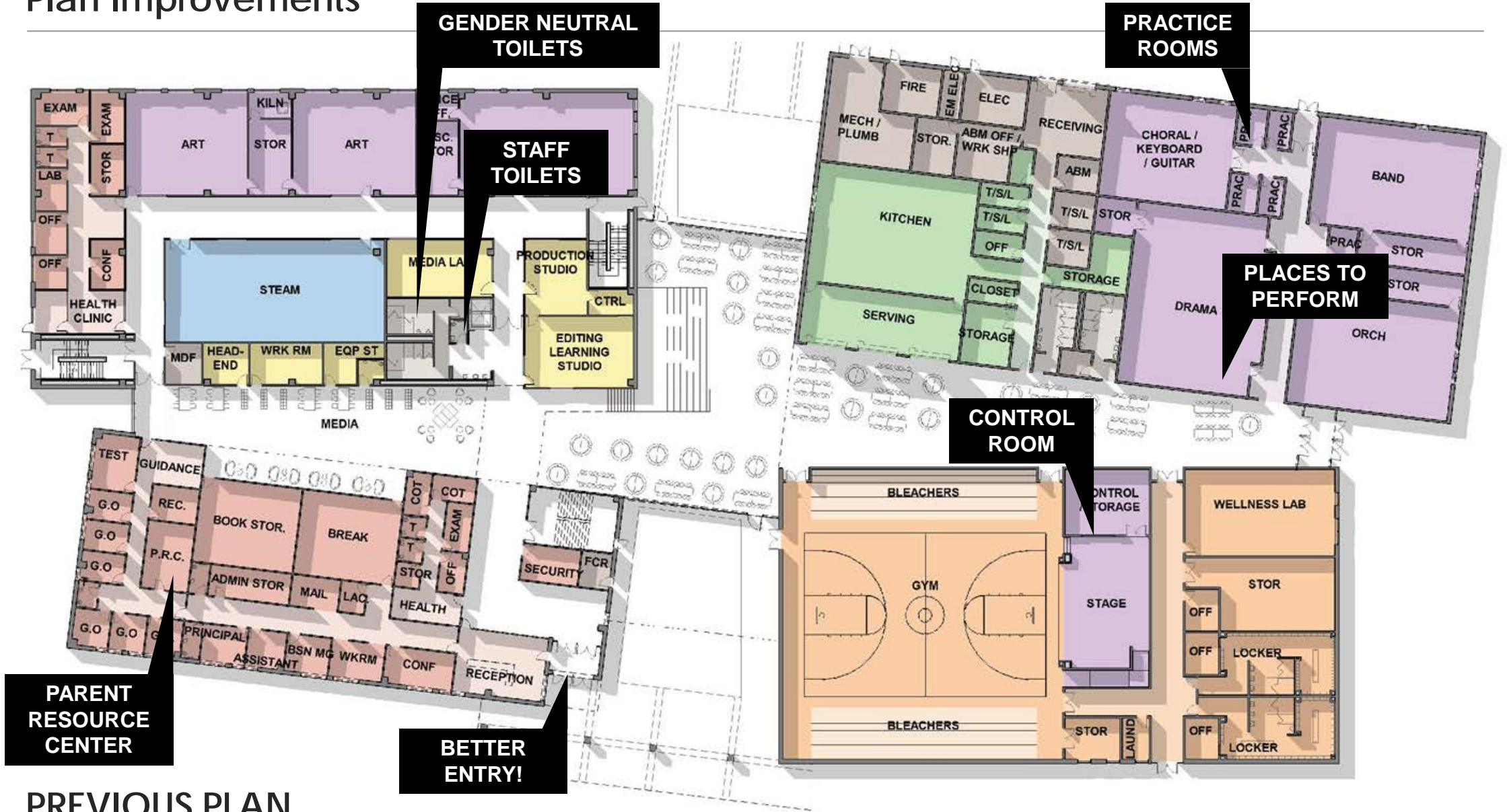


Project Design





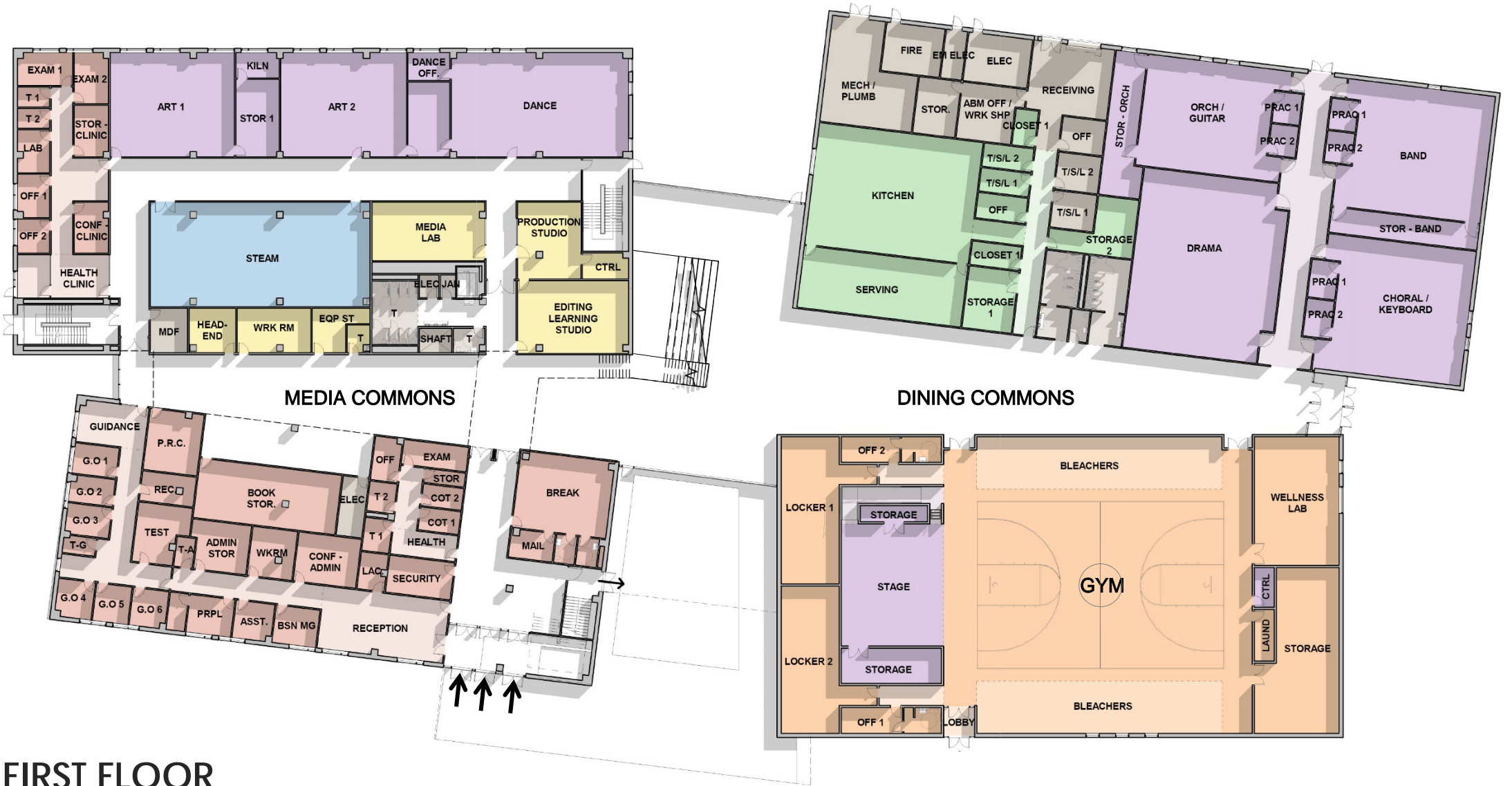
Plan Improvements



PREVIOUS PLAN



Floor Plans



FIRST FLOOR



Gender Neutral Student Restrooms and Staff Toilet



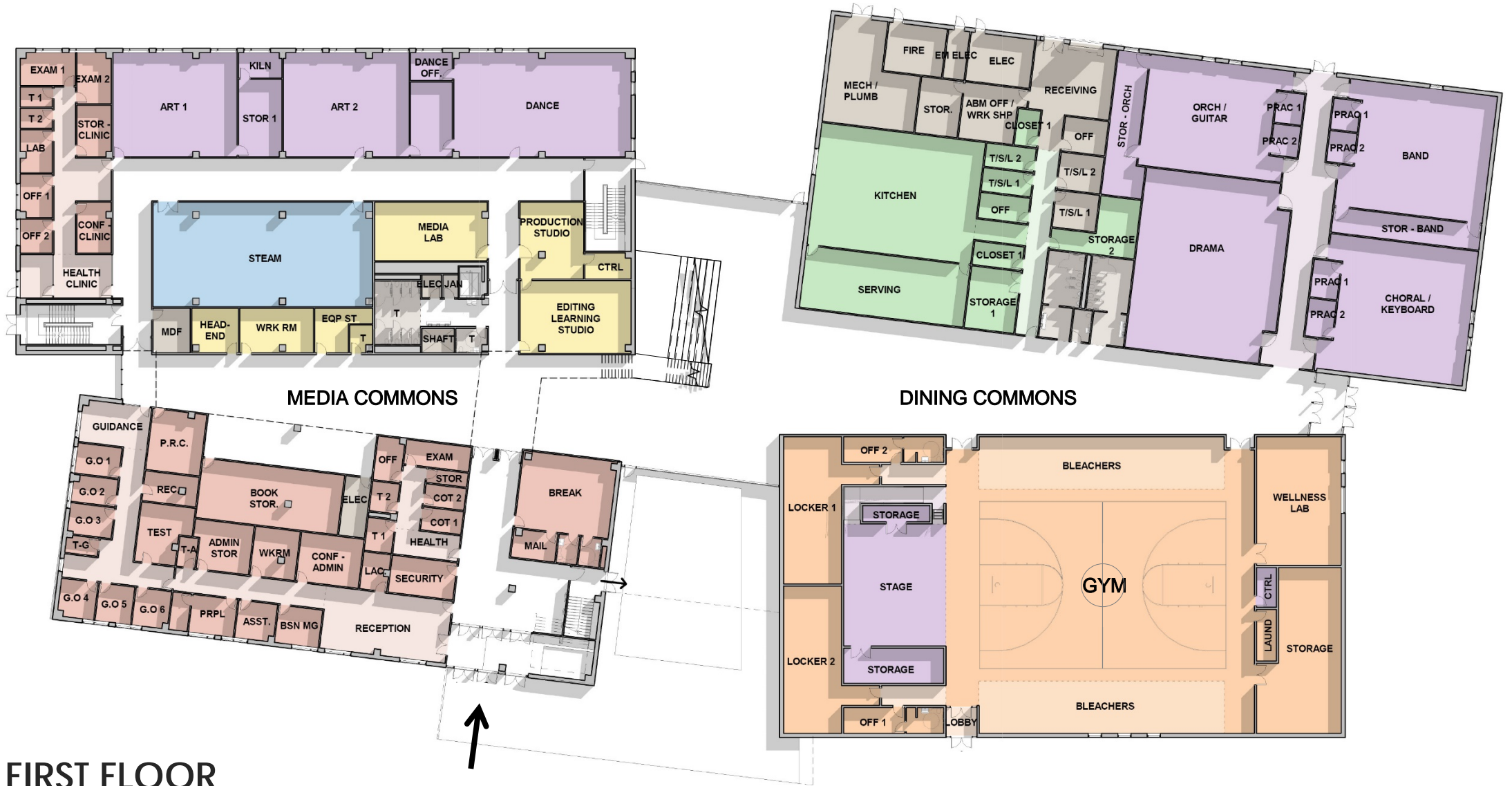
TYPICAL LAYOUT



ZERO-SIGHTLINE PARTITIONS



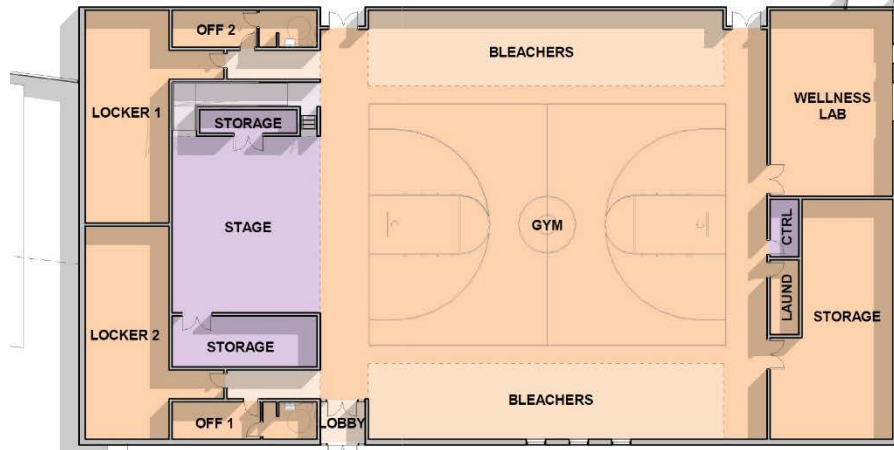
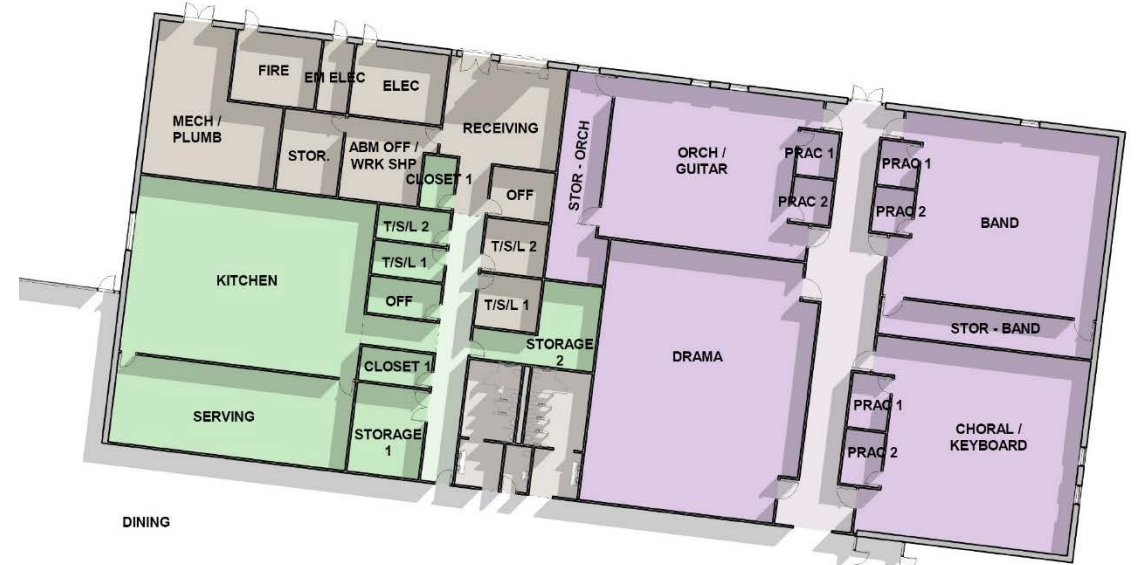
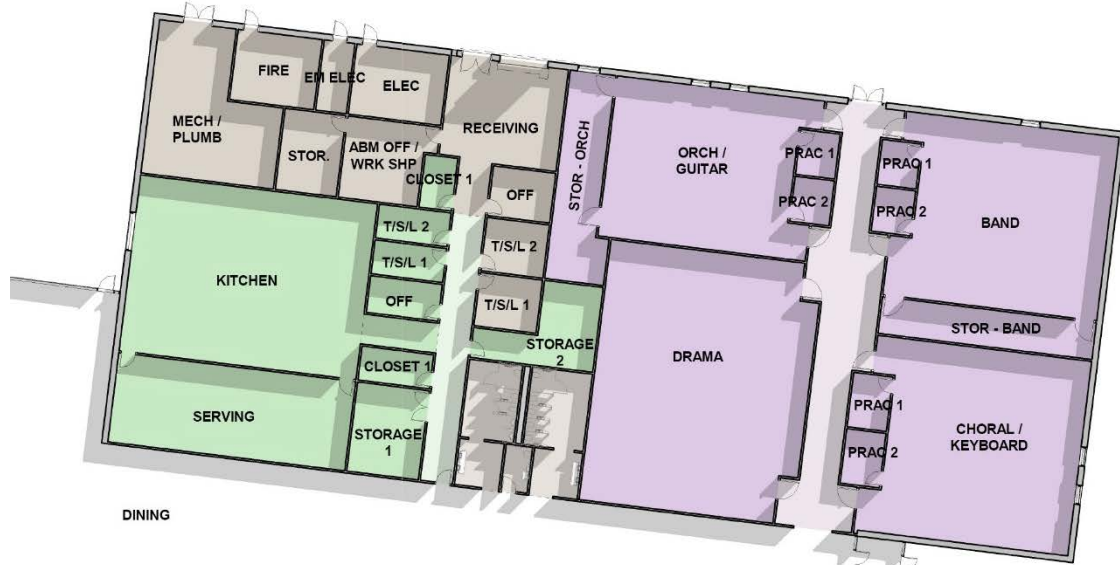
Floor Plans



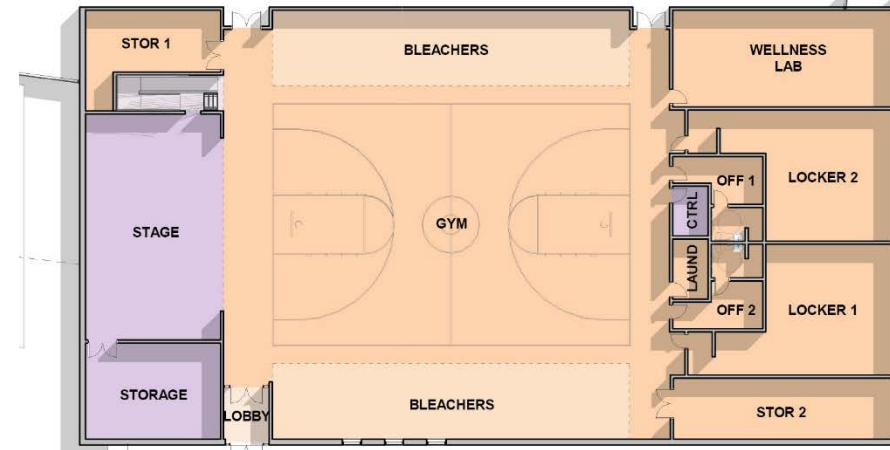
FIRST FLOOR



Gymnasium / Stage Arrangement



OPTION 1



OPTION 2

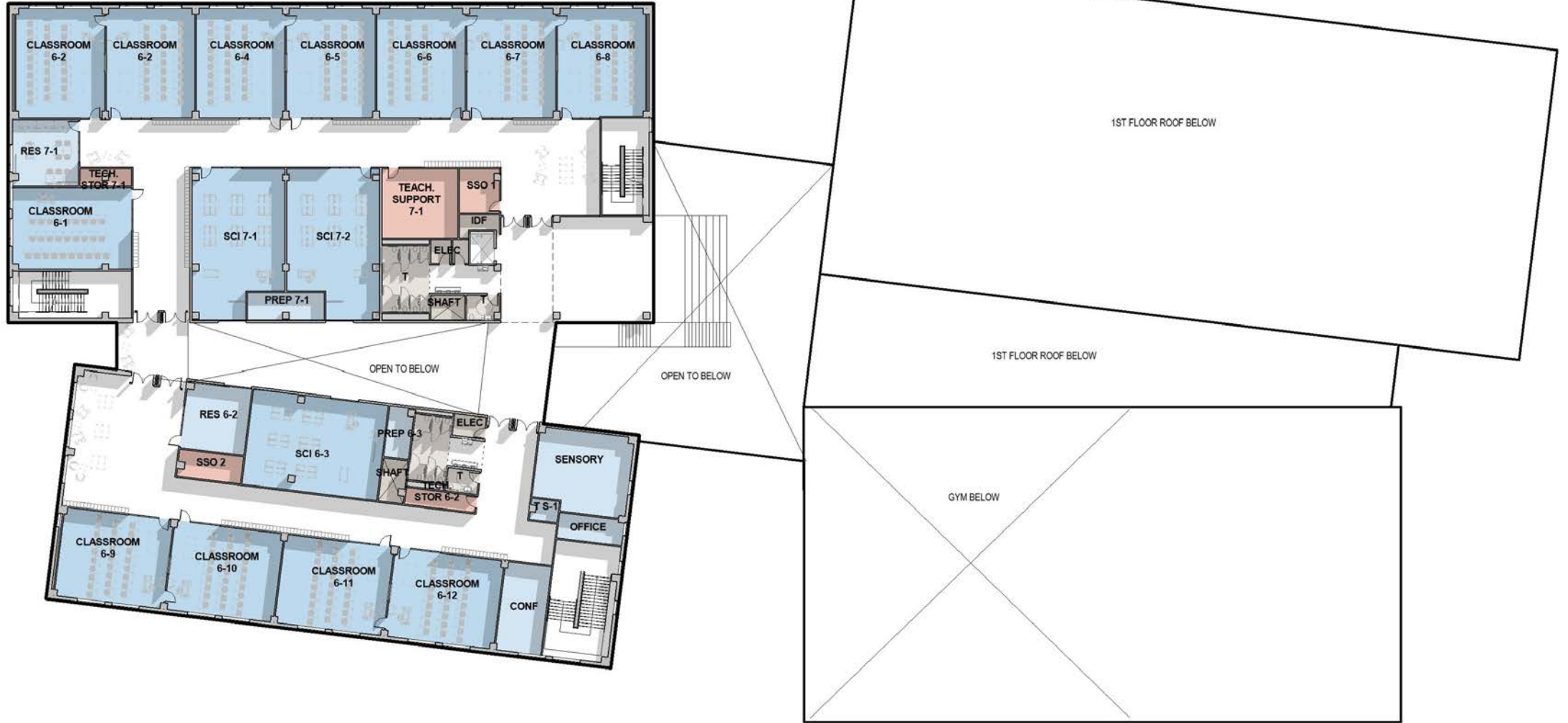


Updated Entry





Floor Plans



SECOND FLOOR



Floor Plans



THIRD FLOOR



FOURTH FLOOR



Hyattsville Middle School
Creative and Performing Arts



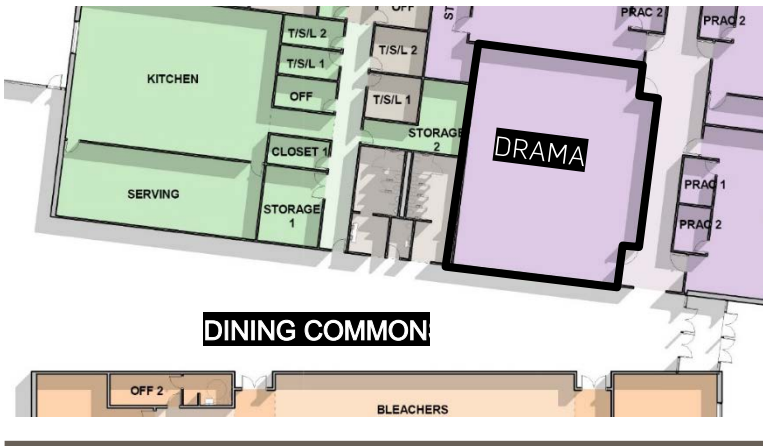
Performing Arts



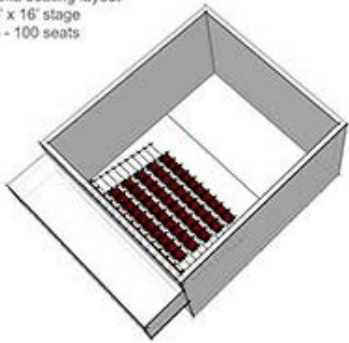
FIRST FLOOR



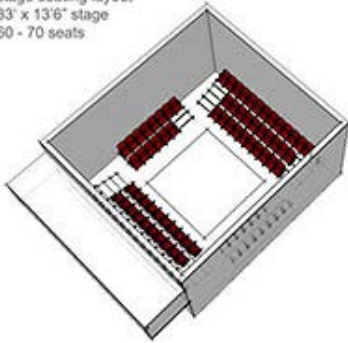
Performing Arts



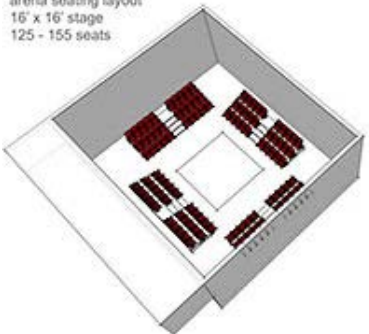
arena seating layout
16' x 16' stage
85 - 100 seats



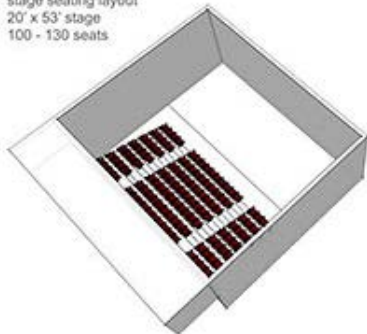
stage seating layout
33' x 13'6" stage
60 - 70 seats



control booth
arena seating layout
16' x 16' stage
125 - 155 seats

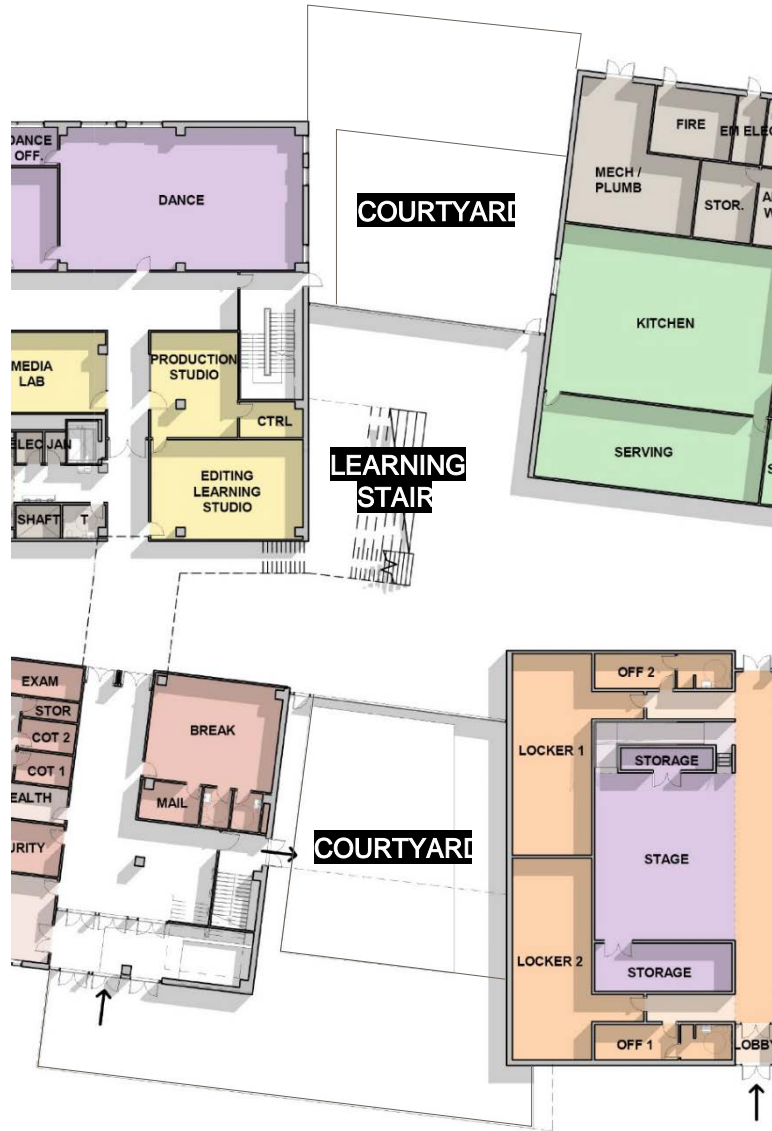


control booth
stage seating layout
20' x 53' stage
100 - 130 seats



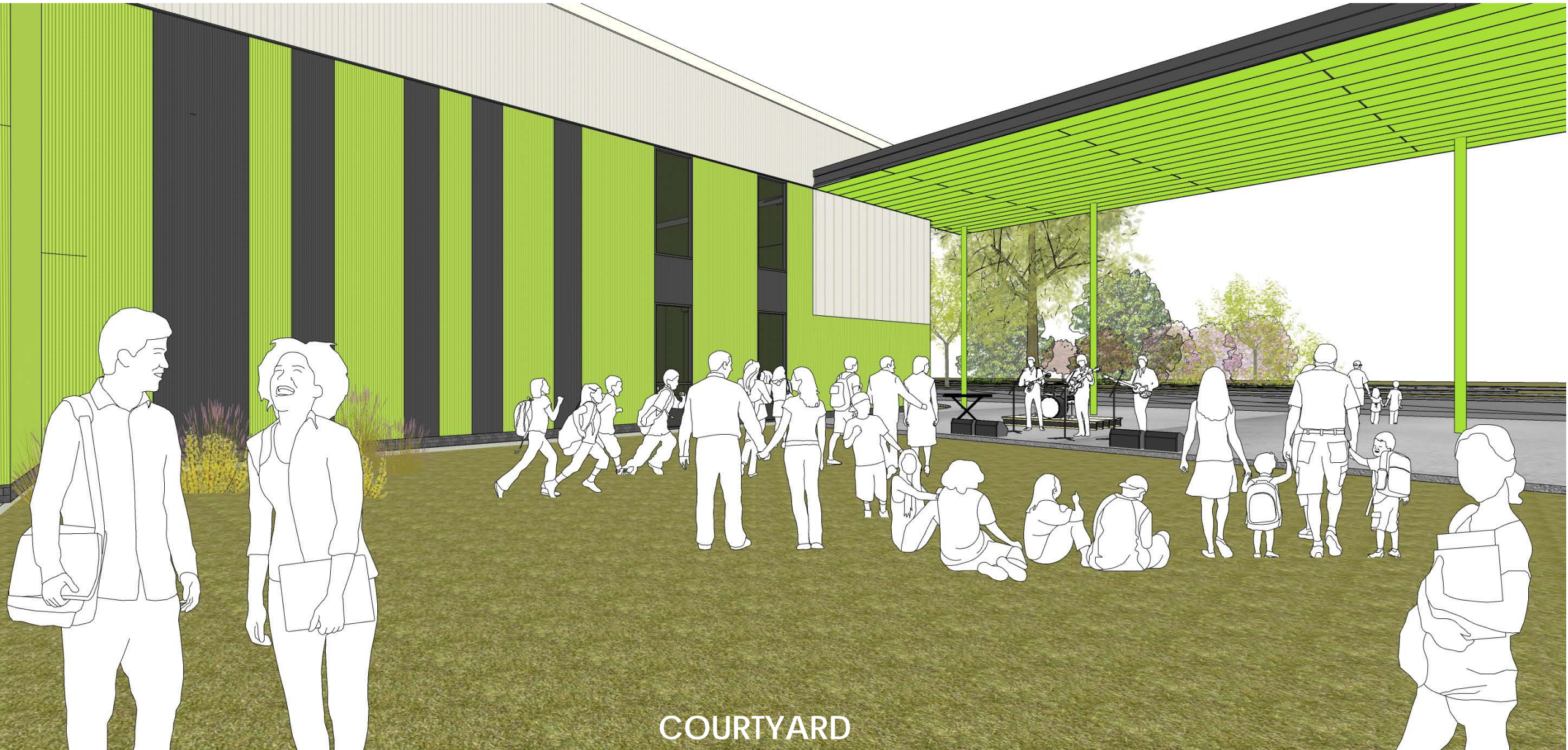


Performing Arts





Performing Arts



COURTYARD



**THANK YOU!
QUESTIONS?**