

Tree Canopy Coverage Worksheet for Sec. 25-128

Category	Credit per Tree Based on Size at Planting (in square feet)	Number of Trees	Total Credit
Deciduous - columnar tree (50' or less height)	1 - 1 1/2" = 40 2 - 2 1/2" = 50 3 - 3 1/2" = 75		0
Deciduous - small ornamental tree (20' or less height with equal spread)	1 - 1 1/2" = 75 2 - 2 1/2" = 100 3 - 3 1/2" = 125	33	2,475
Deciduous - medium shade tree (25-50' height with equal spread or greater; and over 50' height with less spread than height)	1 - 1 1/2" = 125 2 - 2 1/2" = 150 3 - 3 1/2" = 175		0
Deciduous - large shade tree (50' and greater ht. with spread equal to or greater than ht.; and trees 75' or greater ht.)	1 - 1 1/2" = 150 2 - 2 1/2" = 200 3 - 3 1/2" = 250	60	12,000
Evergreen - columnar tree (less than 30' height with spread less than 15')	6 - 8' = 40 8 - 10' = 50 10 - 12' = 75		0
Evergreen - small tree (30-40' height with spread of 15-20')	6 - 8' = 75 8 - 10' = 100 10 - 12' = 125		0
Evergreen - medium tree (40-50' height with spread of 20-30')	6 - 8' = 125 8 - 10' = 150 10 - 12' = 175	31	4,650
Evergreen - large tree (50' height or greater with spread of over 30')	6 - 8' = 150 8 - 10' = 200 10 - 12' = 250		0
TOTAL NUMBER OF TREES		124	
A. TOTAL SQUARE FOOTAGE IN PLANTED TREES =			19,125
B. TOTAL SQUARE FOOTAGE OF EXISTING TREES =			0
C. TOTAL TREE CANOPY COVERAGE PROVIDED =			19,125
D. TOTAL SQUARE FOOTAGE REQUIRED =			65,144

Note: The tree canopy coverage required on this site has been met using woodland conservation and landscaping (or just landscaping) as follows:
 Tree canopy coverage required: 1.5 acres or 65,144 SF (9.97 acres x 15%)
 Tree canopy coverage provided using woodland conservation: 0 acres
 Tree canopy coverage provided using landscaping: 0.44 acres or 19,200 SF
 Total tree canopy coverage provided: 0.44 acres or 19,200 SF

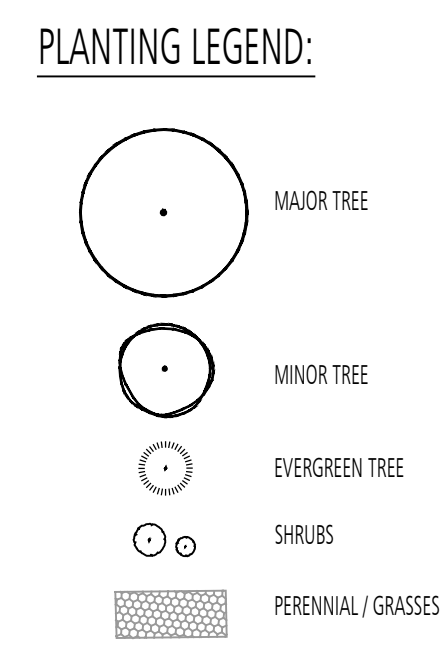
PLANT SCHEDULE:

Symbol	Quantity	Botanical Name	Common Name	Size	Notes
AR	5	<i>Acer rubrum</i>	Red Maple	2.5' Cal.	
LT	2	<i>Liriodendron tulipifera</i>	Tulip Poplar	2.5' Cal.	
NS	3	<i>Nyssa sylvatica</i>	Blackgum	2.5' Cal.	
PA	12	<i>Platanus x acenifolia</i>	London Planetree	2.5' Cal.	
QC	14	<i>Quercus coccinea</i>	Scarlet Oak	2.5' Cal.	
QM	10	<i>Quercus muhlenbergii</i>	Chinquapin Oak	2.5' Cal.	
UA	14	<i>Ulmus americana 'Valley Forge'</i>	American Elm	2.5' Cal.	

Symbol	Quantity	Botanical Name	Common Name	Size	Notes
AC	3	<i>Amelanchier canadensis</i>	Serviceberry	12' Ht.	3-5 Stems
AG	6	<i>Acer griseum</i>	Paperbark Maple	1.5' Cal.	
CF	6	<i>Cornus florida 'Cherokee'</i>	Flowering Dogwood	1.5' Cal.	
CV	7	<i>Chionanthus virginicus</i>	White Fringetree	12' Ht.	3-5 Stems
MV	5	<i>Magnolia virginiana</i>	Sweetgum Magnolia	12' Ht.	3-5 Stems
PS	6	<i>Prunus sargentii</i>	Sargent Cherry	1.5' Cal.	

Symbol	Quantity	Botanical Name	Common Name	Size	Notes
CJ	7	<i>Cydonia japonica</i>	Japanese Cydonia	8' Ht.	
IN	19	<i>Ilex x 'Nellie Stevens'</i>	Nellie Stevens Holly	8' Ht.	
JV	5	<i>Juniperus virginiana</i>	Eastern Red Cedar	8' Ht.	

Symbol	Quantity	Botanical Name	Common Name	Size	Notes
Aa	36	<i>Aronia arbutifolia 'Brilliantissima'</i>	Red Chokeberry	36' Ht.	#5 CG
Cs	77	<i>Cornus sericea 'Farrow'</i>	Redtwig Dogwood	24" Ht.	#3 CG
Ha	26	<i>Hydrangea arborescens</i>	Smooth Hydrangea	36" Ht.	#5 CG
Ig	42	<i>Ilex glabra 'Compacta'</i>	Inkberry	24" Ht.	#3 CG
Jc	22	<i>Juniperus chinensis 'Pfitzeriana Compacta'</i>	Compact Pfitzer Juniper	24" Ht.	#3 CG
Ra	8	<i>Rhus aromatica 'Gro Low'</i>	Fragrant Sumac	24" Sp.	#3 CG
Va	34	<i>Vaccinium angustifolium</i>	Lowbush Blueberry	24" Ht.	#3 CG

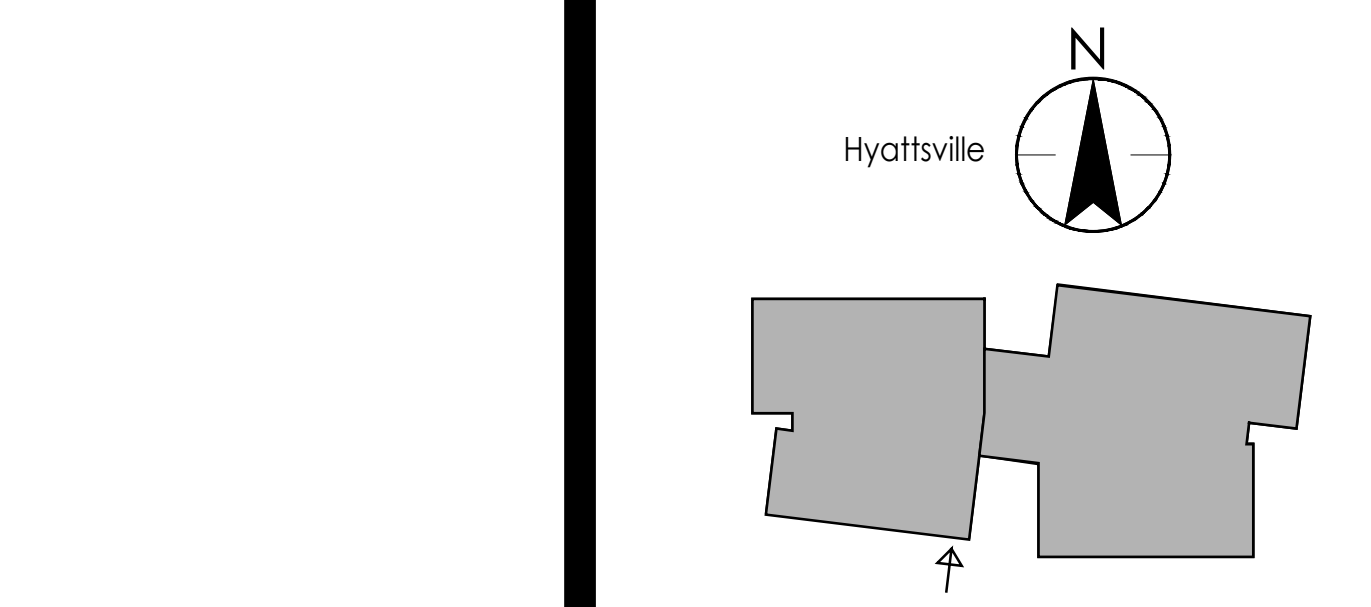


KEY NOTES:

SYMBOL	ITEM TYPE	NOTES	REFERENCE
C-1	LAWN	SEED	
C-2	PERIMETER FENCE / SCREEN		
C-3	SWM PLANTING	REFER TO CIVIL FOR PROFILE	

SYMBOL	PAVER TYPE	NOTES	REFERENCE
P-1	SAWCUT CONCRETE	PROVIDE PATTERN AS SHOWN	
P-2	CONCRETE PAVERS	6X18 RUNNING BOND AS SHOWN	
P-3	BONDED GRAVEL	INCLUDE METAL EDGE RESTRAINT WHERE NOT BOUNDED BY OTHER METHOD.	
P-4	ARTIFICIAL TURF	SPORT FIELD GRADE	

Guidelines (includes Existing and Proposed Plantings)	Calculated Units	Provided Units
Shade Trees (10 PU per 1 shade tree)	11	110
Shrubs (1 PU per 1 shrub)	53	53
Ornamental Trees (5 PU per 1 ornamental tree)	14	70
Evergreen Trees (5 PU per 1 evergreen tree)	9	45
Total Trees Provided	87	
Total PU's Provided		278



1 PLANTING PLAN

LANDSCAPE SCHEDULE 4.2
CONDITION FOR LANDSCAPE STRIPS ALONG STREETS WITH RESIDENTIAL USES

Guidelines	Calculated Units	Provided Units
LINEAR FEET OF STREET FRONTAGE	2,043 L.F.	
Shade Trees	68	79
Shrubs / Perennials	1,022	219 shrubs
Existing Trees	N/A	0
Total Provided	TOTAL	PROVIDED
Shade Trees	68	79
Shrubs / Perennials	1,022	0

LANDSCAPE SCHEDULE 4.3
CONDITION FOR PARKING REQUIREMENTS

Guidelines	Calculated Units	Provided Units
LINEAR FEET OF PARKING LOT WITHIN 30' OF ROADWAY	0 L.F.	
LINEAR FEET OF LANDSCAPE STRIP PROVIDED	0 L.F.	
LINEAR FEET OF MECHANICAL EQUIPMENT AREA	170 L.F.	
LINEAR FEET OF TRASH/DUMPSTER AREA	68 L.F.	
SQUARE FEET OF PARKING LOT AREA	84,683 S.F.	
SQUARE FEET OF INTERIOR PLANTING AREA REQ.	8,469 S.F.	
Shade Trees	28	14
Existing Trees	N/A	0
Total Calculated	28	14
Total Provided		14

LANDSCAPE SCHEDULE 4.4
CONDITION FOR SCREENING

Guidelines	Calculated Units	Provided Units
SCREEN WALL (L.F.)	47	165
Evergreen Screen (L.F.)		15
Total Calculated	238	180
Total Provided		180

FTLA_L300_OVERALL LANDSCAPE PLAN.dwg
SCALE: 1" = 30'-0"



Copyright Reserved
 The Contractor shall verify and be responsible for all dimensions. DO NOT scale the drawing - any errors or omissions shall be reported to Stantec without delay.
 The Copyrights to all design and drawings are the property of Stantec. Reproduction or use for any purpose other than that authorized by Stantec is forbidden.

Consultant
FLORA TEETER
 landscape architects
 800 North Charles St. Ste. 300
 Baltimore, Maryland 21201
 Phone: 410.528.8395
 Fax: 410.528.8425

Permit/Seal
PRELIMINARY NOT FOR CONSTRUCTION
 Not for permits, pricing or other official purposes. This document has not been completed or checked and is for general information or comment only.



Project No. 000000000
 Project-site Identification: 4-STORY MIDDLE HYATTSVILLE
 Drawing No. L.01-H
 Scale: 1" = 30'