



David C. Driskell Community Park

Phase 2: Design Development

**the
Neighborhood
DesignCenter**

**BRADLEY
SITE
DESIGN**

UrbanBiology LLC 
design + planning for a living world

 **MICHAEL
MARSHALL
DESIGN**

Project Overview

- **Goal:** Develop detailed designs for the renamed park, bringing forward the selected concept from Reimagining Magruder Park with new programming & park elements, based on the life work of artist David C. Driskell.
- **Deliverables:** Set of design drawings coordinated to meet the City's phasing goals, at a level of detail suitable for robust costing and nearing a permit-ready level for the landscape design.





Project Team

Neighborhood Design Center

Project management, community engagement & storytelling

Bradley Site Design

Landscape design, civil & site engineering, materials selection

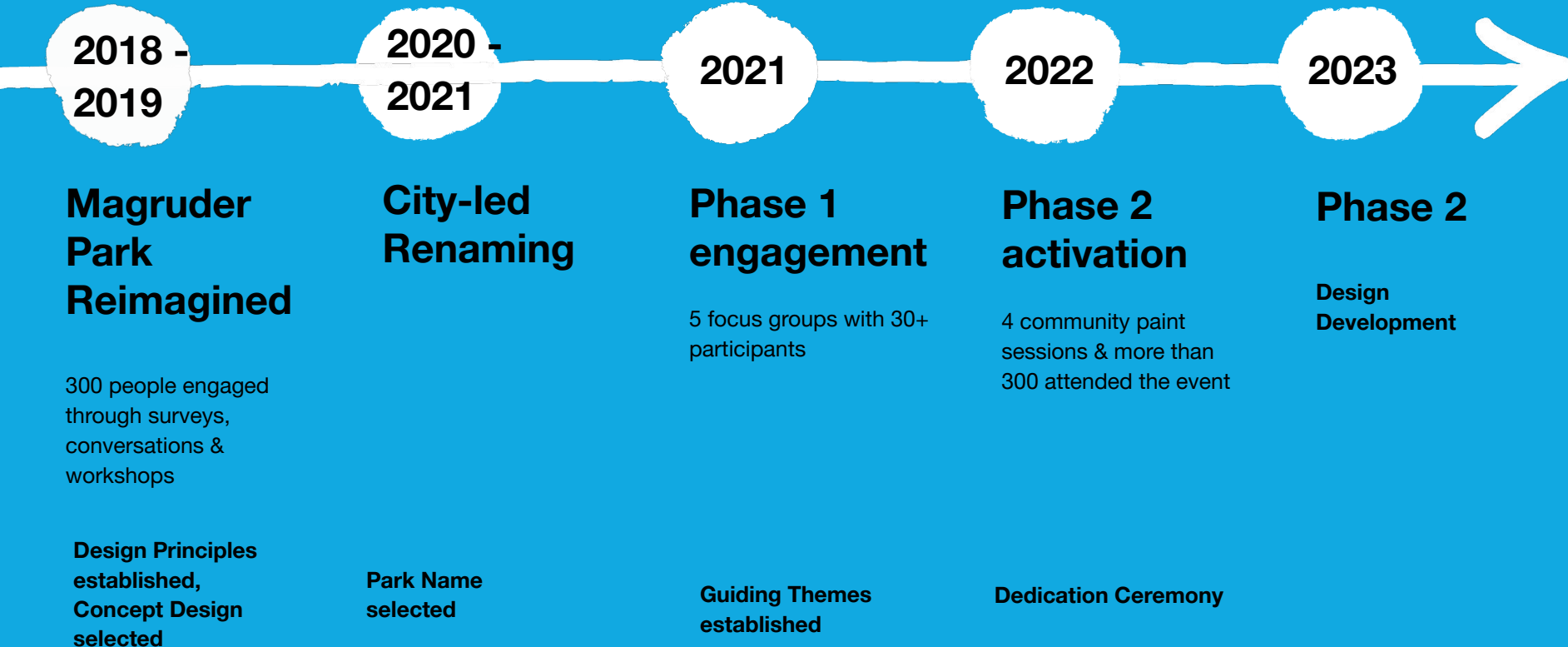
Urban Biology

Design, programming & landscape management

Michael Marshall Design

Architectural and interior design, MEP engineering

Project Timeline





Magruder Park Reimagined

Design Principles

- Create a welcoming space for all
- Design with teens in mind
- Design with and for the natural environment
- Create safe entry points and paths for people walking, running, riding bikes, and driving cars.





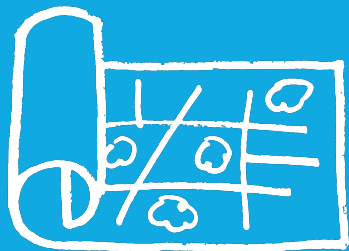
Park Rededication



credit "Eric Thompson, Thompson Photography"



credit "Eric Thompson, Thompson Photography"



Guiding Themes

David C. Driskell Community Park
will be:

A place for discovery and creativity

A place where everyone belongs

A place for contemplation in nature

A place where everything has value

A place where barriers are broken

Project Phases

1

Analysis

Environmental analysis, park user analysis, agency coordination

2

Design Concept Refinement

Community workshops and site walks, Landscape & placemaking design elements

3

Design Development

Landscape design development, , architectural schematic design, park programming, planting designs

Community Engagement

Updated Park User Analysis

Building on our work from 2018, we will update our assessment of who is using the park, for what, and when through interviews. We will investigate differences we observe in the data as well as what groups are not using the park.

Site Walks

Continuing the work from the Rededication, the team will share the guiding themes identified. With residents, we will assess and refine the design concept developed in previous work.

Workshops

Residents will be engaged in workshops to understand preferences for landscape elements, placemaking elements, community center visual language, and stormwater management concepts.

Design Presentation

Schematic designs and community priorities will be communicated via public design presentation. Feedback will be collected to inform final designs.

