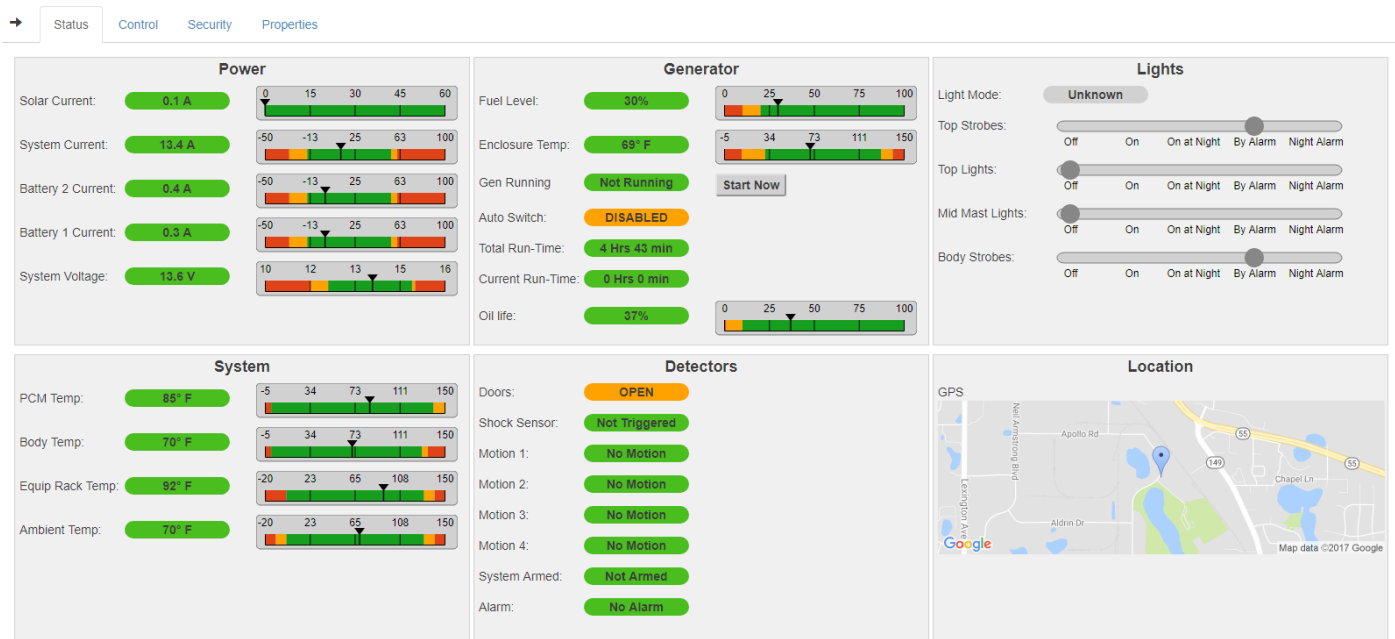


MOBILE PRO STATUS AND CONTROL

Mobile Pro Systems engineers and manufactures security, surveillance, and communications equipment for remote applications. Featuring rugged construction, smart energy management, and modular design, our products help protect private and public spaces across the country.

Mobile Pro Status and Control is the operating system for Mobile Pro Systems trailers, camera pods, and portables. The MPStatus Dashboard shows real-time data about Mobile Pro Systems equipment. The dashboard is accessible by computer, tablet, or smartphone.

- A **Basic version**, included free with all Mobile Pro Systems products, shows current unit status and provides account management functions.
- A **Premium version**, available by paid subscription, includes all Basic version features, and adds valuable control and configuration abilities.



MOBILE PRO STATUS AND CONTROL

BASIC FEATURES

Status

Information displayed by the MPStatus Dashboard is specific to the product type and installed components. Depending on the configuration, the MPStatus Dashboard may show:

- System Voltage—Shows voltage available from all power sources; provides useful information for determining consumption rates, charge requirements, and runtimes
- Battery Current—Displays battery charge and discharge rates in amps, watts, and percentage of available capacity
- System Current—Shows how much current the system is using, plus estimated runtime
- Fuel Level—Displays current fuel level, usage rate, and estimated runtime until refueling
- Generator Status—Shows if the generator is running, disabled, or monitoring the system
- Generator Runtime—Shows total generator runtime and runtime since last oil change
- Temperatures—Displays temperatures of the enclosure, the power control module, and the surrounding (ambient) environment, generator cabinet, and equipment rack
- GPS Location Data—Shows current location of the device; premium version can send notification if the system is moved
- Account Management—Allows the creation of multiple user account, including Admin/User accounts

PREMIUM FEATURES

The premium version of MPStatus Dashboard includes all features of the basic version plus these functions:

Control

- Devices—Provides control of top lights, mid lights, top strobes, body strobes, and audio
- Components—Allows user to control and cycle power to individual system electronics
- Unit Security—Provides ability to remotely arm or disarm the unit

Notifications

Alerts—Lets user set automated notifications for events such as:

- Fuel Level: when it reaches 20 percent
- Motion Sensor: if movement is detected on site
- Shock Sensor: if the unit is bumped or moved
- Tampering: any unauthorized opening of the unit
- Email and Text Messages—Lets users set preferences for when and how they receive notifications

Mobile Pro Systems products are designed and built for ease of use, practicality, quality, and value—and the MPStatus Dashboard makes them even more versatile. This remote status monitoring and control software provides critical device information in real time.

To learn more about our trailers, power sentries and other portable products, contact Mobile Pro Systems:

651-434-2333
Info@MobileProSystems.com

651-434-2333

3150 Mike Collins Drive, Suite 200, Eagan, MN 55121

www.mobileprosystems.com

