

Prince George's County Public Schools  
Hyattsville City Council Presentation

# HYATTSVILLE MIDDLE SCHOOL

April 5, 2021



PGCPS



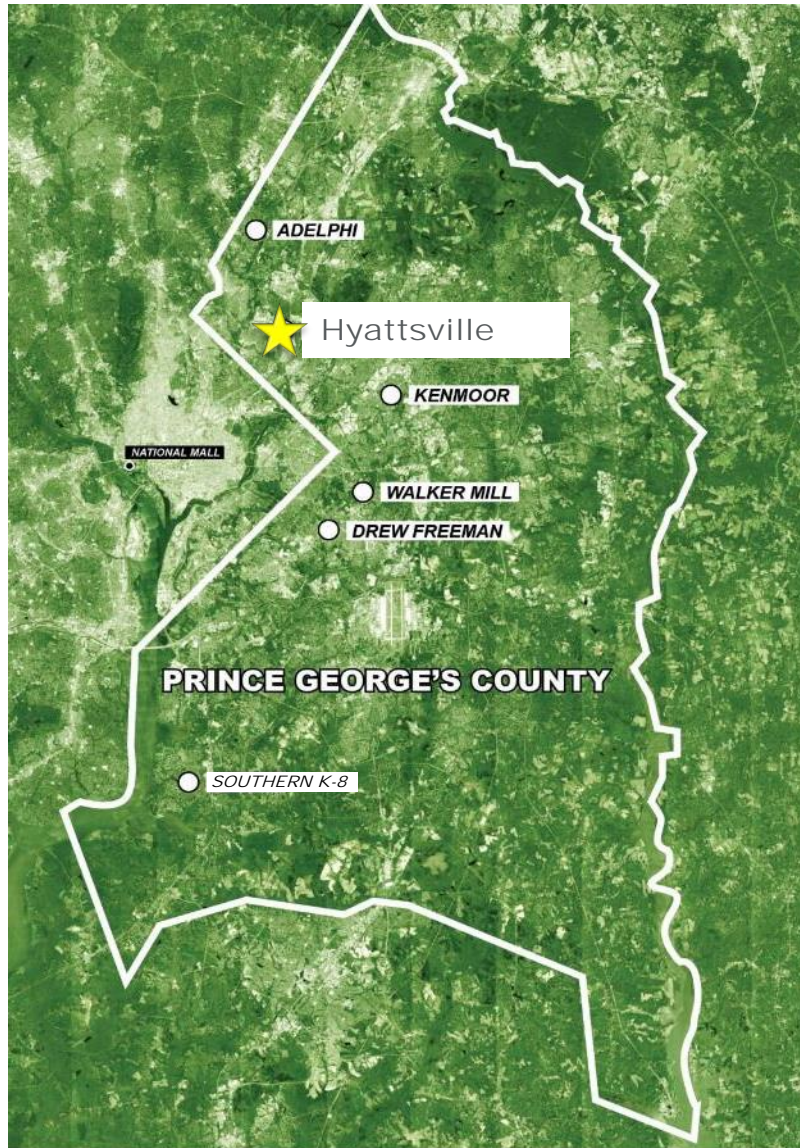
PRINCE GEORGE'S COUNTY  
EDUCATION & COMMUNITY PARTNERS

Important Notice: This document contains confidential information proprietary to Gilbane Building Company, including but not limited to trade secrets and/or copyrighted material. Any unauthorized disclosure, duplication, or use – in whole or in part – of such confidential information for any purpose is strictly prohibited. All rights reserved by Gilbane Building Company.



# Project Overview: **Blueprint School Program**

---



## **Design-Build-Finance-Maintain (DBFM) Program**

- Six New Schools
  - Five - 1,200 student middle schools
  - One - 2,000 student K-8
- 3 Year Design-Build Phase (2020 – 2023)
- 30 Year Building Maintenance Period (2023 – 2053)
- **Hyattsville Middle School Site Selection**

# Project Overview: **Blueprint School Program**

---



## **Town Hall Meetings**

- ✓ On-going town halls provided for each school community.
- ✓ Presentations will include project and community impact updates.
- ✓ Participants' questions are addressed during the meeting; all follow-up materials/additional info is provided on the program website:  
[www.pgcpsschoolsnow.com](http://www.pgcpsschoolsnow.com)



## **Project Planning Committees (PPC)**

- ✓ PPC teams are representative of individual school communities, selected and led by school principals.
- ✓ PPCs will use their community and school-based expertise to inform design and actively participate in each phase of the design-build period.
- ✓ Feedback loop provides opportunities for PPCs to provide guidance and support the advancement of the school design.



## **Community Investment**

- ✓ PGCECP will provide monthly MBE/CBB outreach and pre-certification events.
- ✓ Community investment opportunities and program updates will be shared at town halls, with the PPCs and on the program website.



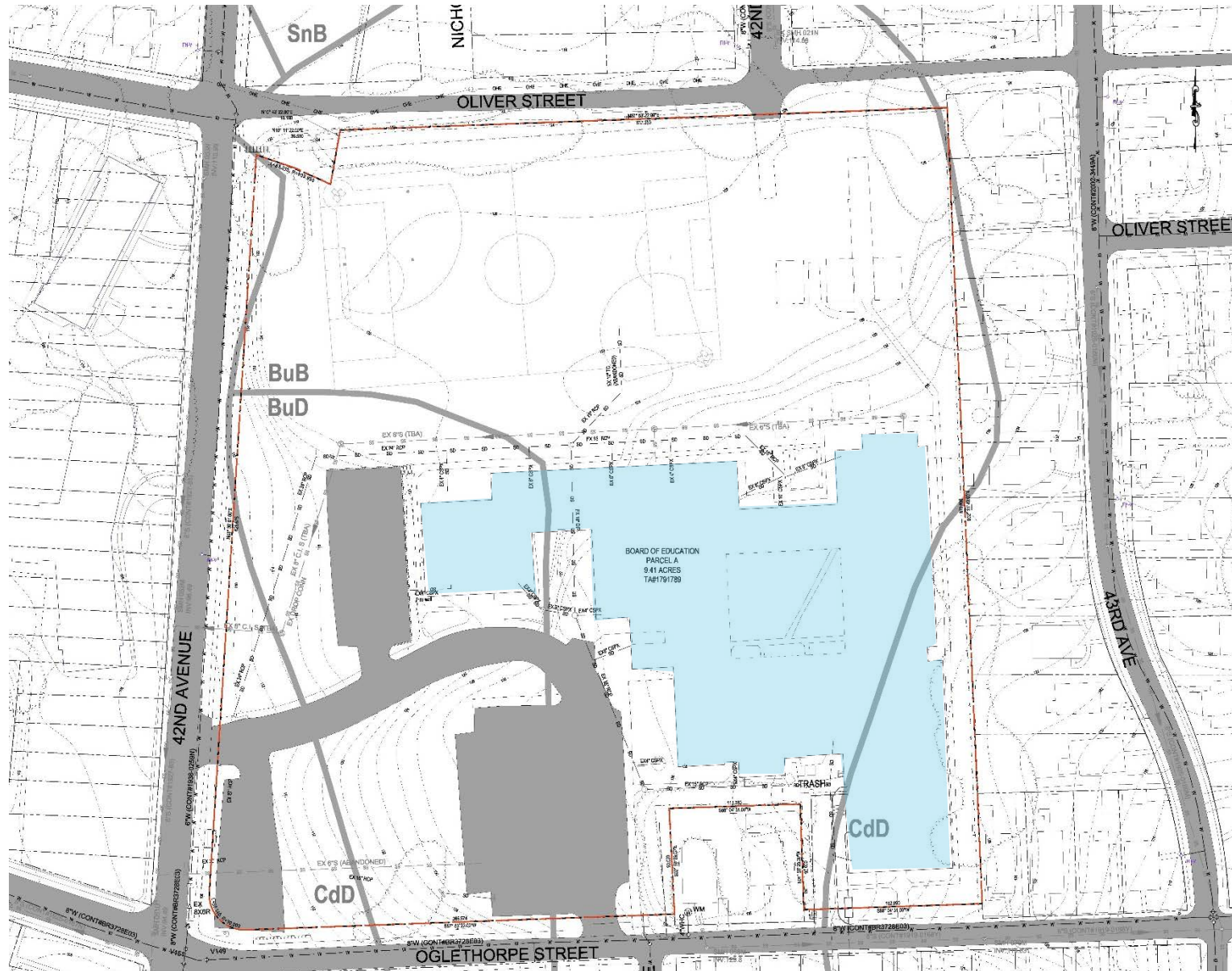


# Location of site





# Existing Site Plan

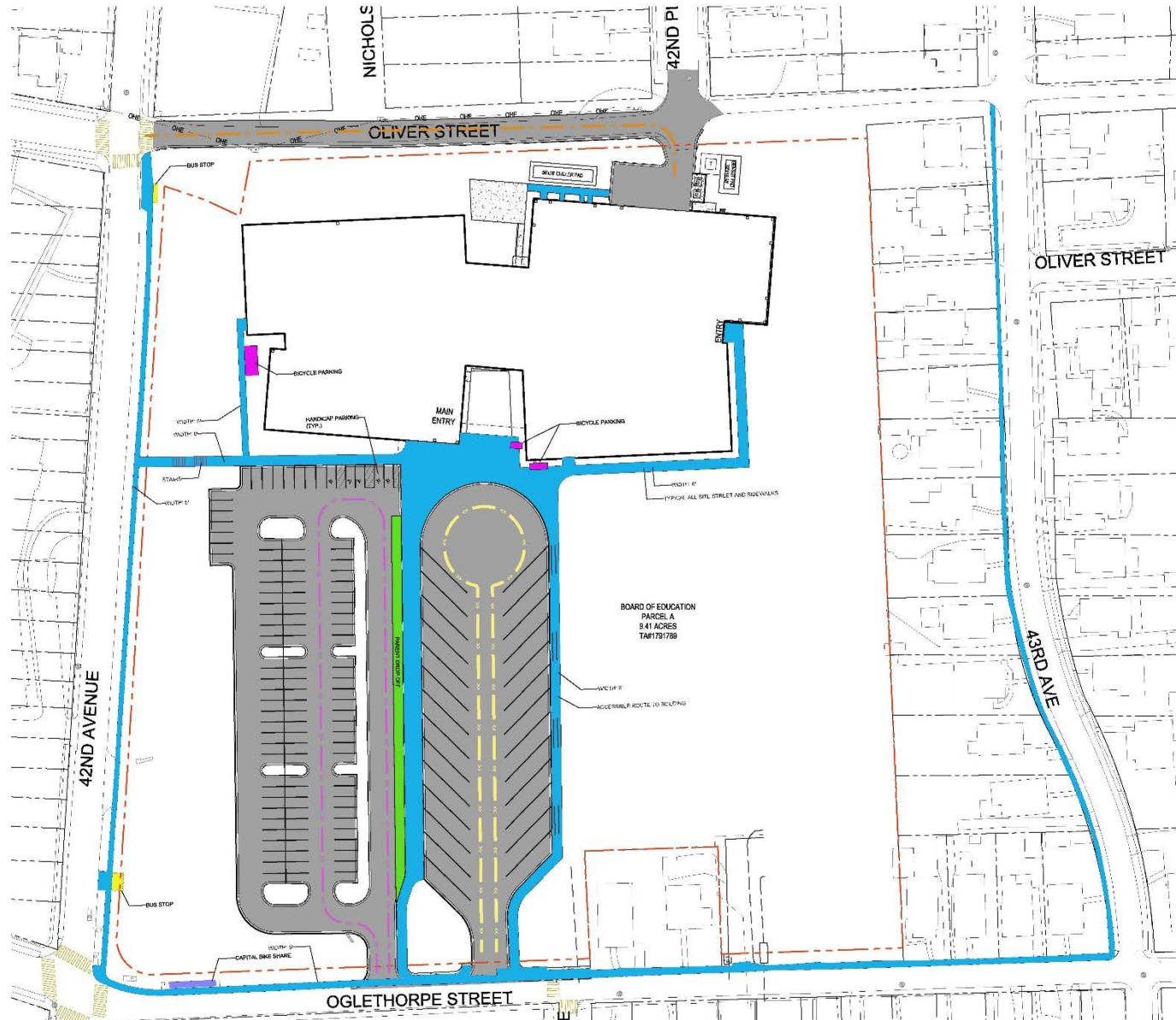


# Proposed Site Plan





# Site Circulation Plan

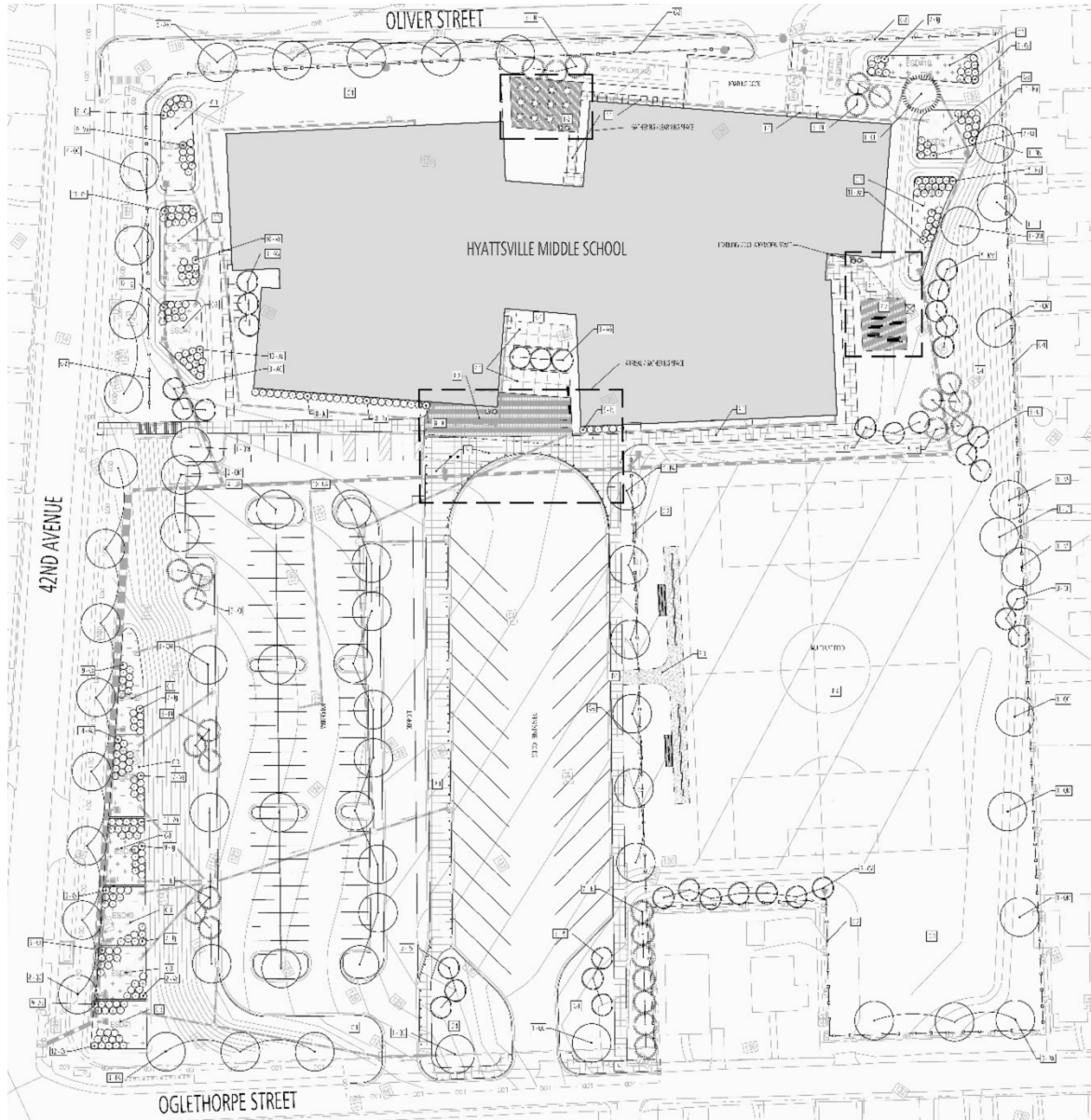


## LEGEND

- PEDESTRIAN AND BICYCLE CIRCULATION
- PARENT DROP-PFF
- DRIVEWAY
- SCHOOL BUS CIRCULATION
- PASSENGER CAR CIRCULATION
- PROPERTY LINE
- SERVICE VEHICLE ACCESS
- BUS STOP
- CAPITAL BIKE SHARE
- PEDESTRIAN CROSSING
- BICYCLE PARKING
- HANDICAP PARKING
- STAIRS

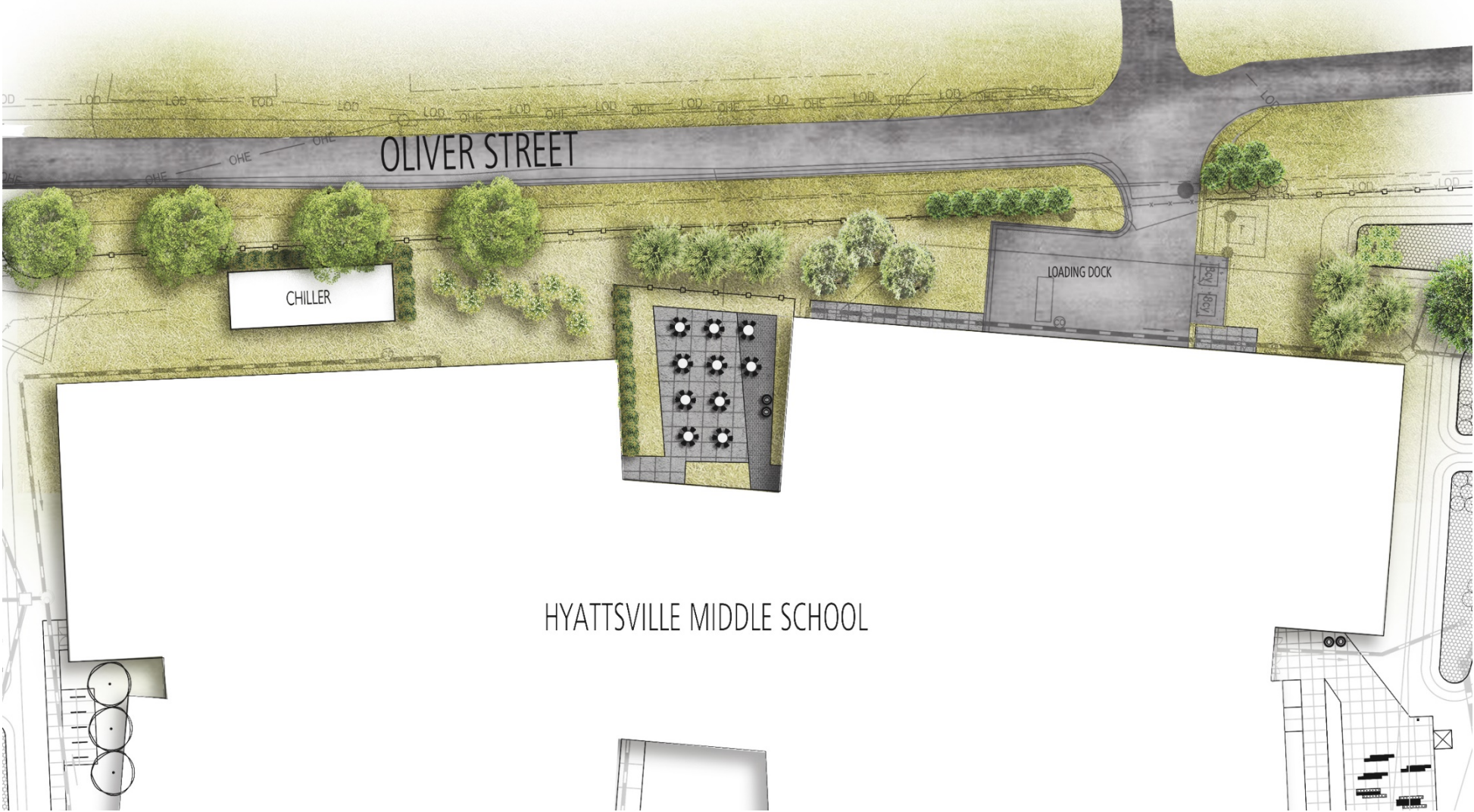


# Landscape Plan





# Landscape Plan – partial enlarged





# Building Plans



FOURTH FLOOR PLAN



THIRD FLOOR PLAN



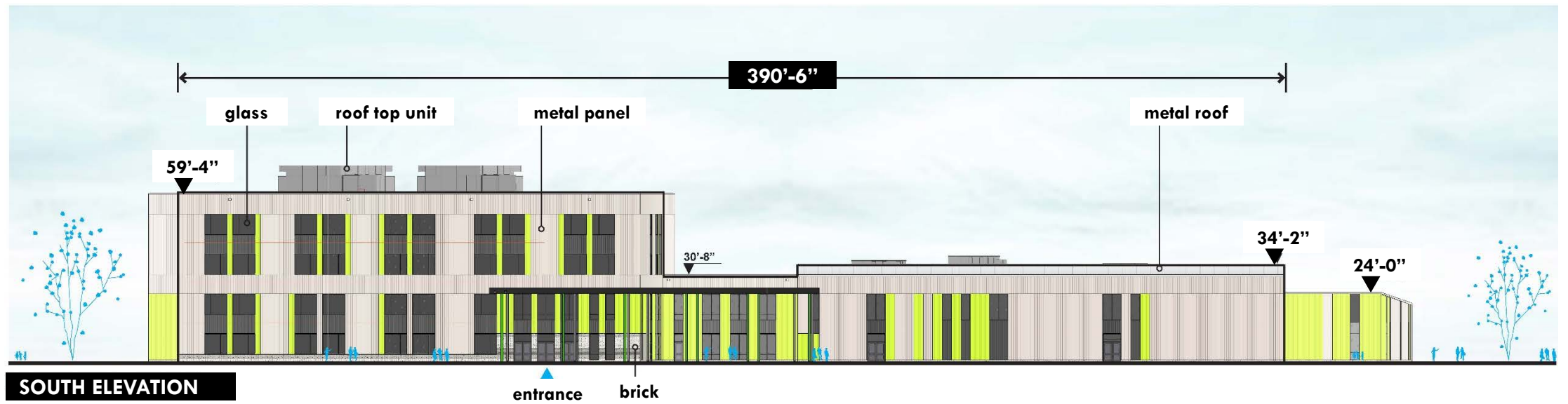
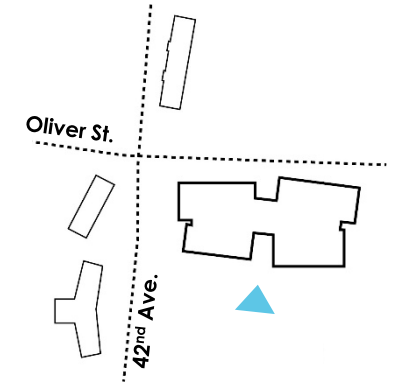
SECOND FLOOR PLAN



FIRST FLOOR PLAN

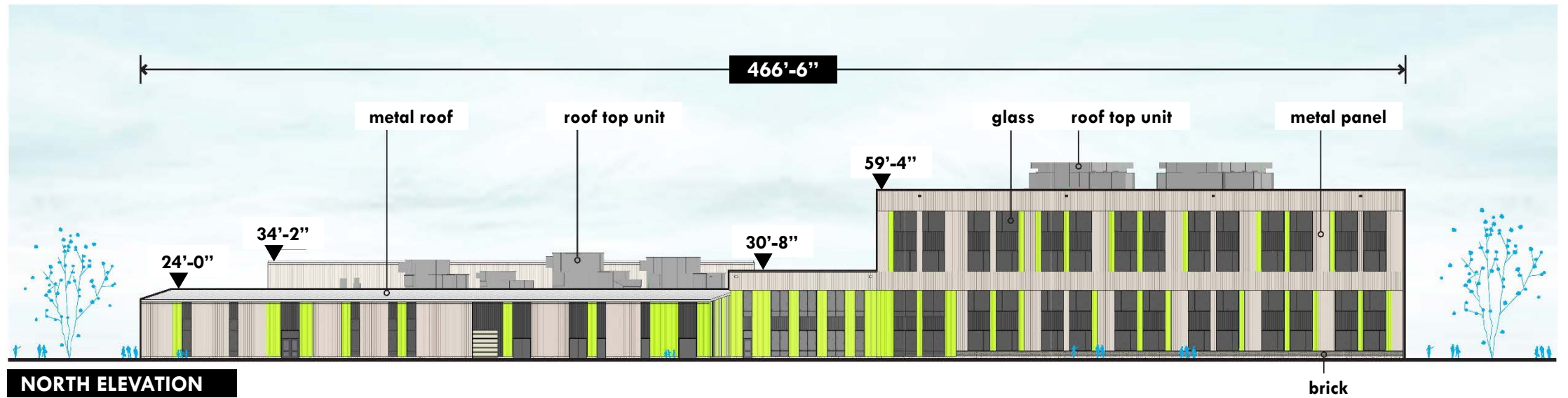
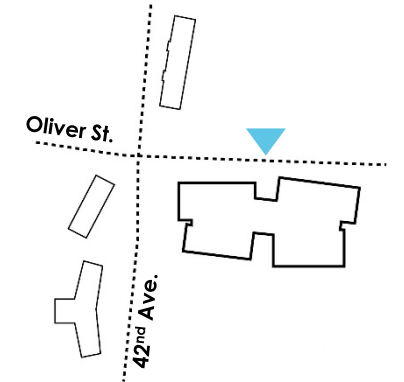


# Building Elevations

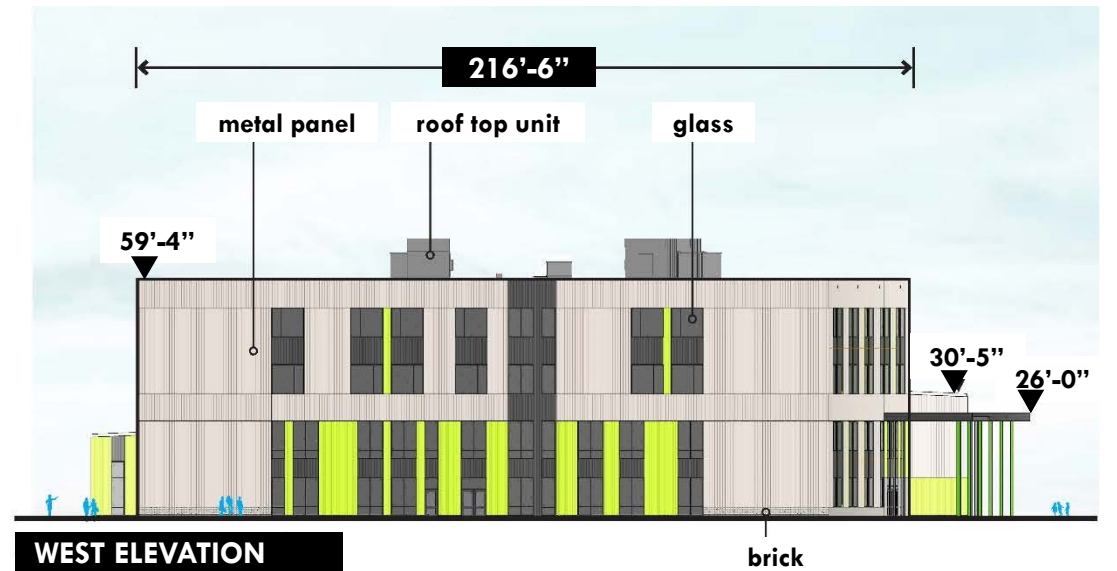
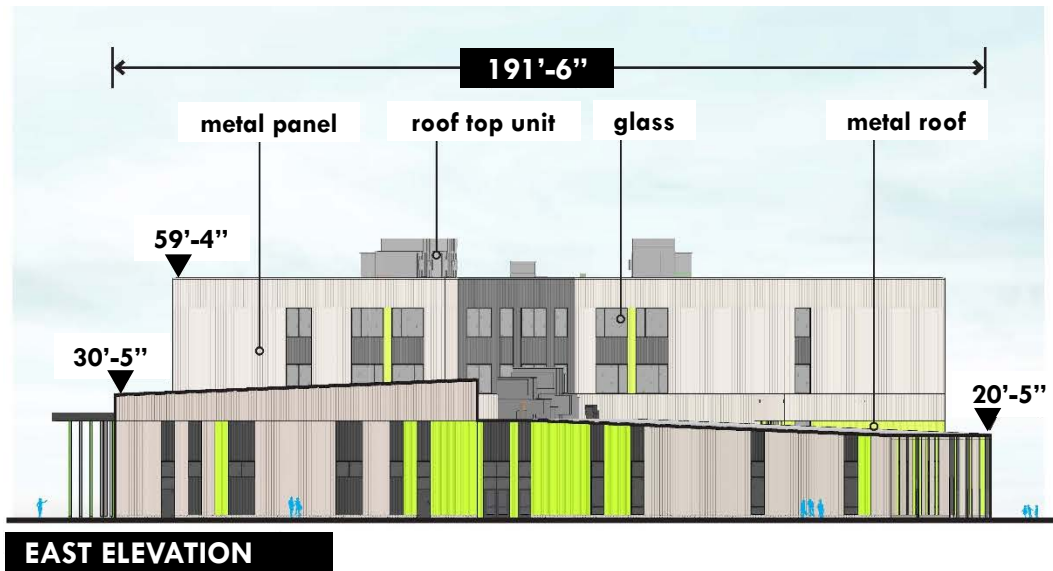
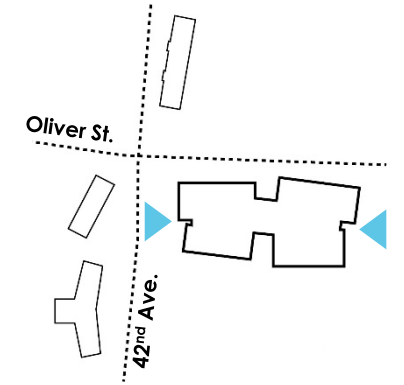




# Building Elevations



# Building Elevations





# Building Views: front entrance

---





# Building Views: 42<sup>nd</sup> PI and Oliver St.

---





# THANK YOU

Questions: [jason.washington@pgcps.org](mailto:jason.washington@pgcps.org)



PRINCE GEORGE'S COUNTY  
EDUCATION & COMMUNITY PARTNERS