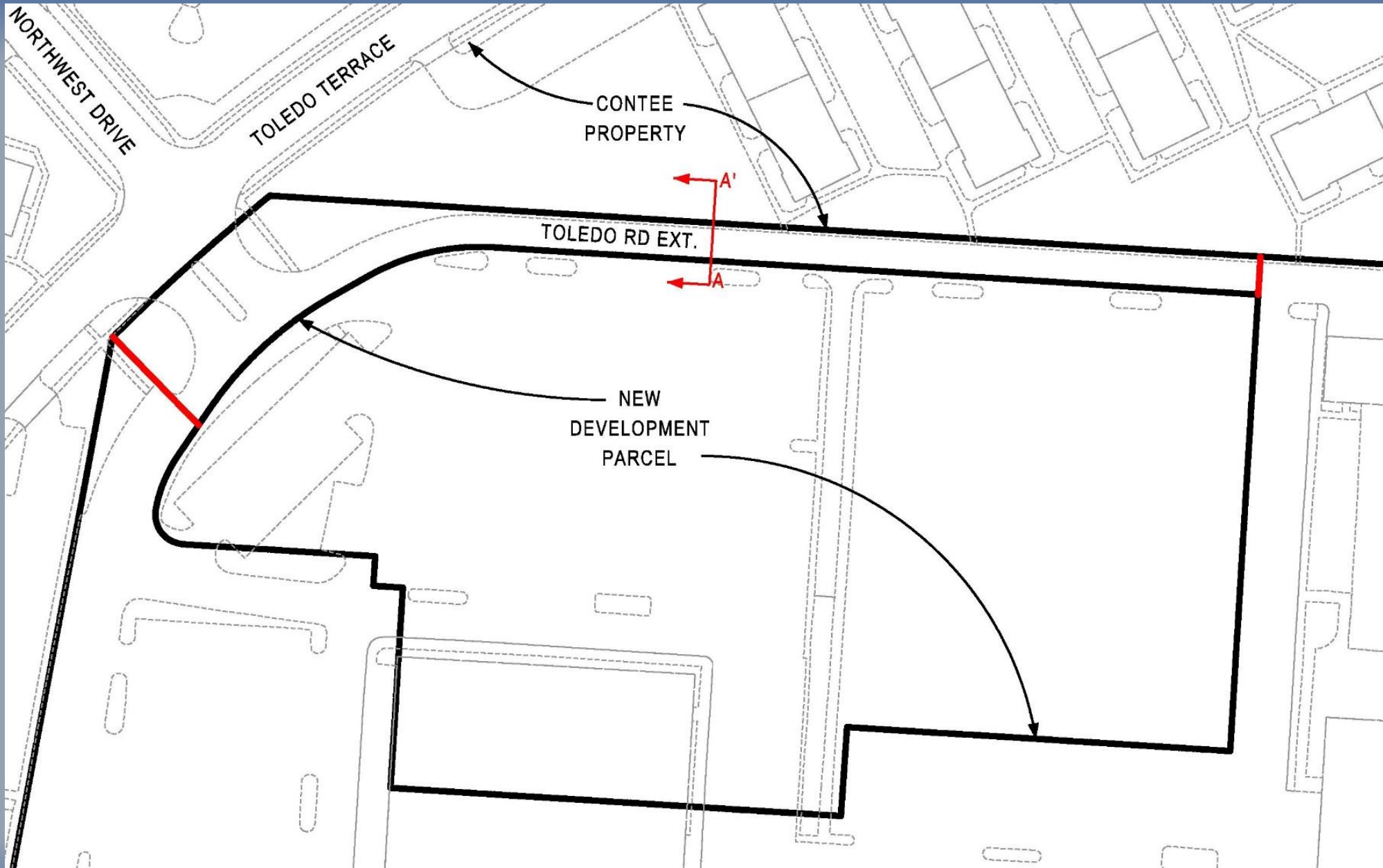
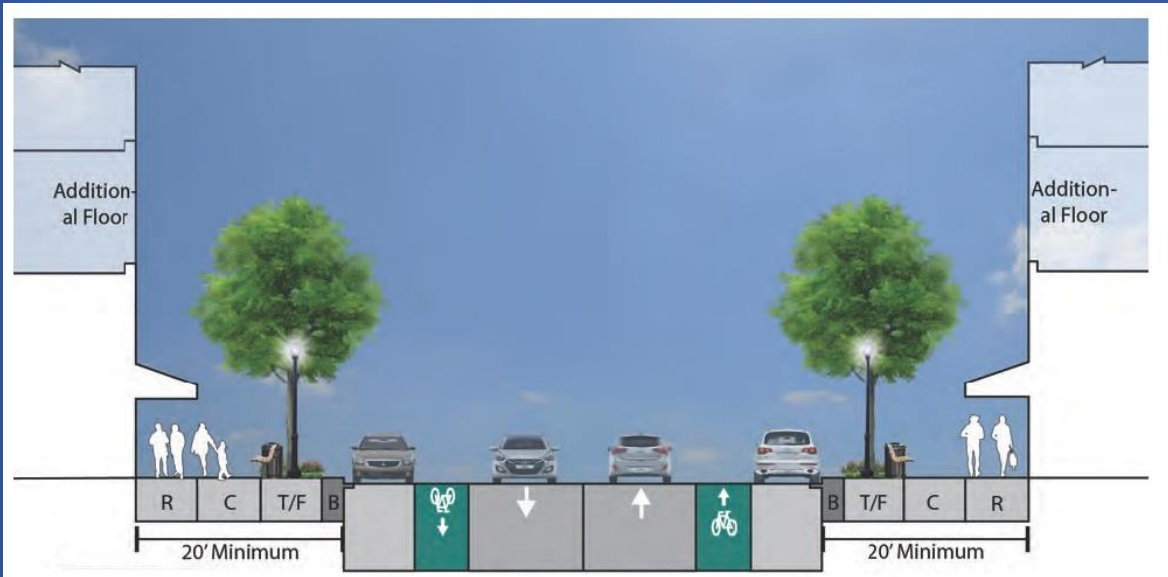




**Avalon Bay-Site Context**



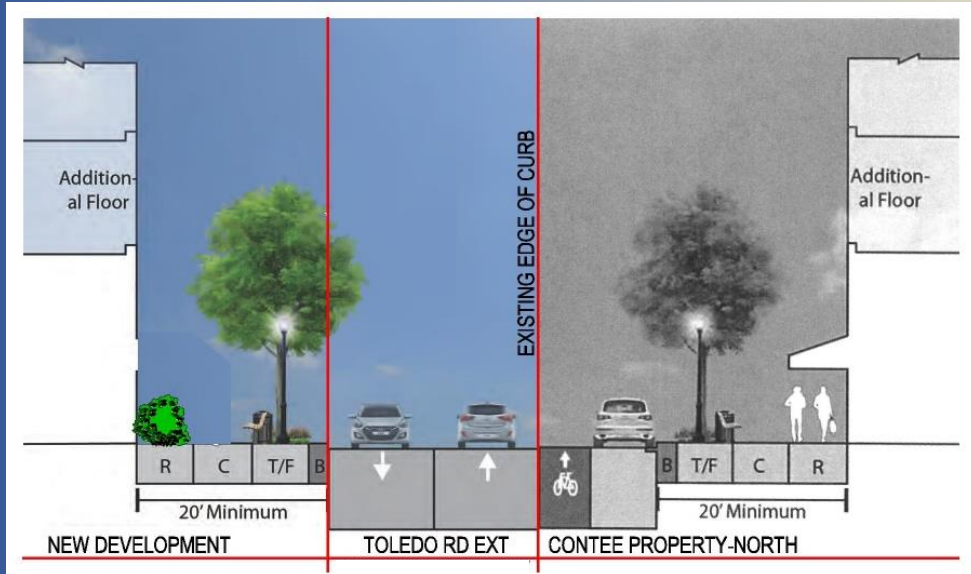
**Avalon Bay-New Road Location**



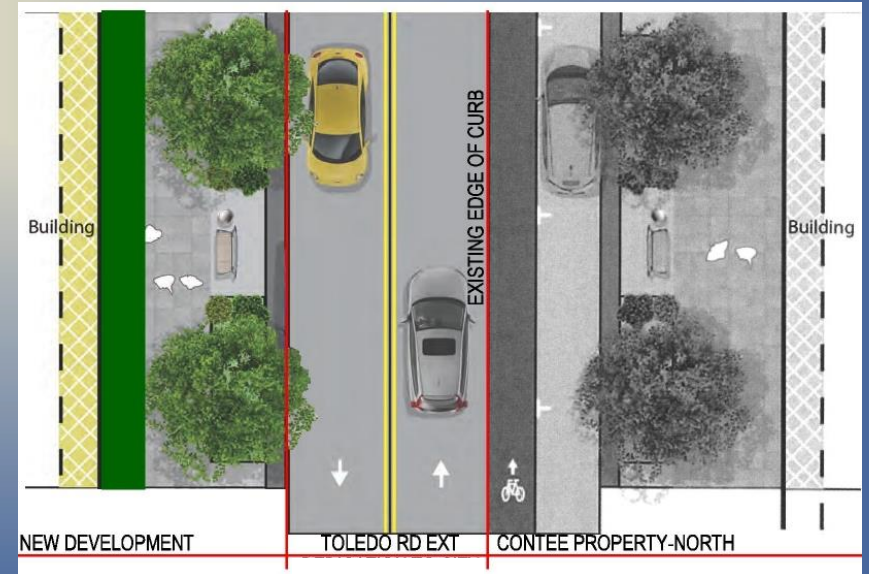
**Figure 13 Toledo Road Extended-Street Section**



**Figure 13 Toledo Road Extended -Plan View**



**New Development-Proposed Street Section**



**New Development-Proposed Street -Plan View**

**Avalon Bay-Road Exhibit-Section & Plan**



**PROPOSED  
PARCEL 2**  
5.1147 AC. OR  
222,796 SQ. FT.  
360 MULTIFAMILY  
1,000 SF. RETAIL

WSSC ESMT  
L. 3047 F. 435  
PT 1

52,822 SQ. FT.  
RETAIL TO BE REMOVED

WSSC ESMT  
L. 8038 F. 524  
PT 1