



ROBERT J. KING MEMORIAL PARK

City Council Meeting | September 18, 2022

Overview



Phase 1. Community shared ideas.



Phase 2. Input reviewed; rough concept prepared.



Phase 3. Community review of initial concept.



Phase 4. Final design prepared

Considerations

- Park:
 - Serve local neighborhood needs
 - Multi-functional
 - Gathering spaces
- Playground:
 - Maintain existing footprint
 - Landscaped and open space
- Playground Equipment:
 - Fire truck
 - Age range
- Other:
 - Drainage



- 1 Park entrance + wayfinding
- 2 Stroller parking
- 3 ADA accessible path
- 4 Native vegetation
- 5 Park art (future phase)
- 6 Nature-inspired playground
- 7 Shaded seating
- 8 Picnic seating
- 9 Relocated fire truck
- 10 Reading garden
- 11 Native plant interpretive sign



Low Impact
Development
Center

CITY OF HYATTSVILLE ROBERT J. KING MEMORIAL PARK CONCEPT DESIGN INSPIRATION 4200 Gallatin St, Hyattsville, MD 20781



1
WAYFINDING



2
STROLLER PARKING CHAIN LOCK



2
STROLLER PARKING SIGNAGE



3
ADA PATHWAY PAVERS



4
NATIVE VEGETATION



4
LOW- ORNAMENTAL FENCING



4
PLANT ID MARKER



4
"DON'T STEP" MARKER



5
PARK ART (Future Phase)



6
NATURE-INSPIRED PLAY



7
STYLIZED WAVE BENCH (GREEN)



8
PICNIC SEATING



9
RELOCATED FIRE TRUCK



10
CURVED READING BENCH



10
GARDEN PATH STEPPERS



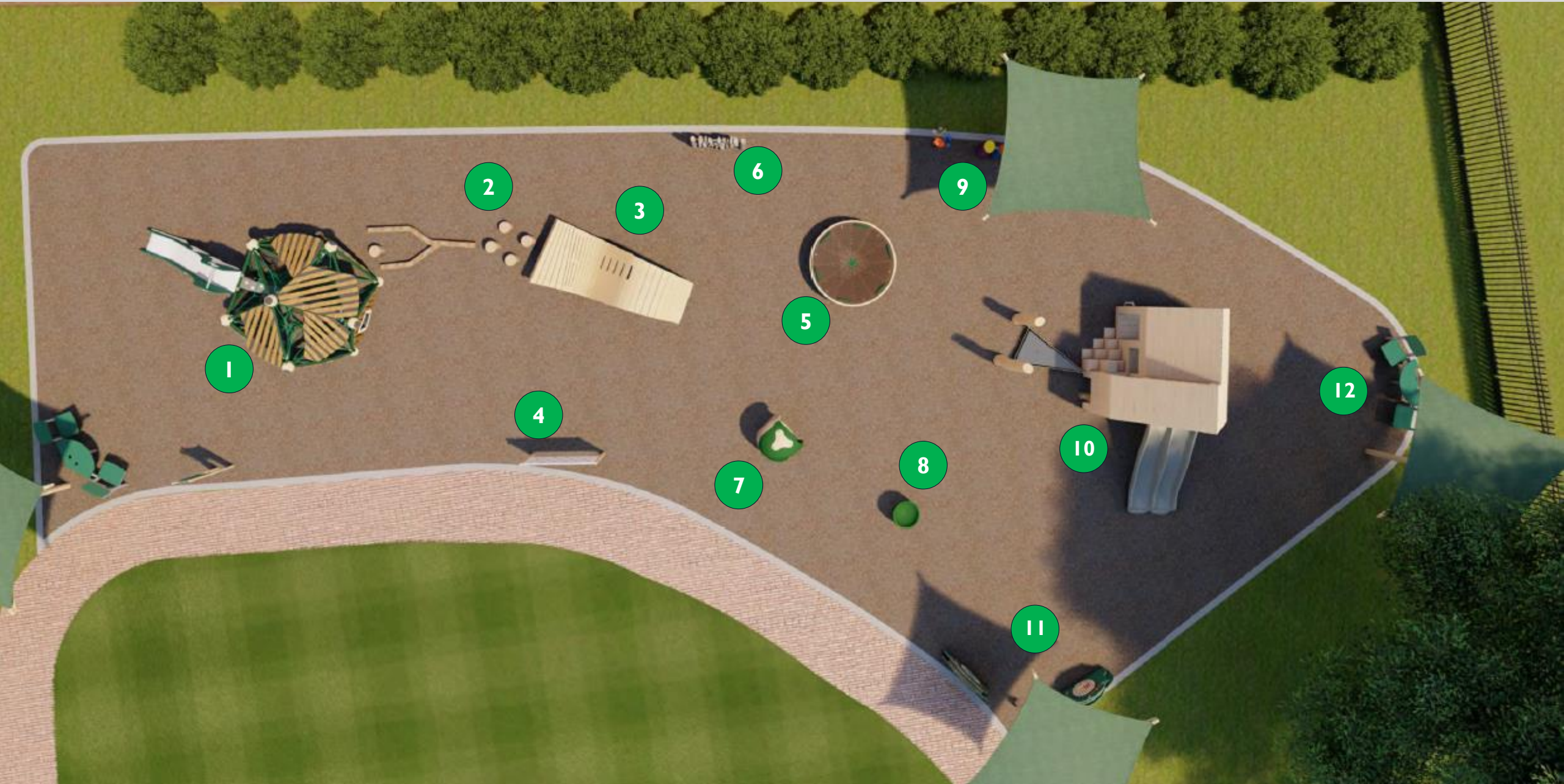
11
MOSAIC MURAL RETAINING WALL



11
INTERPRETIVE SIGNAGE

PLAYGROUND





OVERHEAD VIEW



PARK DESIGN



Low Impact
Development
Center

PLAYGROUND DESIGN

playground
Specialists Inc.

