

# Hyattsville Middle School Build.

Educational Facilities Task Force presentation to City Council  
February 1<sup>st</sup>, 2021



## Hyattsville Middle School





## Recap. How we got here.

- 1) There is currently a crisis of inadequate school infrastructure not just in Hyattsville but in much of Prince George's County, particularly North County.
- 2) Schools are overcrowded, dilapidated, and lacking in basic health and safety needs.
- 3) HMS currently lacks a working fire and evacuation system, lacks adequate heating and cooling systems, lacks ubiquitously working bathrooms and drinking fountains, and is infested with mold and rodents.
- 4) In an effort to alleviate these terrible conditions. Prince George's county has entering into an Alternative Construction Financing (ACF) package with a private partner to deliver 5 new Middle Schools and one pre-K facility.



## Recap. How we got here.

5) Hyattsville Middle School was identified as part of a larger effort to help alleviate overcrowding not only with the current population, but those of some of its feeder schools and sister schools as well. So it has been designed to serve a student body of roughly 1200 students. Mainly this is a community it should have been serving all along but didn't have the capacity.

6) While this committee did explore other public lands in the area that could possibly accommodate this build, it became quickly apparent that the only feasible option was to rebuild on the current site. This will require students to be bussed to two separate facilities during construction.

7) Because the current site is limited in size, a taller more urban style school was necessary to accommodate necessary programmatic needs and student population.

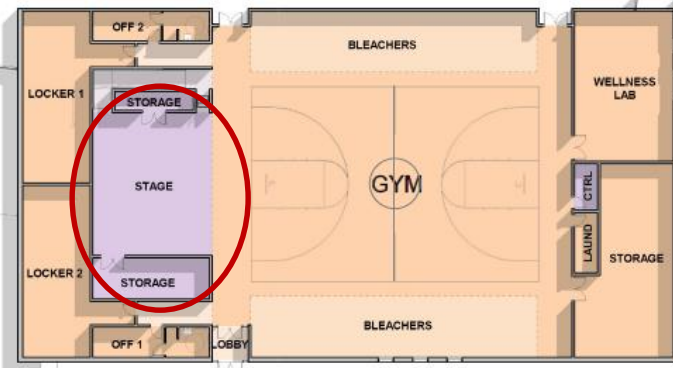
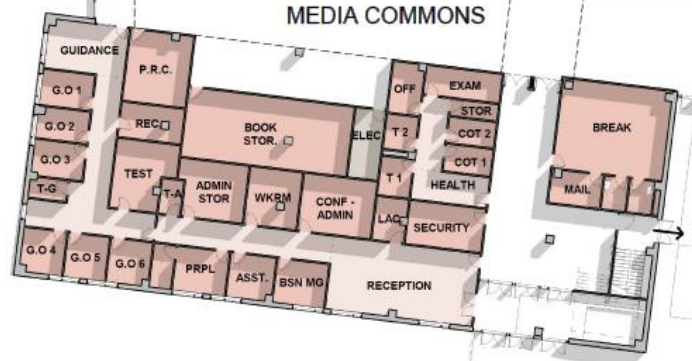
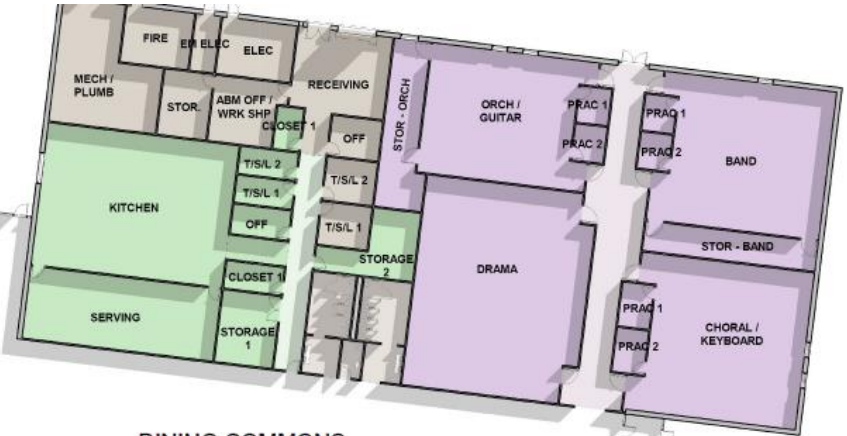
# Current Plans.



## Hyattsville Middle School



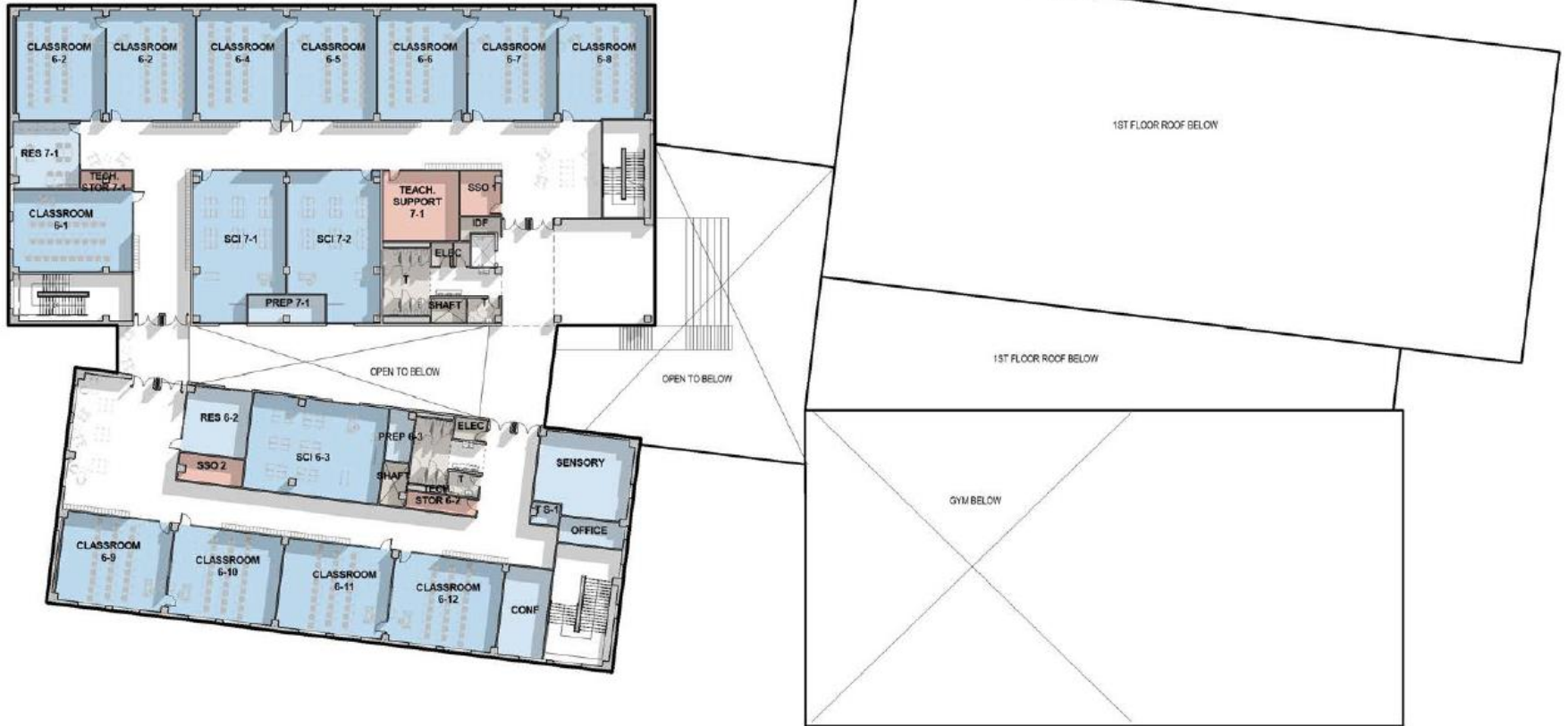
# Current Plans.



FIRST FLOOR

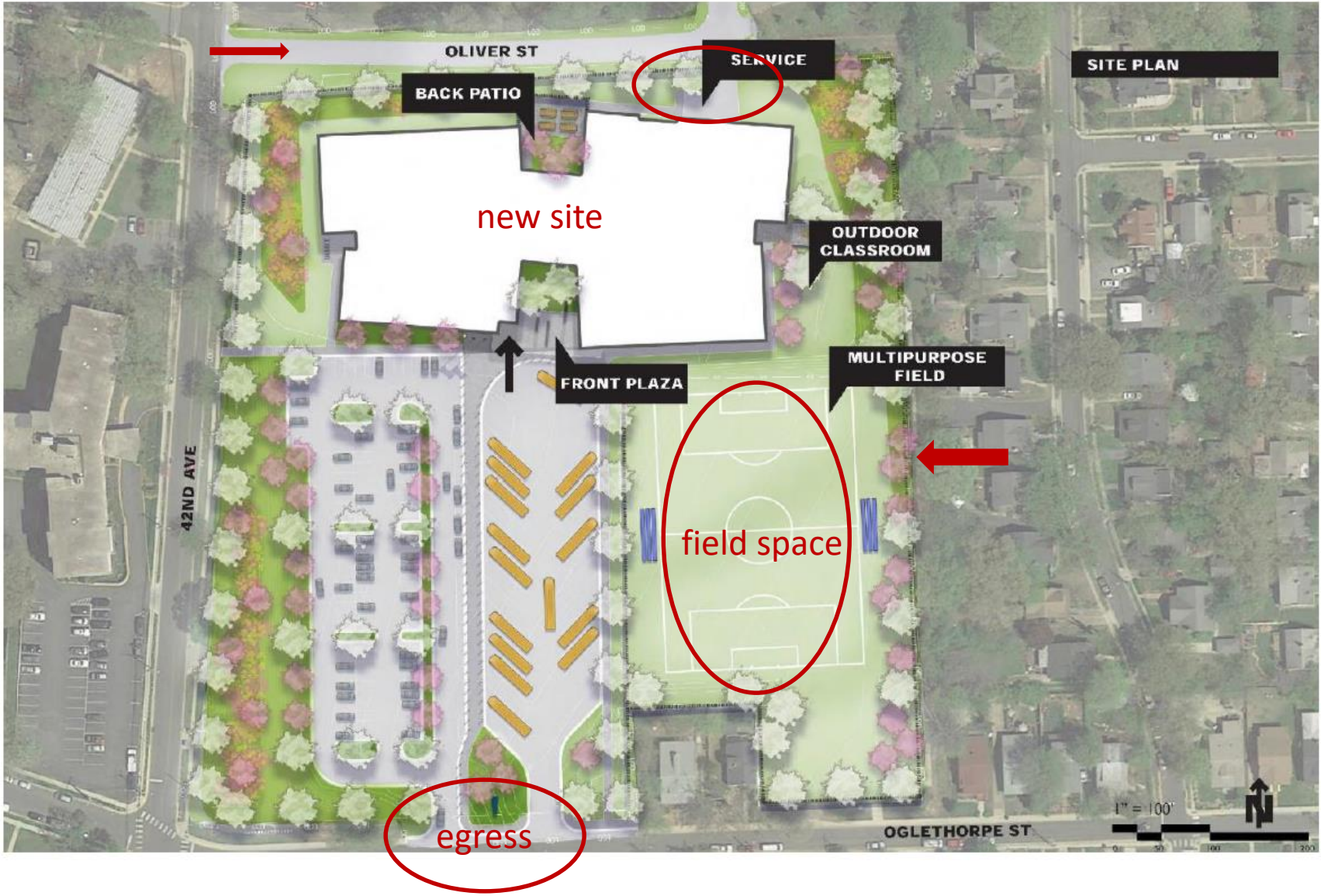
Stage/Gymnasium combo

# Current Plans.



**SECOND FLOOR**

# Current Plans.





## Issues to resolve.

- 1) **Egress.** There is concern that the current plan bottlenecks the drop-off and bus traffic at the same locations. We are working with the County to see if it's possible to move the drop-off traffic to a 42<sup>nd</sup> avenue location near the front of the school.
- 2) **Field Space.** Because of the limited space available, the field will not be able to accommodate baseball or softball and some other sports. It may be necessary for the city to collaborate with the county to ensure that after-school activities could be hosted in neighborhood park space.
- 3) **Service Entrance.** Neighbors have expressed a desire to make sure dumpsters are controlled and spaced in a manner as to not be a nuisance.





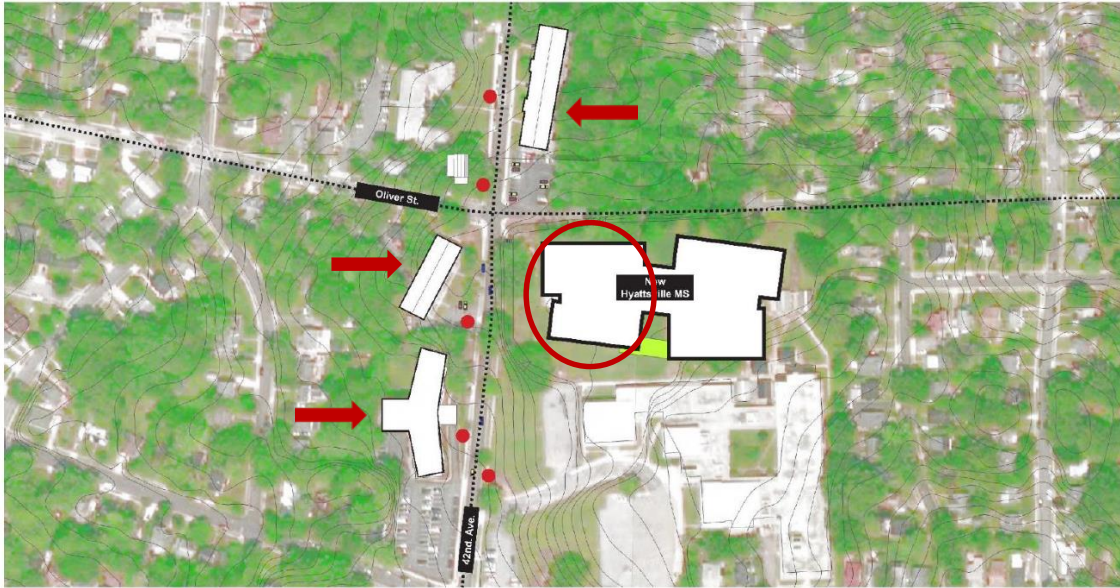
## Issues to resolve.

4) **Oliver Street.** Oliver will be widened from 42<sup>nd</sup> to 42<sup>nd</sup> Place to accommodate delivery and service vehicles. The necessary land will be taken from the school property. The alley will be maintained from 42<sup>nd</sup> Place to 43<sup>rd</sup> Avenue. The current restriction of East to West Traffic will be maintained. So while it is true that the road will be widened, it is not anticipated that traffic will increase significantly.

5) **Fencing.** Neighbors have expressed desire to make sure that the new privacy fencing is adequate and maintained throughout the build.

6) **The new position of the school.** Some immediate neighbors have taken issue with the new siting. Some are happy with it. While it's true that the use remains the same, there are shifting externalities.

# New Position of the School.





## **New Position of the School.**

There are a number of rationalizations for the current positioning:

- 1) Ease of build. Given the tight time frame for delivery, the proposed site best accommodates that schedule. Both building preparation and demolition can start at the same time.
- 2) Goes tall in the area furthest from single family homes. The area where the building goes tallest in the Northwest corner of the property is bordered by other multi-level establishments.
- 3) Uncovers many homes very close to the current middle school.
- 4) Provides significant buffers for those homes now closer to the structure.

While it is understandable that a project of this size will have its detractors, and their concerns should be heard to the fullest, it is difficult to imagine that the positioning of the building could or should be changed at this point.



## In Summation.

- 1) First, it is important to recognize that the building of this new middle school is a HUGE boon for the community. Thousands of children, who are currently schooling in completely unconscionable conditions, will have their lives significantly improved. And the community will benefit from the new available spaces as well.
- 2) Much of the design is well thought out has not been found objectionable to teachers, staff, or community.
- 3) The EFTF will continue working with the County in order to address those issues we can influence. Egress, stage space, etc.
- 4) We understand that the new position is objectionable to some. And will actively work with these residents to elevate and try to address some of their concerns. But it must be said that it is very unlikely and the positioning of the school on the property will change.

# Thank you so much for your time.

Educational Facilities Task Force presentation to City Council  
February 1<sup>st</sup>, 2021



## Hyattsville Middle School

