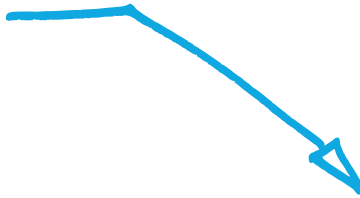


NOVEMBER 2023

Final Concept Designs



Redesign of The Spot in Hyattsville

NDC staff:

Allie O'Neill +
Jenny Smeltzer

the
Neighborhood
DesignCenter



PARTNERS:

**the
Neighborhood
DesignCenter**

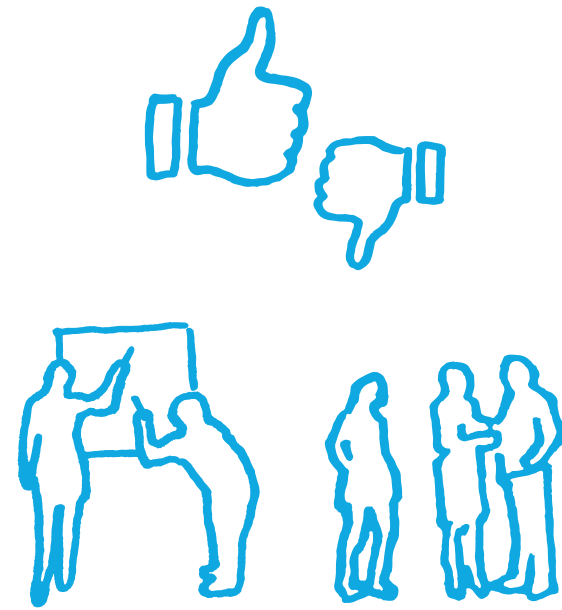


NDC STAFF:

Allie O'Neill
Jenny Smeltzer

FUNDING:

Funded through City
of Hyattsville



Design Principles

- Design a space that is inclusive and welcoming for all
- Address the site challenges of full sun exposure and a current lack of shade
- Design to engage all the senses
- Design for balanced, multi-modal access
- Engage local artists & businesses in implementation and ongoing programming



What We Heard

- ① Shade is a highly desirable element to incorporate according to respondents. Preference for shelter from rain was requested.
- ② More seating is requested in many forms--shaded, in conjunction with tables, lounging seating, movable and permanent, adaptive for differing abilities and bodies.
- ③ Programming at The Spot is essential. Many comments included the assumptions of events and programming.
- ④ Restrooms were mentioned with mentions of location, maintenance, size, and access.
- ⑤ Respondents noted that native plants, pollinator plants/gardens, and lushly planted areas make an attractive park environment.
- ⑥ Interest in play, such as play structures, game areas, and activity features for children were preferred for a park at The Spot.
- ⑦ Bike facilities are important to respondents (access, parking, fix-it area, safety for bicyclists and in interactions with pedestrians, and clear definitions of spaces).
- ⑧ Parking is equally desired and disliked adjacent to The Spot.
- ⑨ Dining options were commonly mentioned among respondents, from envisioning food trucks on-site to spaces to eat.
- ⑩ Safe, secure, and adaptive access to The Spot and when considering programming that happens at The Spot were critical elements.

“What We Heard” came from public engagement through Hello Hyattsville, where 146 community members responded to a concept design for The Spot and provided direction and specifics about preferences in park design and elements.

PARTNERS:

the
Neighborhood
DesignCenter



NDC STAFF:

Allie O'Neill
Jenny Smeltzer

FUNDING:

Funded through City
of Hyattsville

Inspiration

Gathering Spaces



Outdoor seating. Beltline, Atlanta, Georgia



Friends in the park



Garden park



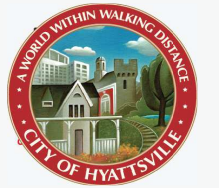
Clark Park, Philadelphia, PA

PROJECT NO: 3879

The Spot Park Redesign Concept Plan NOVEMBER, 2023

PARTNERS:

the
Neighborhood
DesignCenter



NDC STAFF:

Allie O'Neill
Jenny Smeltzer

FUNDING:

Funded through City
of Hyattsville

For conceptual purposes only. Not for regulatory approval, permitting, or construction. NDC and its volunteers assume no responsibility or liability for its technical accuracy nor for any unauthorized use.

Inspiration

Programming



Poetry slam in the park. City of Malibu, California



Credit: Vortex Aquatic Structures International



Yoga in the park, Lincoln Park Zoo, Chicago



Credit: PlumbingSupply.com

PROJECT NO: 3879

The Spot Park Redesign Concept Plan NOVEMBER, 2023

PARTNERS:

the
Neighborhood
DesignCenter



NDC STAFF:

Allie O'Neill

Jenny Smeltzer

FUNDING:

Funded through City
of Hyattsville

For conceptual purposes only. Not for regulatory approval, permitting, or construction. NDC and its volunteers assume no responsibility or liability for its technical accuracy nor for any unauthorized use.

Inspiration

Inviting & Welcoming Park



Dynamic lighting creates a fun and safe outdoor nighttime environment



Parklet by MKSK. Shaker Heights, OH



Kids at play



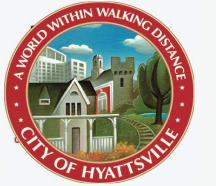
Bench seating under a shade tree

PROJECT NO: 3879

The Spot Park Redesign Concept Plan NOVEMBER, 2023

PARTNERS:

the
Neighborhood
DesignCenter



NDC STAFF:

Allie O'Neill
Jenny Smeltzer

FUNDING:

Funded through City
of Hyattsville

For conceptual purposes only. Not for regulatory approval, permitting, or construction. NDC and its volunteers assume no responsibility or liability for its technical accuracy nor for any unauthorized use.

Inspiration

Native Plants, Shade, Lush Vegetation



Canal Park planting and comfortable, shady seating. Credit: Olin Studio.



Hyatt Park



Lush landscape planting.



Boulders and rock garden planting. Credit: J&S Landscape, Longmont, Colorado

PROJECT NO: 3879

The Spot Park Redesign Concept Plan NOVEMBER, 2023

PARTNERS:

the
Neighborhood
DesignCenter



NDC STAFF:

Allie O'Neill

Jenny Smeltzer

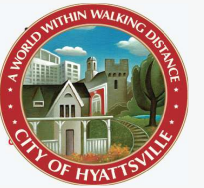
FUNDING:

Funded through City
of Hyattsville

For conceptual purposes only. Not for regulatory approval, permitting, or construction. NDC and its volunteers assume no responsibility or liability for its technical accuracy nor for any unauthorized use.

PARTNERS:

**the
Neighborhood
DesignCenter**



NDC STAFF:

Allie O'Neill
Jenny Smeltzer

FUNDING:

Funded through City
of Hyattsville

Community Vision

The Spot is an oasis in the City where families, friends, and individuals bump into neighbors and meet new people. The Hyattsville community gathers at The Spot for concerts and events or to enjoy an ice cream cone on a summer night. Through its design and programming, The Spot supports local businesses and welcomes residents of all ages and backgrounds.

Community Priorities



GATHERING SPACES

- Areas for small & large groups
- Comfortable gathering spaces - shade & sun both
- Picnic areas
- Informal activity spaces
- Seating for events
- Unique spaces to provide variety & buffer between groups/individuals



PROGRAMMING

- Events - music, theater, fitness, festivals, food trucks or farmers markets
- Informal Activity Spaces



INVITING & WELCOMING PARK

- Lunch spot
- Attractive stopover
- Programming for all ages and backgrounds
- Attractive lighting



NATIVE PLANTS, SHADE, LUSH VEGETATION

- Shade trees
- Native plants
- Planting that supports pollinators & birds
- Lush landscaping



TRAIL ACCOMMODATIONS

- Restrooms
- Water refills (near existing water valve)
- Rest and bike fix options



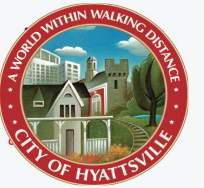
SAFETY & ACCESSIBILITY

- Safe & clear path for cyclists and pedestrians
- Clearly marked & physically separate drive aisles
- New clearly marked metered city parking with four ADA spaces

Community Vision and Priorities were developed through community engagement at Trolley Trail Day, where community members gave input on park meaning and preferences, with emphasis on The Spot.

PARTNERS:

the
**Neighborhood
DesignCenter**



NDC STAFF:

Allie O'Neill
Jenny Smeltzer

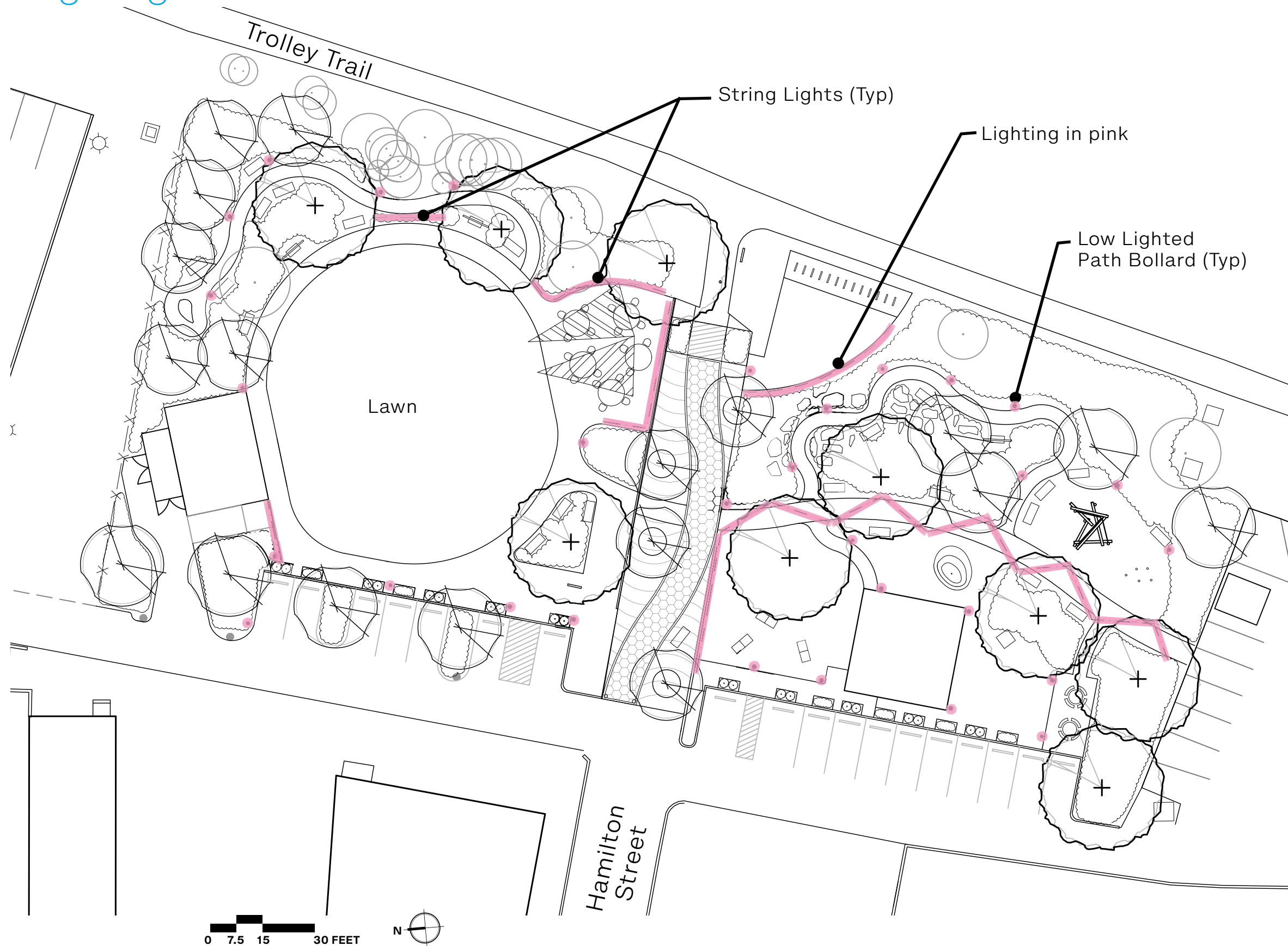
FUNDING:

Funded through City
of Hyattsville



For conceptual purposes only. Not for regulatory approval, permitting, or construction. NDC and its volunteers assume no responsibility or liability for its technical accuracy nor for any unauthorized use.

Lighting Locations



PROJECT NO: 3879

The Spot Park Redesign Concept Plan NOVEMBER, 2023

PARTNERS:

the
Neighborhood
DesignCenter



NDC STAFF:

Allie O'Neill
Jenny Smeltzer

FUNDING:

Funded through City
of Hyattsville

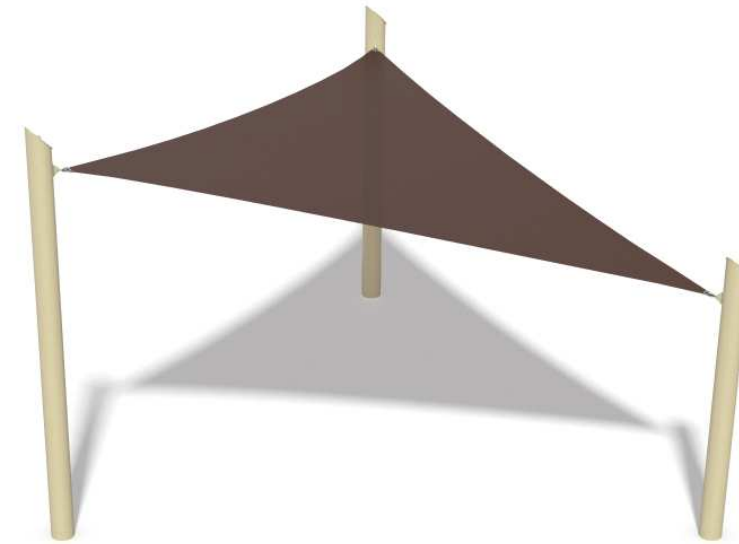
For conceptual purposes only. Not for regulatory approval, permitting, or construction. NDC and its volunteers assume no responsibility or liability for its technical accuracy nor for any unauthorized use.

Furnishings & Elements

Shelter, Stage, Storage



Gullwing Shelter for Covered Stage and Park Pavilion by Poligon



SkyWays Triangle Shade Sail for Bistro Table Seating Area



Storage Container with Side Door - 20' - Conexwest or equal.
Opportunity for public art.

PROJECT NO: 3879

**The Spot Park
Redesign
Concept Plan**
NOVEMBER, 2023

PARTNERS:

the
Neighborhood
DesignCenter



NDC STAFF:

Allie O'Neill

Jenny Smeltzer

FUNDING:

Funded through City
of Hyattsville

For conceptual purposes only. Not for regulatory approval, permitting, or construction. NDC and its volunteers assume no responsibility or liability for its technical accuracy nor for any unauthorized use.

Furnishings & Elements

Seating



6' Terraza Bench from Paris - Signal Blue - scattered through site



Expanded Steel Chair and 46" Patio Table in Light Blue from MyTCoat - for Bistro Table Seating Area



Movable seating in lawn - Folding Patio Lounge Chair from Costway or equal



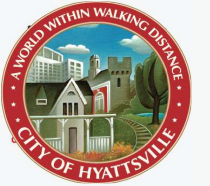
Glider Swing - 4' Contoured Swing Bench with Arm by MyTCoat - Light Blue



8' Traditional Picnic Table by Paris - Signal Blue - for Park Pavilion

PARTNERS:

the
Neighborhood
DesignCenter



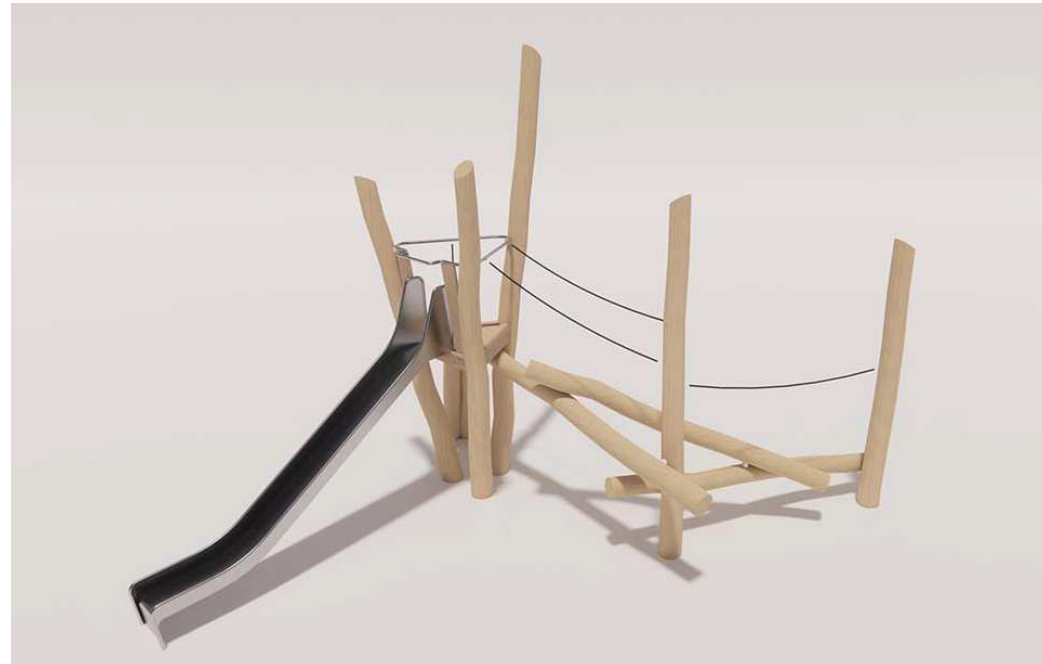
NDC STAFF:

Allie O'Neill
Jenny Smeltzer

FUNDING:

Funded through City
of Hyattsville

Furnishings & Elements
 Play & Comfort



Timber Play Structure - Slide Platform 1800 by Earthscape



Little Library for games and books from Little Free Library or equal



Misters - Glomist Misters by Vortex Aquatic Structures



46" Game Table by Paris - Signal Blue

PARTNERS:

the
 Neighborhood
 DesignCenter



NDC STAFF:

Allie O'Neill
 Jenny Smeltzer

FUNDING:

Funded through City
 of Hyattsville

For conceptual purposes only. Not for regulatory approval, permitting, or construction. NDC and its volunteers assume no responsibility or liability for its technical accuracy nor for any unauthorized use.

Furnishings & Elements

Planters, Lighting



Large Decorative Planter - Shrubtub by Streetlife for Art Path - Blue tone from RAL chart



String Lights example from Hyatt Park



Mosaic Finish Planter - concrete - Dawn Industries or equal. Mosaic finish separate.

PROJECT NO: 3879

The Spot Park Redesign Concept Plan NOVEMBER, 2023

PARTNERS:

the
Neighborhood
DesignCenter



NDC STAFF:

Allie O'Neill

Jenny Smeltzer

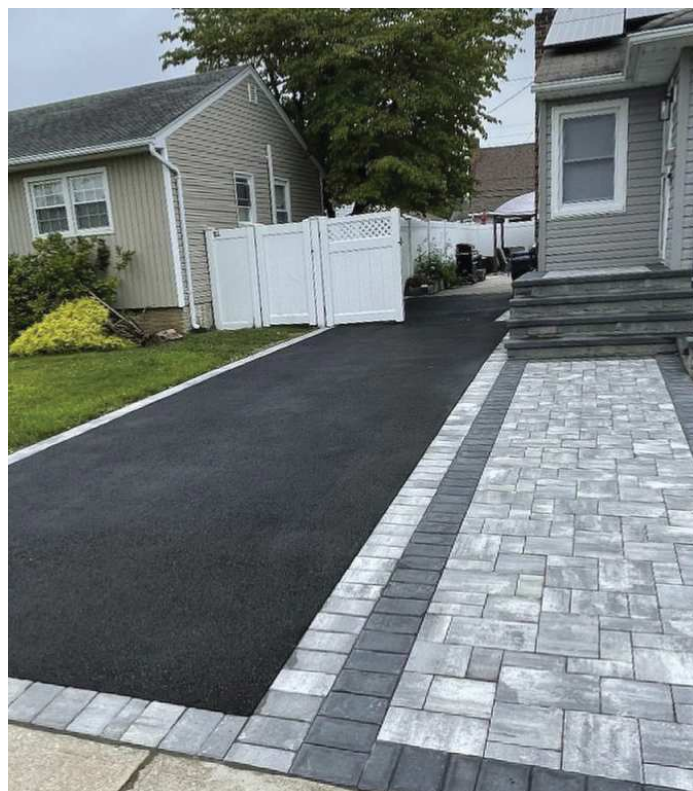
FUNDING:

Funded through City
of Hyattsville

For conceptual purposes only. Not for regulatory approval, permitting, or construction. NDC and its volunteers assume no responsibility or liability for its technical accuracy nor for any unauthorized use.

Furnishings & Elements

Multi-use Path Detail - Paving



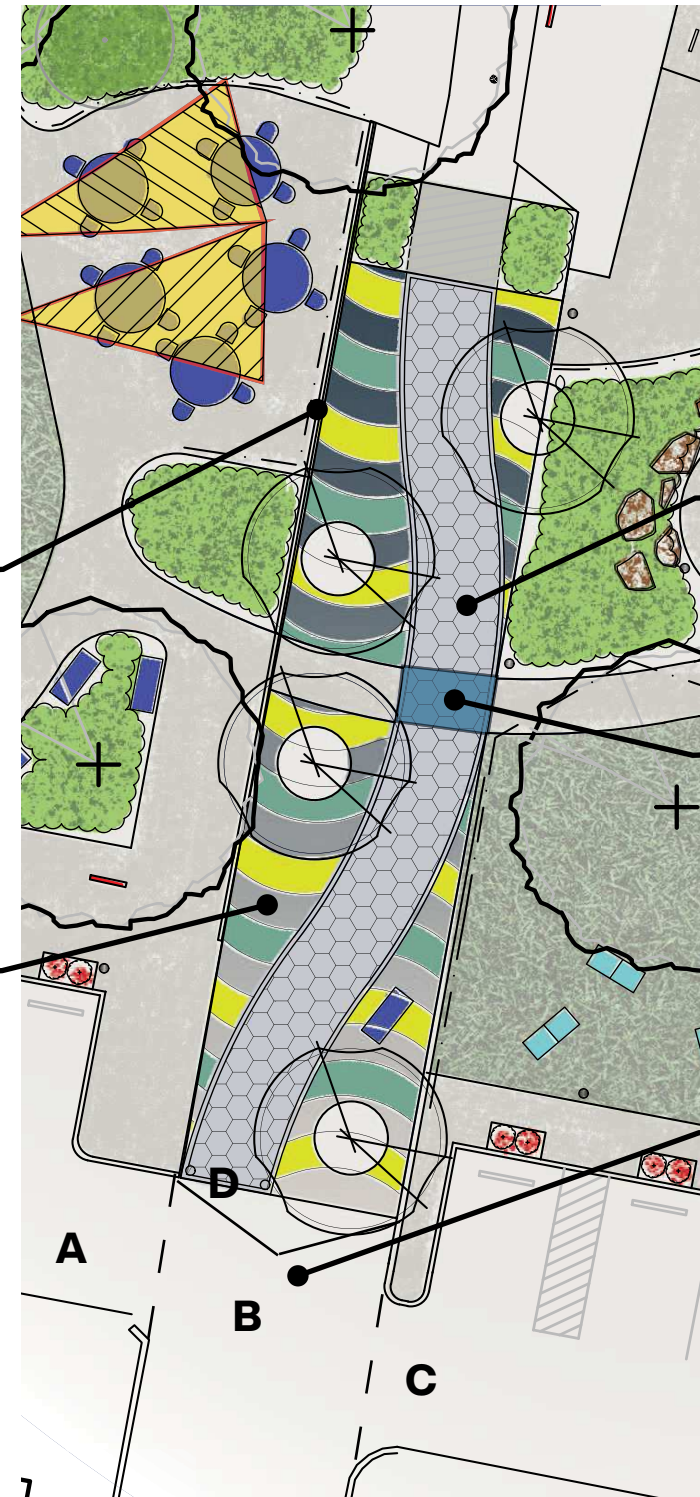
Multi-use Path examples - mixed asphalt and paver



Multi-use Path paver - Endura Hex by Unilock, Granite Blend

Curbs both sides of Hamilton Street to be refurbished/replaced as necessary to provide continuous grade and edging support for asphalt pavement .

Painted asphalt, colors and patterns TBD



Art Path Detail

10' wide path - pavers, hexagonal shape

Paint pavers at pedestrian/bicycle intersection to indicate caution, color TBD

Verify A, B, & C elevations against survey. Ensure smooth grade transitions, ADA if possible. D to be ADA accessible; ramp the transition to D as necessary.

PARTNERS:

the Neighborhood DesignCenter



NDC STAFF:

Allie O'Neill
Jenny Smeltzer

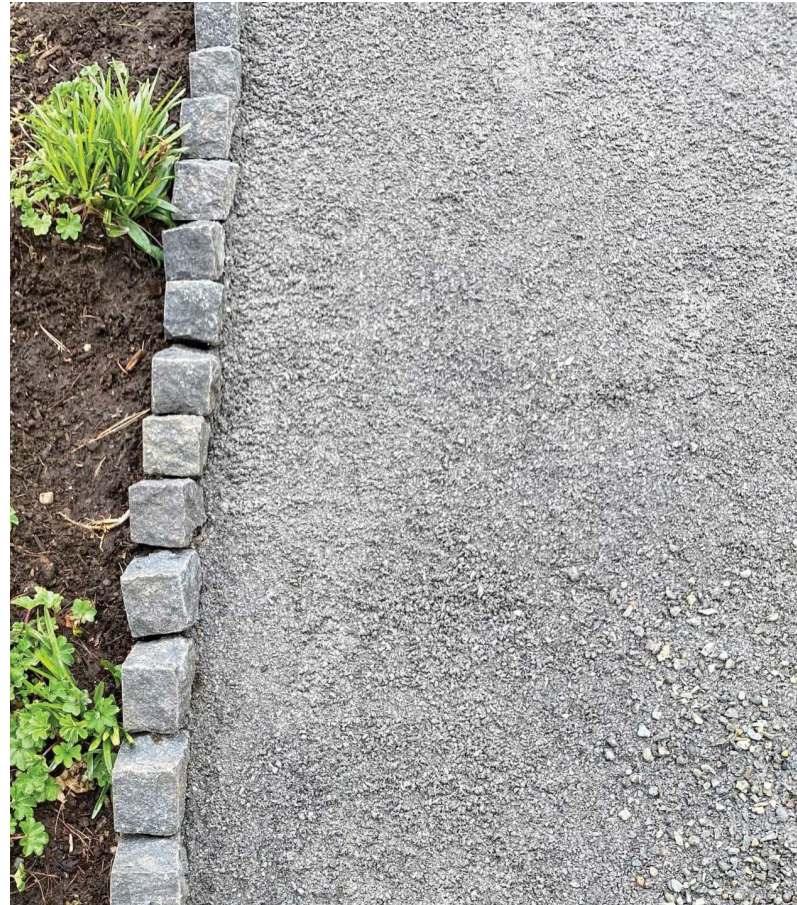
FUNDING:

Funded through City of Hyattsville

For conceptual purposes only. Not for regulatory approval, permitting, or construction. NDC and its volunteers assume no responsibility or liability for its technical accuracy nor for any unauthorized use.

Furnishings & Elements

Path Paving Materials



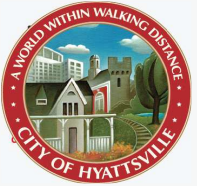
Stone Dust Path at Strolling Garden and Rock Garden - example only, edging not included



Holland Premier Steel Mountain Pavers for path paving excluding Strolling Garden, Rock Garden, and Art Path (both paving and asphalt sections)

PARTNERS:

the
Neighborhood
DesignCenter



NDC STAFF:

Allie O'Neill
Jenny Smeltzer

FUNDING:

Funded through City
of Hyattsville

For conceptual purposes only. Not for regulatory approval, permitting, or construction. NDC and its volunteers assume no responsibility or liability for its technical accuracy nor for any unauthorized use.

Plant Palette

TREES & SHRUBS



Bald Cypress
Taxodium distichum Sp Su Fa Wi
Resilient tree with shredded bark that provides significant summer shade and tolerates poor soils.



Hackberry
Celtis occidentalis Sp Su Fa Wi
Resilient tree with yellow-gold fall color that tolerates poor soils and does not block winter sun.



River Birch
Betula nigra Sp Su Fa Wi
Resilient tree with exfoliating bark that remains visually interesting in the winter months.



Eastern Redbud
Cercis canadensis Sp Su Fa Wi
Small, ornamental tree. Pink flowers in early spring.



Little Gem Magnolia
Magnolia grandiflora Sp Su Fa Wi
Broadleaf evergreen tree. Fragrant white flowers bloom in summer.



Witch Hazel
Hammamelis virginiana Sp Su Fa Wi
Multi-stemmed, small tree or shrub. Showy yellow flowers in spring and bright yellow leaves in fall.



Gro-Low Fragrant Sumac
Rhus aromatica Sp Su Fa Wi
Deciduous low shrub. This plant masses well and provides showy red foliage in the fall. Sumac are also beneficial for erosion control.



Inkberry Holly
Ilex glabra Sp Su Fa Wi
Evergreen shrub. Black berry-like drupes mature in early fall and persist through winter.



Sweet Fern
Comptonia peregrina Sp Su Fa Wi
Aromatic upright deciduous shrub. Leaves have fern-like appearance and may persist into winter.



New Jersey Tea
Ceanothus americana Sp Su Fa Wi
Small mounding shrub with white flowers and glossy leaves. ornamental grass with a striking teal color that eventually turns to a red-purple in the fall.



Low Bush Blueberry
Vaccinium angustifolium Sp Su Fa Wi
Eye-catching groundcover shrub in fall. Edible berries.

Bloom & Foliage Key

Sp Su Fa Wi

Sp = spring flowers or leaves
Su = summer flowers or fruit
Fa = fall leaves or fruit
Wi = winter interest or fruit

GRASSES



Northern Sea Oats
Chasmanthium latifolium

Sp Su Fa Wi

Perennial grass with interesting seedheads, persisting into the cold season. Low maintenance.



Little Bluestem
Schizachyrium scoparium

Sp Su Fa Wi

Shorter ornamental grass with a striking teal color that eventually turns to a red-purple in the fall.



Pink Muhly
Muhlenbergia capillaris

Sp Su Fa Wi

Eye-catching ornamental grass with a firework-like mounding form.



Pennsylvania Sedge
Carex pensylvanica

Sp Su Fa Wi

Short ornamental grass that works in as shade groundcover.

PERENNIALS



Black-Eyed Susan
Rudbeckia hirta

Sp Su Fa Wi

Clumping perennial with bright flowers. This is a favorite amongst pollinators.



New England Aster
Symphyotrichum novae-angliae

Sp Su Fa Wi

Prolific flower producing perennial that blooms purple in the fall season.



Coral Bells
Heuchera americana

Sp Su Fa Wi

Clumping perennial with spear-like flowers blooming late spring to summer. Foliage colors from maroon to yellow.



False Indigo
Baptisia australis

Sp Su Fa Wi

A large, spiky purple-flowering perennial good for creating prominent masses or for specimen planting.



Milkweed
Asclepias syriaca

Sp Su Fa Wi

Bushy perennial that is particularly beneficial for pollinators.



Blue Star
Amsonia hubrichtii

Sp Su Fa Wi

A mounding perennial with threadlike foliage that yellows in the fall and continues to provide a color pop during the winter.



Blazing star
Liatris spicata

Sp Su Fa Wi

Whimsical, flowering plant good for vertical structure in planting beds. It is also attractive to pollinators of all size.

Bloom & Foliage Key

Sp Su Fa Wi

Sp = spring flowers or leaves
Su = summer flowers or fruit
Fa = fall leaves or fruit
Wi = winter interest or fruit

PERENNIALS



Purple Coneflower
Echinacea Purpurea

Sp Su Fa Wi

A showy perennial with large pink-purple flowers and an upright growing habit.



Blueflag Iris
Iris virginica

Sp Su Fa Wi

Native bulb great for rain gardens. Bright purple flowers in early spring.



Golden Ragwort
Packera aurea

Sp Su Fa Wi

Hardy perennial that grows in sun or shade.



Beardtongue
Penstemon Strictus

Sp Su Fa Wi

This fragrant perennial grows in flowering spikes. It is particularly attractive to butterflies and other beneficial insects.



Wild Bergamot
Monarda fistulosa

Sp Su Fa Wi

Clumping perennial with bright flowers. This is a favorite among pollinators.



Threadleaf Coreopsis Tickseed
Coreopsis verticillata

Sp Su Fa Wi

Fine-leaved perennial that grows in bunches with small yellow flowers that cover the plant.



White Wood Aster
Eurybia divaricata

Sp Su Fa Wi

Adaptable groundcover with white daisy-like flowers, attractive to wildlife and vigorous growth pattern.



Wild Geranium
Geranium maculatum

Sp Su Fa Wi

Groundcover with lobed leaves and lavender flowers. Good for shade and spreads by rhizome.



Woodland Stonecrop
Sedum ternatum

Sp Su Fa Wi

Succulent low groundcover with white flowers in late spring and early summer. Likes shade and spreads.



Marginal Woodfern
Dryopteris marginalis

Sp Su Fa Wi

Evergreen groundcover fern with drought tolerance, good for shade and part shade.

Bloom & Foliage Key

Sp Su Fa Wi

Sp = spring flowers or leaves

Su = summer flowers or fruit

Fa = fall leaves or fruit

Wi = winter interest or fruit